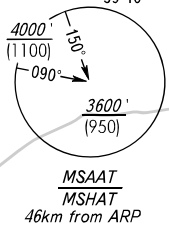


GORDY APPROACH	125.250
GORDY RADAR	125.250
DOMODEDOVO RADAR	125.300 129.800 134.675
MOSCOW APPROACH	127.700 132.050
	127.200 128.000 131.200 134.000

PZ - 90.11 coordinates

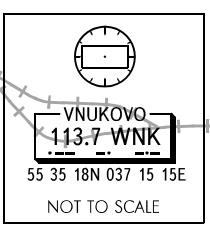


MSAAT/MSHAT is computed for surface air temperature at the aerodrome -39° C.

OLOPI 2W, TENRI 2W

RNAV 1

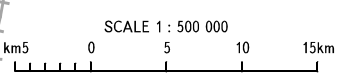
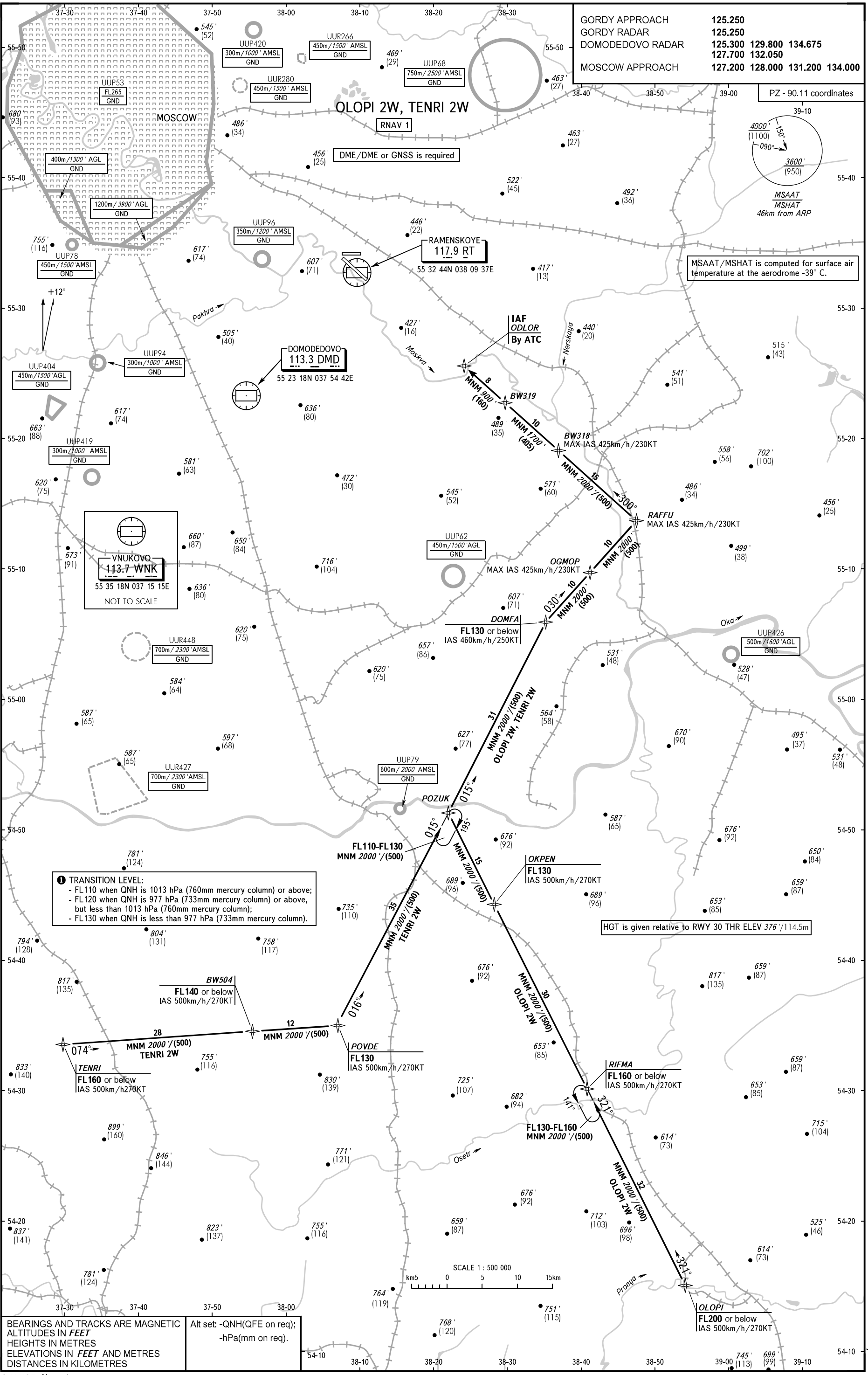
DME/DME or GNSS is required



1 TRANSITION LEVEL:
 - FL 110 when QNH is 1013 hPa (760mm mercury column) or above;
 - FL 120 when QNH is 977 hPa (733mm mercury column) or above, but less than 1013 hPa (760mm mercury column);
 - FL 130 when QNH is less than 977 hPa (733mm mercury column).

HGT is given relative to RWY 30 THR ELEV 376'/114.5m

TRANSITION LEVEL: By ATC



BEARINGS AND TRACKS ARE MAGNETIC
 ALTITUDES IN FEET
 HEIGHTS IN METRES
 ELEVATIONS IN FEET AND METRES
 DISTANCES IN KILOMETRES

Alt set: -QNH(QFE on req);
 -hPa(mm on req).