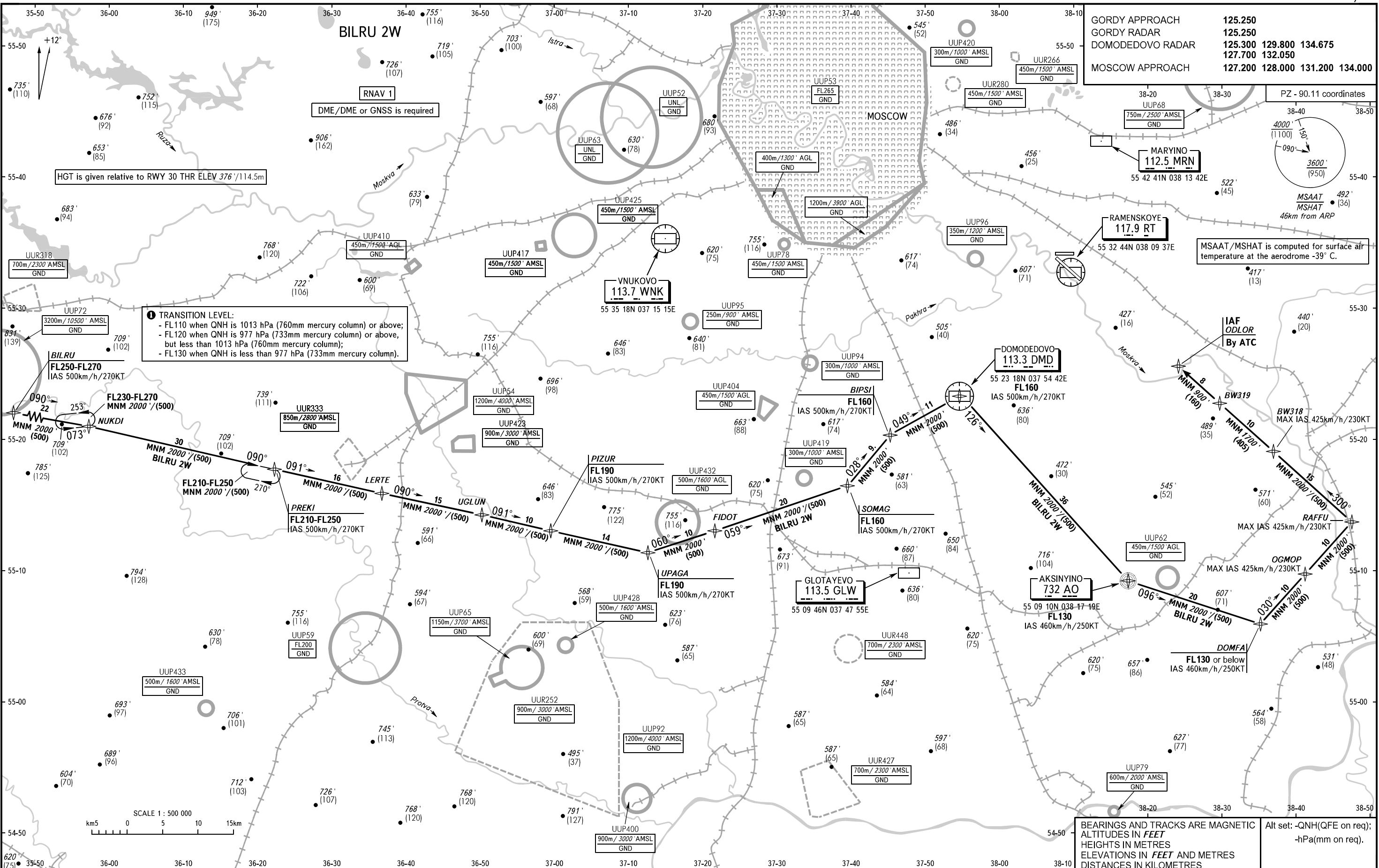


STANDARD ARRIVAL CHART
INSTRUMENT (STAR) - ICAO

RAMENSKOYE, RUSSIA
RAMENSKOYE
RNAV RWY 12/30

TRANSITION
LEVEL: By ATC ①

GORDY APPROACH	125.250
GORDY RADAR	125.250
DOMODEDOVO RADAR	125.300 129.800 134.675
MOSCOW APPROACH	127.700 132.050
MOSCOW APPROACH	127.200 128.000 131.200 134.000



① TRANSITION LEVEL:
 - FL110 when QNH is 1013 hPa (760mm mercury column) or above;
 - FL120 when QNH is 977 hPa (733mm mercury column);
 - FL130 when QNH is less than 977 hPa (733mm mercury column).

PZ - 90.11 coordinates
 4000' (1100)
 150'
 090°
 3600' (950)
 MSAAT/MSHAT is computed for surface air temperature at the aerodrome -39° C.

BEARINGS AND TRACKS ARE MAGNETIC
 ALTITUDES IN FEET
 HEIGHTS IN METRES
 ELEVATIONS IN FEET AND METRES
 DISTANCES IN KILOMETRES

Alt set: -QNH(QFE on req);
 -hPa(mm on req).