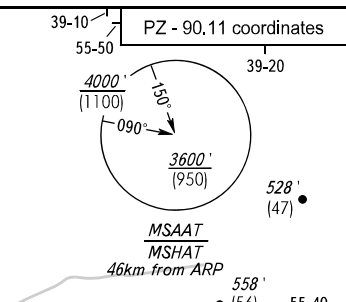
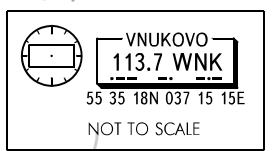


STANDARD DEPARTURE CHART
INSTRUMENT (SID) - ICAO
TRANSITION ALT.: 10000'
TRANSITION HGT.: (2935)

GORDY APPROACH	125.250
GORDY RADAR	125.250
VNUKOVO RADAR	123.400 135.900
DOMODEDOVO RADAR	119.400 125.300 129.800
SHEREMETYEVO RADAR	118.100 122.700
MOSCOW APPROACH	118.550 118.950 124.200 127.200
	130.375 128.000 131.200 134.000



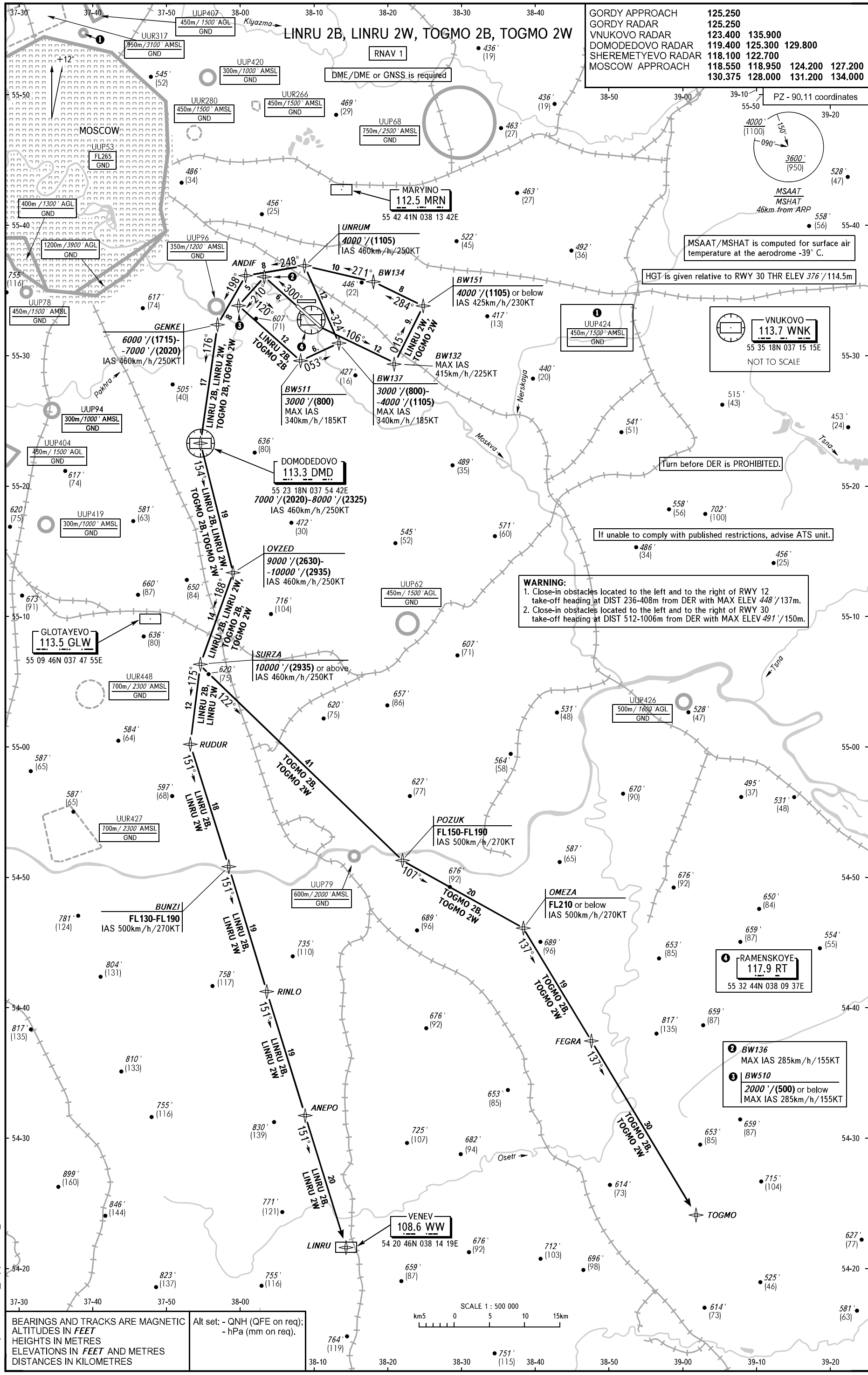
HGT is given relative to RWY 30 THR ELEV 376'/114.5m



Turn before DER is PROHIBITED.

If unable to comply with published restrictions, advise ATS unit.

WARNING:
1. Close-in obstacles located to the left and to the right of RWY 12 take-off heading at DIST 236-408m from DER with MAX ELEV 448'/137m.
2. Close-in obstacles located to the left and to the right of RWY 30 take-off heading at DIST 512-1006m from DER with MAX ELEV 491'/150m.



BEARINGS AND TRACKS ARE MAGNETIC
ALTITUDES IN FEET
HEIGHTS IN METRES
ELEVATIONS IN FEET AND METRES
DISTANCES IN KILOMETRES

Alt set: - QNH (QFE on req);
- hPa (mm on req).

CHANGE: New chart

RAMENSKOYE, RUSSIA
RAMENSKOYE
RNAV RWY 12/30