

GORDY APPROACH	125.250
GORDY RADAR	125.250
VNUKOVO RADAR	123.400 135.900
DOMODEDOVO RADAR	119.400 125.300 129.800
SHEREMETYEVO RADAR	118.100 122.700
MOSCOW APPROACH	118.550 118.950 124.200 127.200
	130.375 128.000 131.200 134.000

KOGOM 2B, KOGOM 2W, OLMUN 2B, OLMUN 2W, RILPO 2B, RILPO 2W

RNAV 1
DME/DME or GNSS is required
If unable to comply with published restrictions, advise ATS unit.

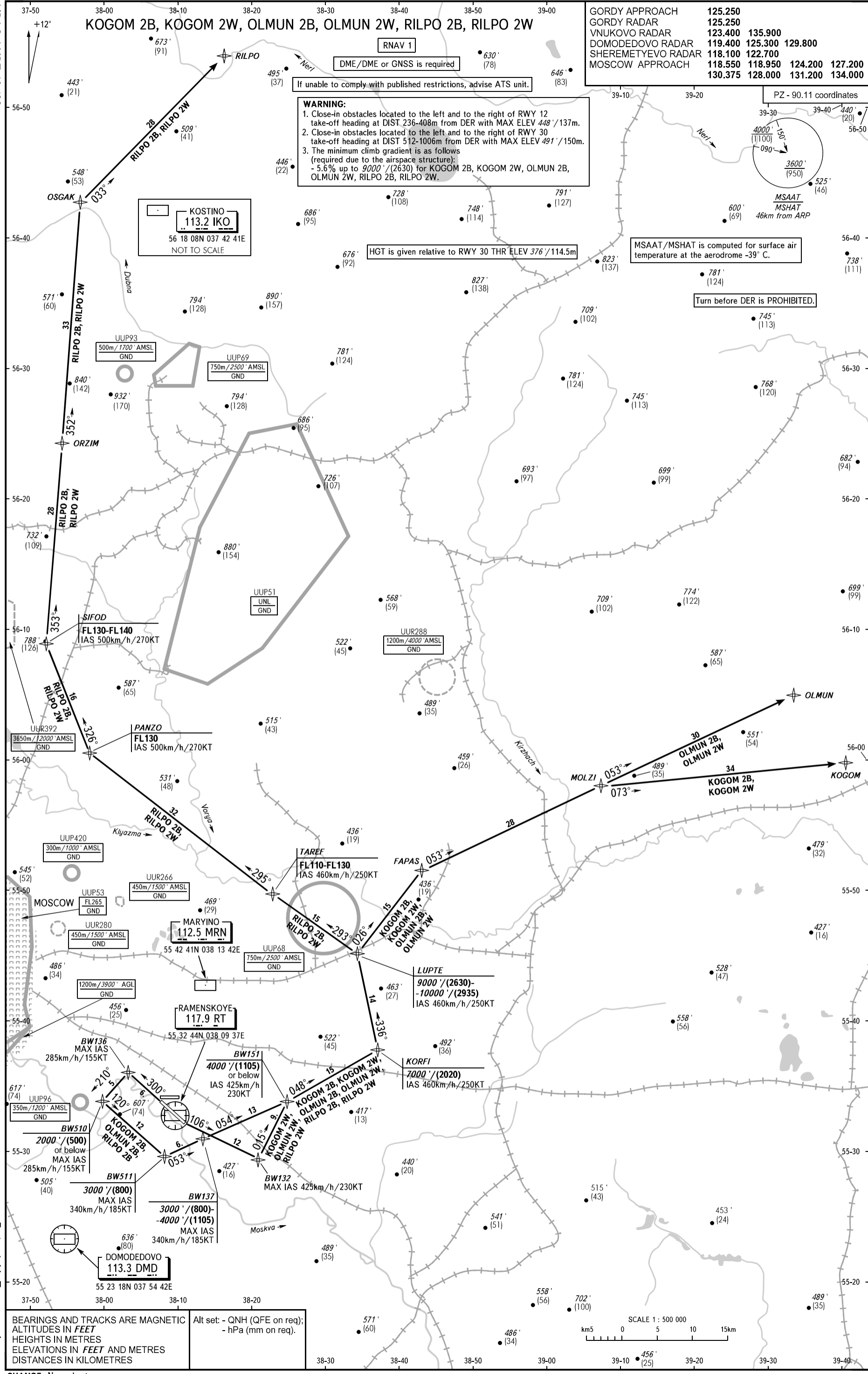
WARNING:
1. Close-in obstacles located to the left and to the right of RWY 12 take-off heading at DIST 236-408m from DER with MAX ELEV 448' /137m.
2. Close-in obstacles located to the left and to the right of RWY 30 take-off heading at DIST 512-1006m from DER with MAX ELEV 491' /150m.
3. The minimum climb gradient is as follows (required due to the airspace structure):
- 5.6% up to 9000' / (2630) for KOGOM 2B, KOGOM 2W, OLMUN 2B, OLMUN 2W, RILPO 2B, RILPO 2W.

HGT is given relative to RWY 30 THR ELEV 376' /114.5m

MSAAT/MSHAT is computed for surface air temperature at the aerodrome -39° C.

Turn before DER is PROHIBITED.

KOSTINO
113.2 IKO
56 18 08N 037 42 41E
NOT TO SCALE



BEARINGS AND TRACKS ARE MAGNETIC
ALTITUDES IN FEET
HEIGHTS IN METRES
ELEVATIONS IN FEET AND METRES
DISTANCES IN KILOMETRES

Alt set: - QNH (QFE on req);
- hPa (mm on req).

