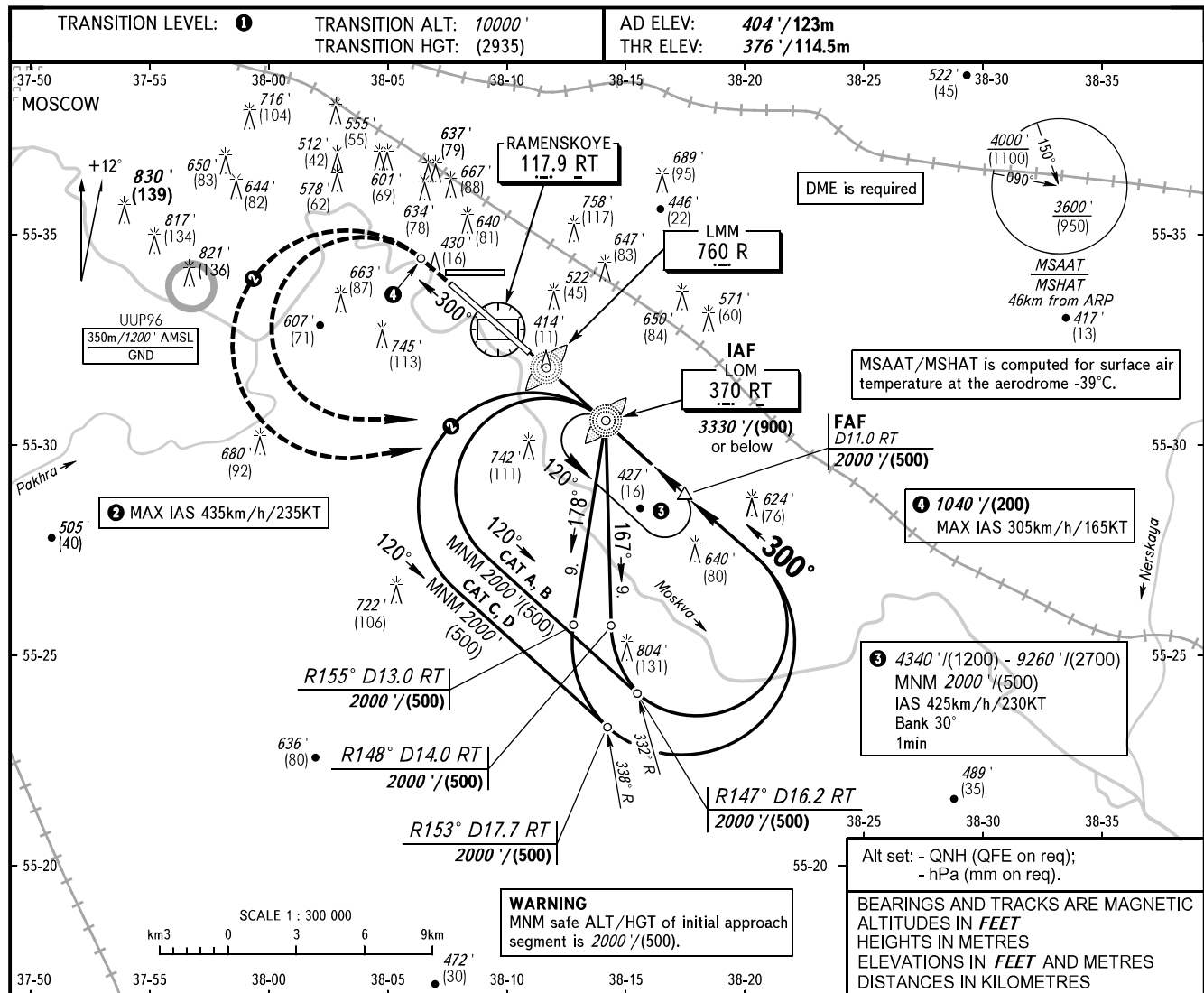


**INSTRUMENT
APPROACH
CHART - ICAO**

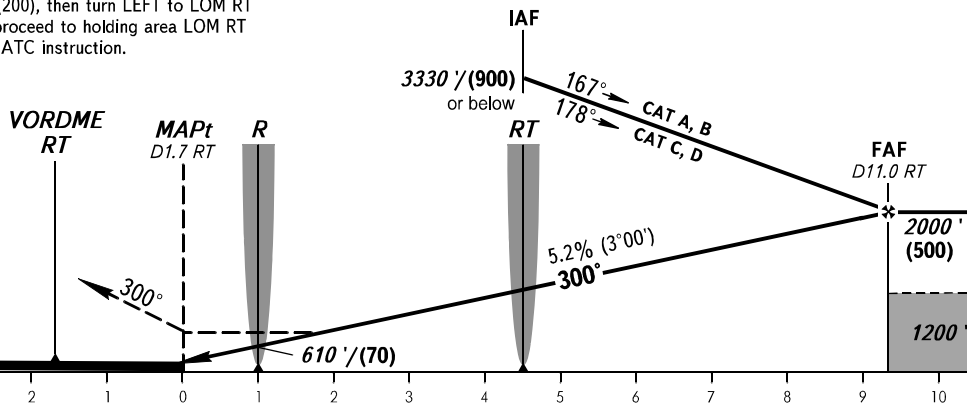
GORDY RADAR 125.250

RAMENSKOYE, RUSSIA
RAMENSKOYE
NDB Y RWY 30



MISSED APPROACH

Climb straight ahead to 1040' / (200), then turn LEFT to LOM RT climbing to 2000' / (500). Then proceed to holding area LOM RT climbing to 6280' / (1800) or by ATC instruction.



OCA(H)		A	B	C	D	HEL	1 TRANSITION LEVEL:										
Straight-in Approach	NDB (LMM)	730' / (110)	730' / (110)	730' / (110)	730' / (110)	730' / (110)	- FL110 when QNH is 1013 hPa (760mm mercury column) or above;										
							- FL120 when QNH is 977 hPa (733mm mercury column) or above, but less than 1013 hPa (760mm mercury column);										
Circling							- FL130 when QNH is less than 977 hPa (733mm mercury column).										
GROUND SPEED		km/h		150	180	210	240	270	300	330	360	390	420	450			
RATE OF DESCENT		m/s		2.2	2.6	3.1	3.5	3.9	4.4	4.8	5.2	5.7	6.1	6.6			
RATE OF DESCENT		ft/min		433	512	610	689	768	866	945	1024	1122	1201	1299			