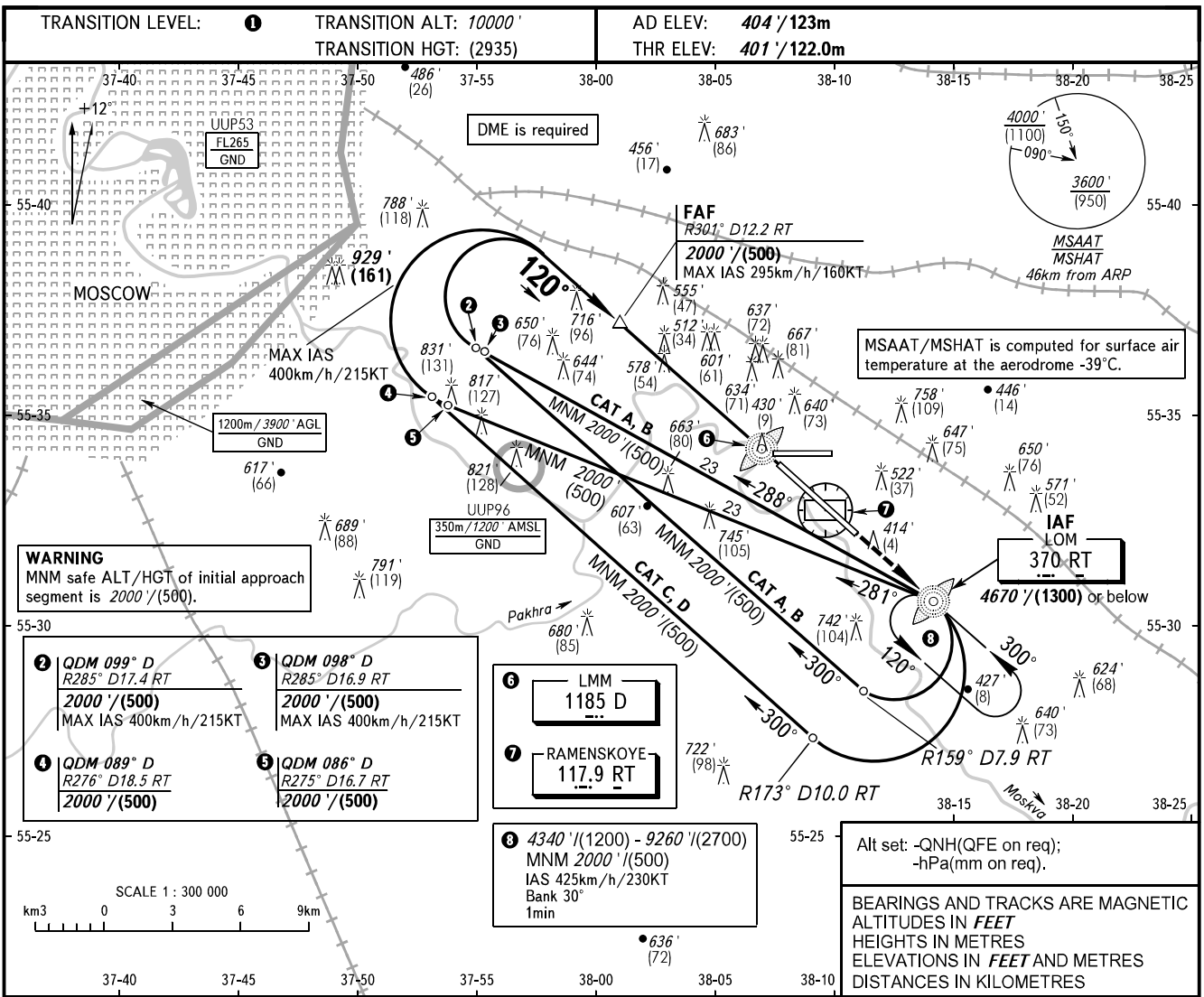


**INSTRUMENT
APPROACH
CHART - ICAO**

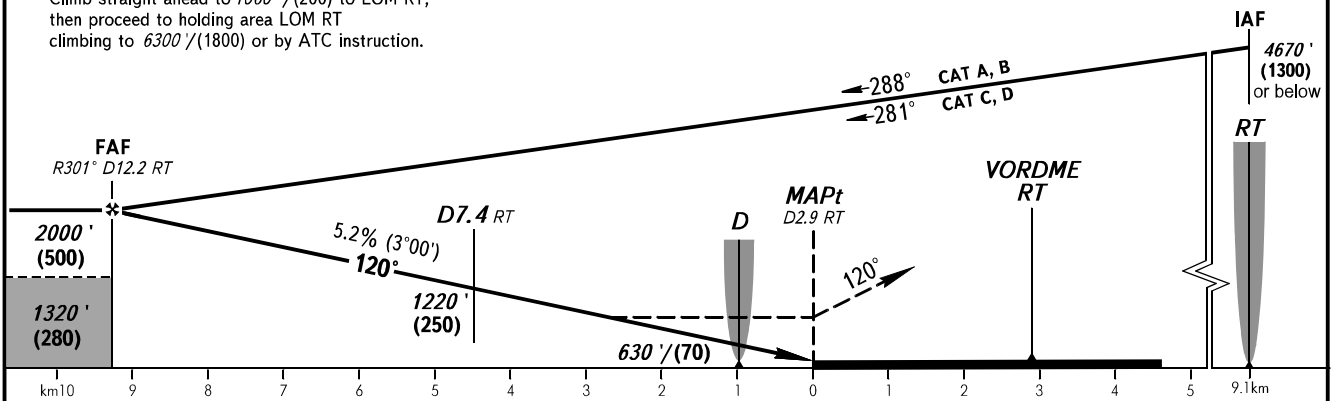
GORDY RADAR 125.250

RAMENSKOYE, RUSSIA
RAMENSKOYE
NDB Y RWY 12



MISSED APPROACH

Climb straight ahead to 1060' / (200) to LOM RT, then proceed to holding area LOM RT climbing to 6300' / (1800) or by ATC instruction.



		A	B	C	D	HEL	1 TRANSITION LEVEL: - FL110 when QNH is 1013 hPa (760mm mercury column) or above; - FL120 when QNH is 977 hPa (733mm mercury column) or above, but less than 1013 hPa (760mm mercury column); - FL130 when QNH is less than 977 hPa (733mm mercury column).									
Straight-in Approach	NDB (LMM)	880' / (146)	880' / (146)	880' / (146)	880' / (146)	880' / (146)										
	Circling															
GROUND SPEED		km/h	150	180	210	240	270	300	330	360	390	420	450			
RATE OF DESCENT		m/s	2.2	2.6	3.1	3.5	3.9	4.4	4.8	5.2	5.7	6.1	6.6			
RATE OF DESCENT		ft / min	433	512	610	689	768	866	945	1024	1122	1201	1299			

CHANGE: New chart