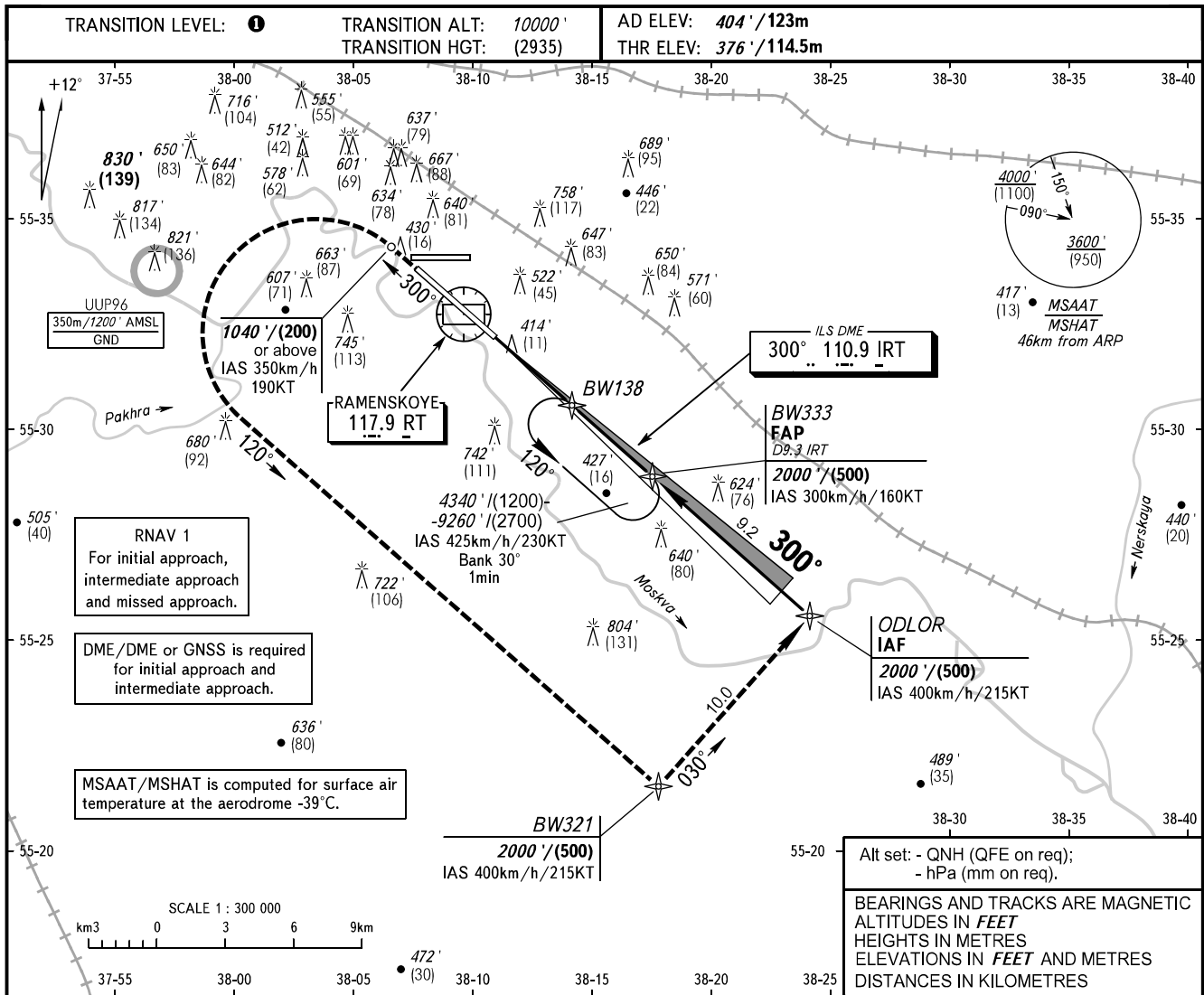


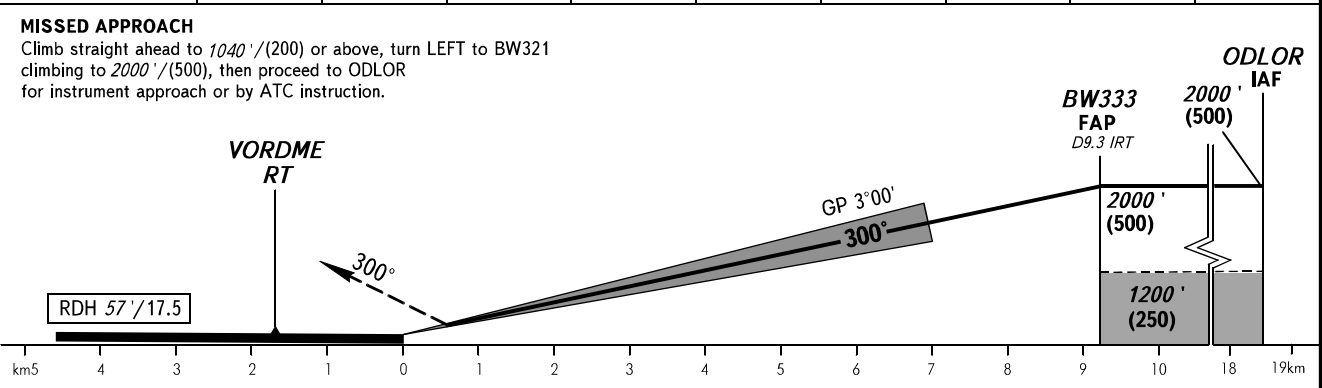
**INSTRUMENT
APPROACH
CHART - ICAO**

GORDY RADAR 125.250

**RAMENSKOYE, RUSSIA
RAMENSKOYE
ILS CAT I RWY 30**



DIST to RWY 30 THR	1.0	2.0	3.0	4.0	5.0	6.0	7.0	8.0	9.0
ALTITUDE/HEIGHT	610' / (70)	770' / (120)	950' / (175)	1120' / (225)	1300' / (280)	1460' / (330)	1640' / (385)	1810' / (435)	1970' / (485)



OCA(H)		A	B	C	D	HEL	① TRANSITION LEVEL: - FL110 when QNH is 1013 hPa (760mm mercury column) or above; - FL120 when QNH is 977 hPa (733mm mercury column) or above, but less than 1013 hPa (760mm mercury column); - FL130 when QNH is less than 977 hPa (733mm mercury column).						
Straight-in Approach	CAT I	514' / (42)	521' / (45)	532' / (48)	541' / (51)	514' / (42)							
	Circling												
GROUND SPEED		km/h	150	180	210	240	270	300	330	360	390	420	450
RATE OF DESCENT		m/s	2.2	2.6	3.1	3.5	3.9	4.4	4.8	5.2	5.7	6.1	6.6
		ft/min	433	512	610	689	768	866	945	1024	1122	1201	1299

CHANGE: New chart