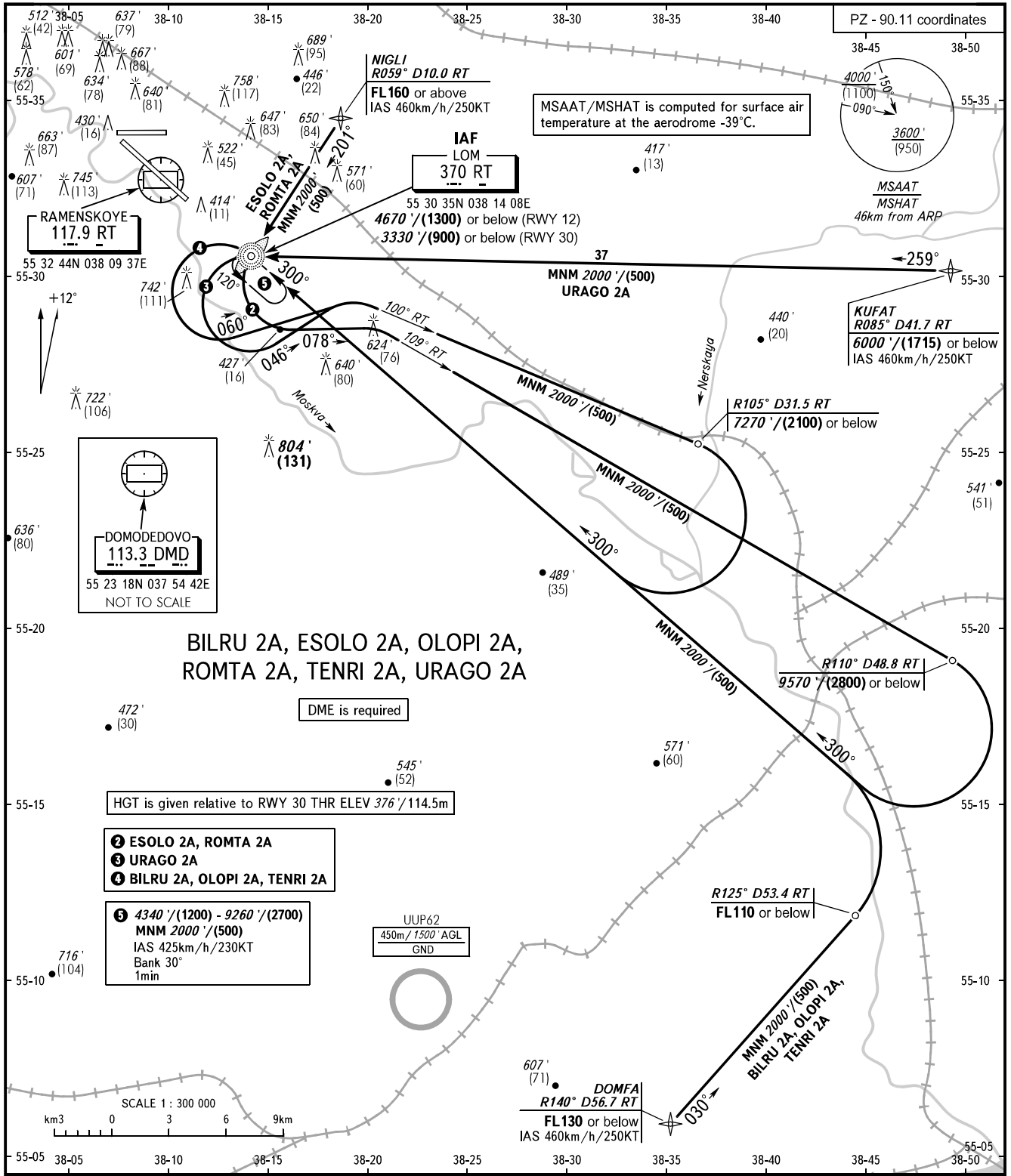


# STANDARD ARRIVAL CHART INSTRUMENT (STAR) - ICAO

# RAMENSKOYE, RUSSIA RAMENSKOYE RWY 12/30

TRANSITION  
LEVEL: **By ATC ①**



GORDY APPROACH	125.250
GORDY RADAR	125.250
DOMODEDOVO RADAR	125.300 129.800 134.675
MOSCOW APPROACH	127.700 132.050
	127.200 128.000 131.200 134.000

BEARINGS AND TRACKS ARE MAGNETIC	Alt set: -QNH(QFE on req);
ALTITUDES IN FEET	-hPa(mm on req).
HEIGHTS IN METRES	
ELEVATIONS IN FEET AND METRES	
DISTANCES IN KILOMETRES	

**① TRANSITION LEVEL:**

- FL110 when QNH is 1013 hPa (760mm mercury column) or above;
- FL120 when QNH is 977 hPa (733mm mercury column) or above, but less than 1013 hPa (760mm mercury column);
- FL130 when QNH is less than 977 hPa (733mm mercury column).