

STANDARD ARRIVAL CHART
INSTRUMENT (STAR) - ICAO

RAMENSKOYE, RUSSIA
RAMENSKOYE
RWY 12/30

TRANSITION
LEVEL: By ATC ①

GORDY APPROACH	125.250
GORDY RADAR	125.250
DOMODEDOVO RADAR	125.300 129.800 134.675
MOSCOW APPROACH	127.700 132.050
MOSCOW APPROACH	127.200 128.000 131.200 134.000

PZ - 90.11 coordinates



MSAAT / MSHAT
46km from ARP

492' (36)

417' (13)

440' (20)

427' (16)

446' (22)

55 32 44N 038 09 37E

117.9 RT

489' (35)

545' (52)

571' (60)

472' (30)

55 23 18N 037 54 42E

113.3 DMD

55 09 10N 038 17 19E

732 AO

607' (71)

627' (77)

531' (48)

564' (58)

55 09 10N 038 17 19E

113.5 GLW

55 09 46N 037 47 55E

113.5 GLW

55 09 46N 037 47 55E

113.5 GLW

55 09 46N 037 47 55E

113.5 GLW

55 09 46N 037 47 55E

113.5 GLW

55 09 46N 037 47 55E

113.5 GLW

55 09 46N 037 47 55E

113.5 GLW

55 09 46N 037 47 55E

113.5 GLW

55 09 46N 037 47 55E

113.5 GLW

55 09 46N 037 47 55E

113.5 GLW

55 09 46N 037 47 55E

113.5 GLW

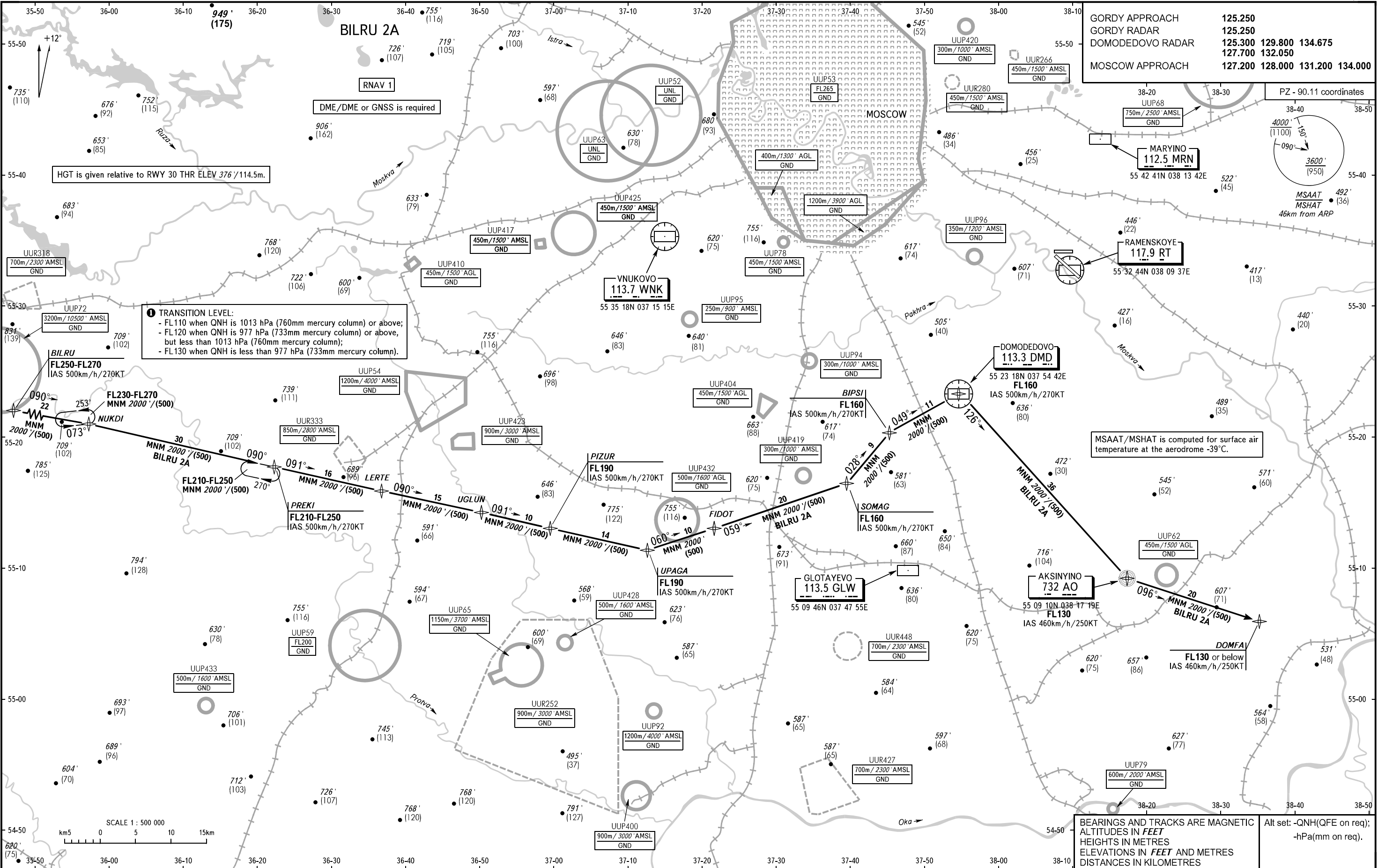
55 09 46N 037 47 55E

113.5 GLW

55 09 46N 037 47 55E

113.5 GLW

55 09 46N 037 47 55E



① TRANSITION LEVEL:
 - FL110 when QNH is 1013 hPa (760mm mercury column) or above;
 - FL120 when QNH is 977 hPa (733mm mercury column);
 - FL130 when QNH is less than 977 hPa (733mm mercury column).

HGT is given relative to RWY 30 THR ELEV 376 / 114.5m.

DME/DME or GNSS is required

MSAAT / MSHAT is computed for surface air temperature at the aerodrome -39°C.

SCALE 1 : 500 000
0 5 10 15 km

BEARINGS AND TRACKS ARE MAGNETIC
 ALTITUDES IN FEET
 HEIGHTS IN METRES
 ELEVATIONS IN FEET AND METRES
 DISTANCES IN KILOMETRES

Alt set: -QNH(QFE on req);
 -hPa(mm on req).