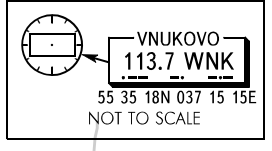
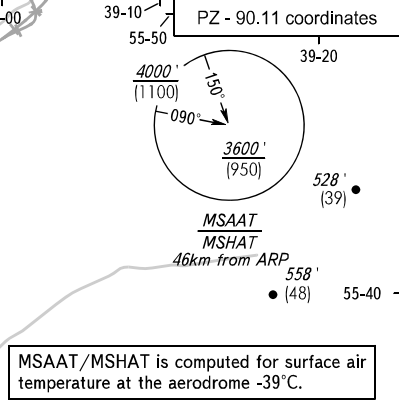
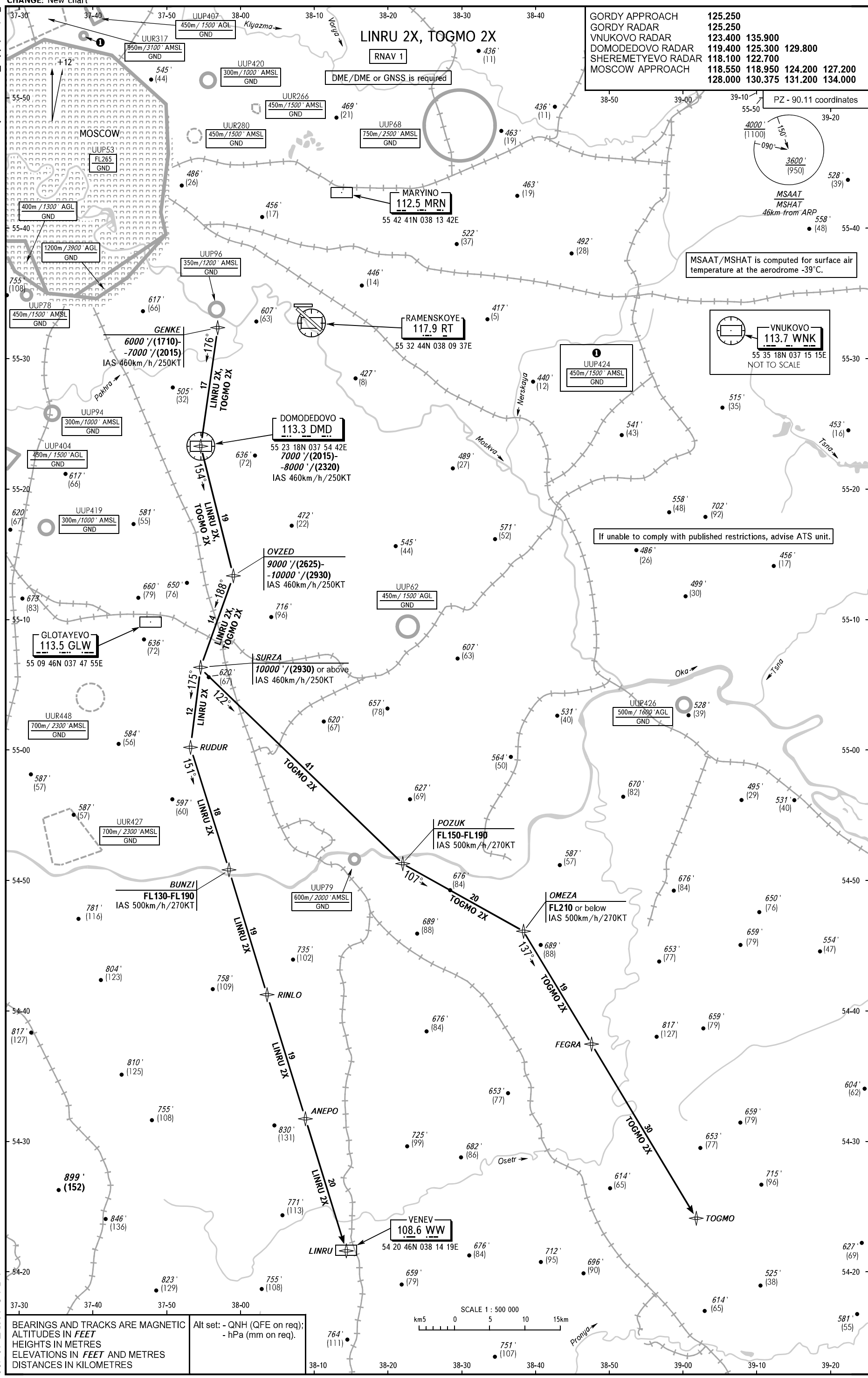


GORDY APPROACH	125.250
GORDY RADAR	125.250
VNUKOVO RADAR	123.400 135.900
DOMODEDOVO RADAR	119.400 125.300 129.800
SHEREMETYEVO RADAR	118.100 122.700
MOSCOW APPROACH	118.550 118.950 124.200 127.200
	128.000 130.375 131.200 134.000



MSAAT/MSHAT is computed for surface air temperature at the aerodrome -39°C.

If unable to comply with published restrictions, advise ATS unit.

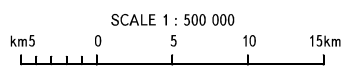


CHANGE: New chart  
Federal Air Transport Agency

AIRAC AMDT 10/23

BEARINGS AND TRACKS ARE MAGNETIC  
ALTITUDES IN FEET  
HEIGHTS IN METRES  
ELEVATIONS IN FEET AND METRES  
DISTANCES IN KILOMETRES

Alt set: - QNH (QFE on req);  
- hPa (mm on req).



SCALE 1 : 500 000