

KOGOM 2X, OLMUN 2X, RILPO 2X

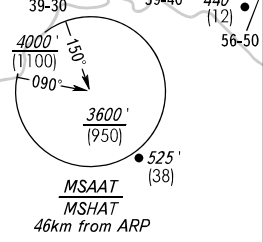
GORDY APPROACH	125.250
GORDY RADAR	125.250
VNUKOVO RADAR	123.400 135.900
DOMODEDOVO RADAR	119.400 125.300 129.800
SHEREMETYEVO RADAR	118.100 122.700
MOSCOW APPROACH	118.550 118.950 124.200 127.200
	130.375 128.000 131.200 134.000

RNAV 1
DME/DME or GNSS is required

If unable to comply with published restrictions, advise ATS unit.

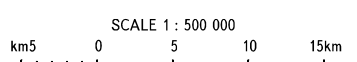
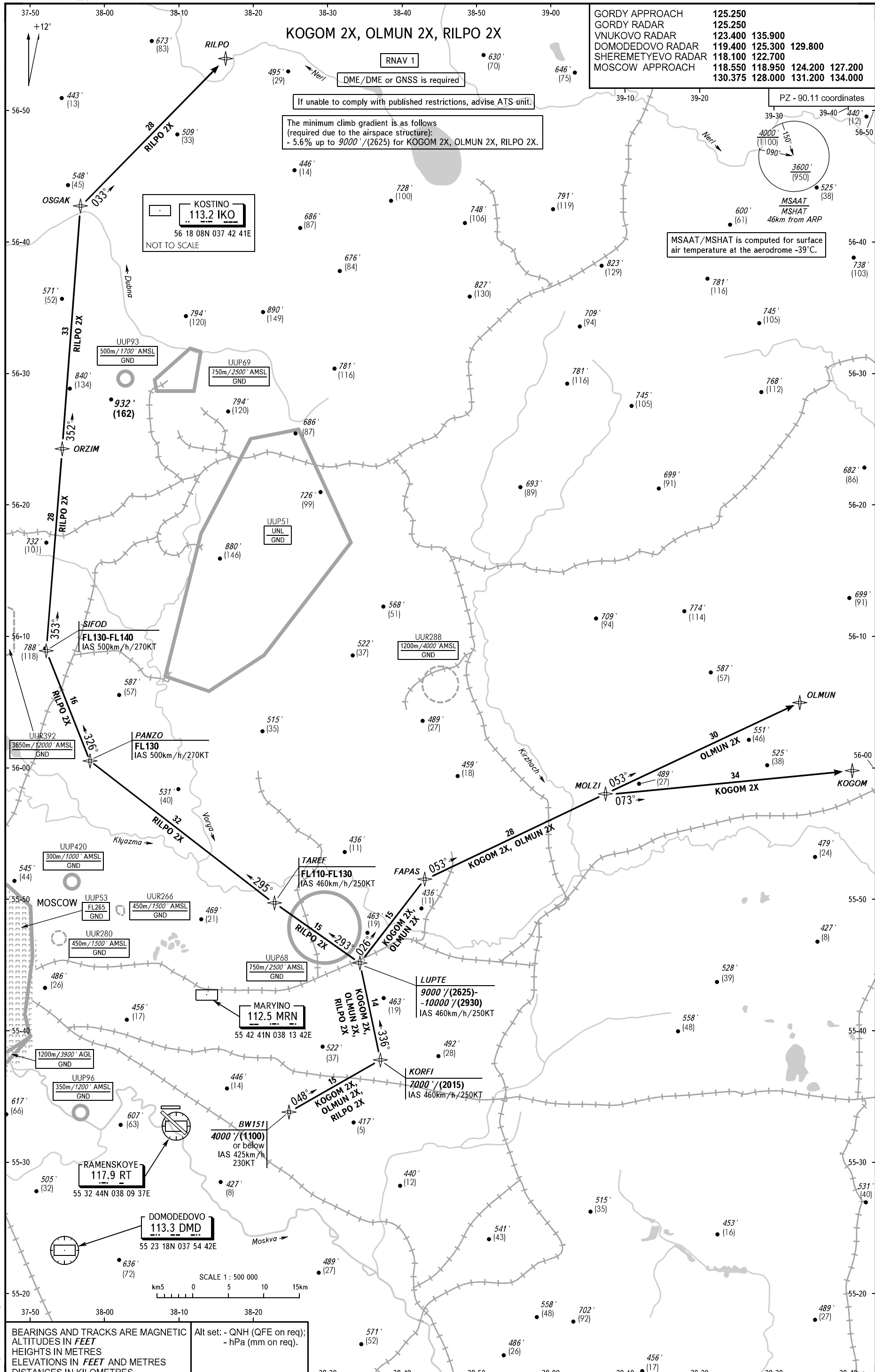
The minimum climb gradient is as follows (required due to the airspace structure):
- 5.6% up to 9000' / (2625) for KOGOM 2X, OLMUN 2X, RILPO 2X.

PZ - 90.11 coordinates



MSAAT/MSHAT is computed for surface air temperature at the aerodrome -39°C.

KOSTINO
113.2 IKO
56 18 08N 037 42 41E
NOT TO SCALE



BEARINGS AND TRACKS ARE MAGNETIC
ALTITUDES IN FEET
HEIGHTS IN METRES
ELEVATIONS IN FEET AND METRES
DISTANCES IN KILOMETRES

Alt set: - QNH (QFE on req);
- hPa (mm on req).