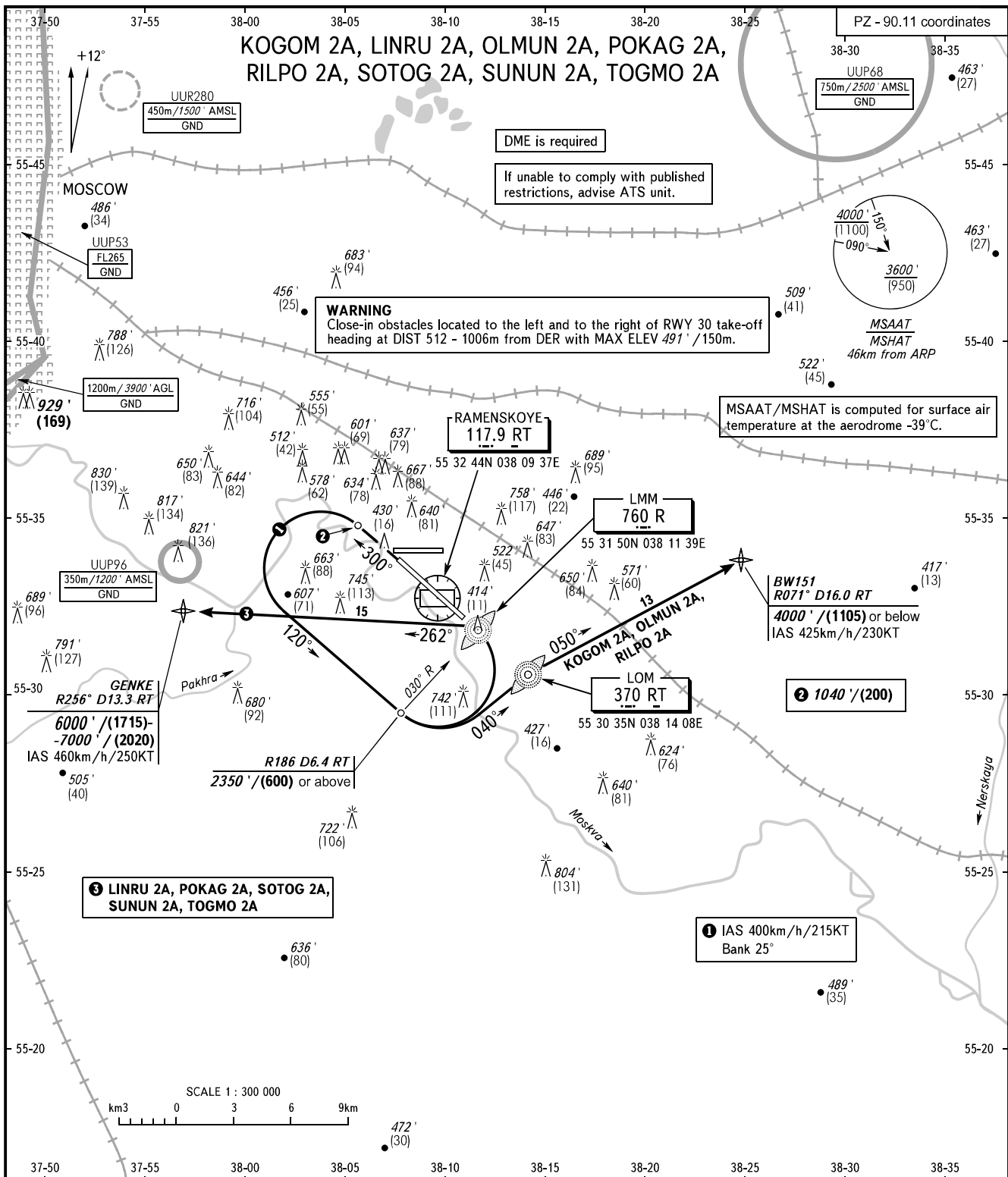


STANDARD DEPARTURE CHART
INSTRUMENT (SID) - ICAO

TRANSITION ALT: 10000'
TRANSITION HGT: (2935)

RAMENSKOYE, RUSSIA
RAMENSKOYE
RWY 30



WARNING
Close-in obstacles located to the left and to the right of RWY 30 take-off heading at DIST 512 - 1006m from DER with MAX ELEV 491' /150m.

MSAAT/MSHAT is computed for surface air temperature at the aerodrome -39°C.

BW151
R071 D16.0 RT
4000' / (1105) or below
IAS 425km/h/230KT

② 1040' / (200)

① IAS 400km/h/215KT
Bank 25°

GORDY APPROACH	125.250			
GORDY RADAR	125.250			
VNUKOVO RADAR	123.400	135.900		
DOMODEDOVO RADAR	119.400	125.300	129.800	
SHEREMETYEVO RADAR	118.100	122.700		
MOSCOW APPROACH	118.550	118.950	124.200	127.200
	130.375	128.000	131.200	134.000

BEARINGS AND TRACKS ARE MAGNETIC
ALTITUDES IN FEET
HEIGHTS IN METRES
ELEVATIONS IN FEET AND METRES
DISTANCES IN KILOMETRES

Alt set: - QNH (QFE on req);
- hPa (mm on req).