

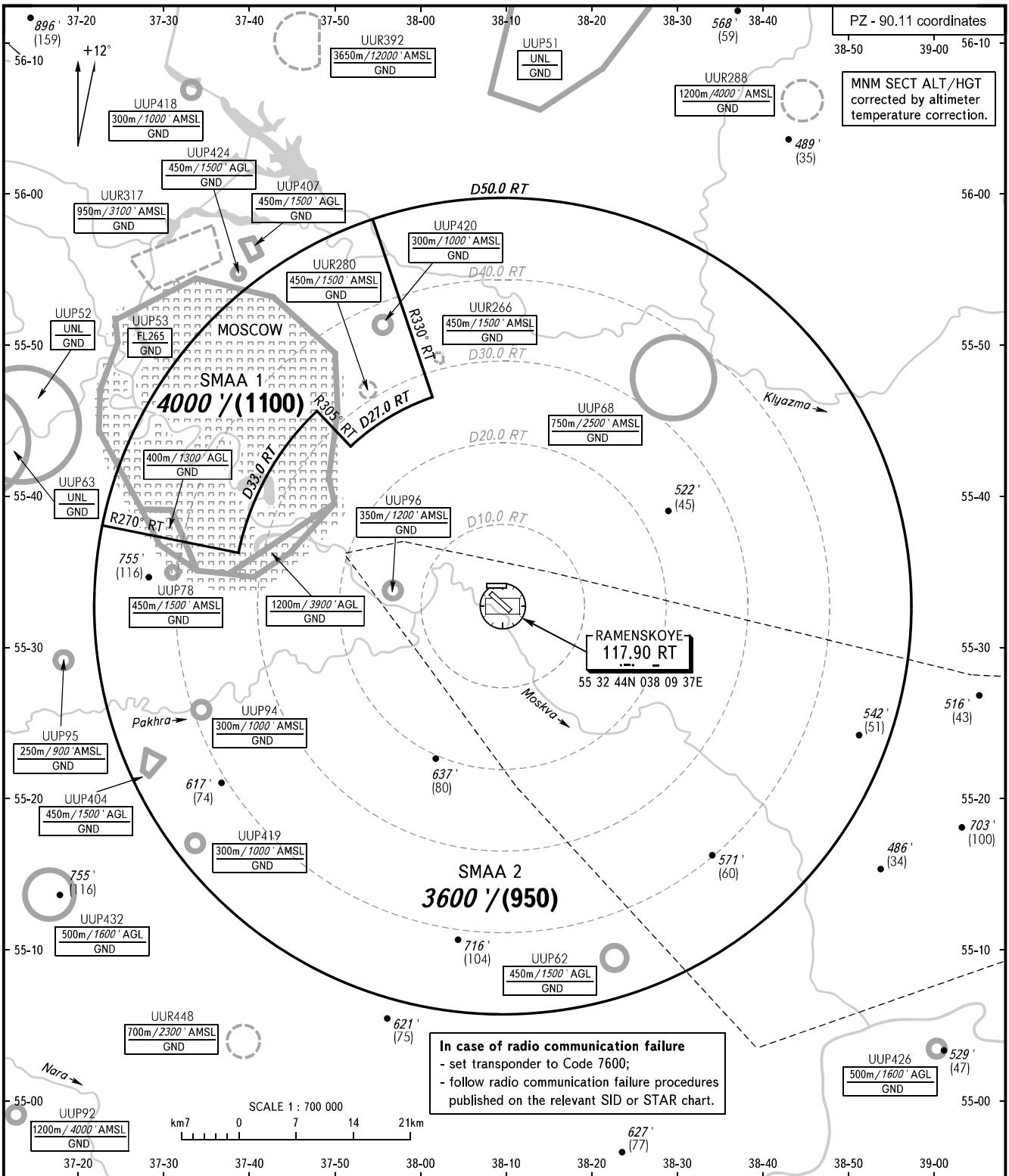
ATC SURVEILLANCE MINIMUM
ALTITUDE CHART - ICAO

ELEV
404 / 123m

TRANSITION ALT: 1000'
TRANSITION HGT: (2935)

RAMENSKOYE, RUSSIA

RAMENSKOYE



GORDY RADAR 125.250
GORDY APPROACH 125.250

NOTE:
1. Flight levels assigned by ATC take into account correction for low temperature effect, if necessary.
2. The chart may only be used for cross-checking of the assigned vectoring altitudes.

BEARINGS AND TRACKS ARE MAGNETIC
ALTITUDES IN FEET
HEIGHTS IN METRES
ELEVATIONS IN FEET AND METRES
DISTANCES IN KILOMETRES

Alt set: -QNH(QFE on req);
-hPa(mm on req).

CHANGE: New chart