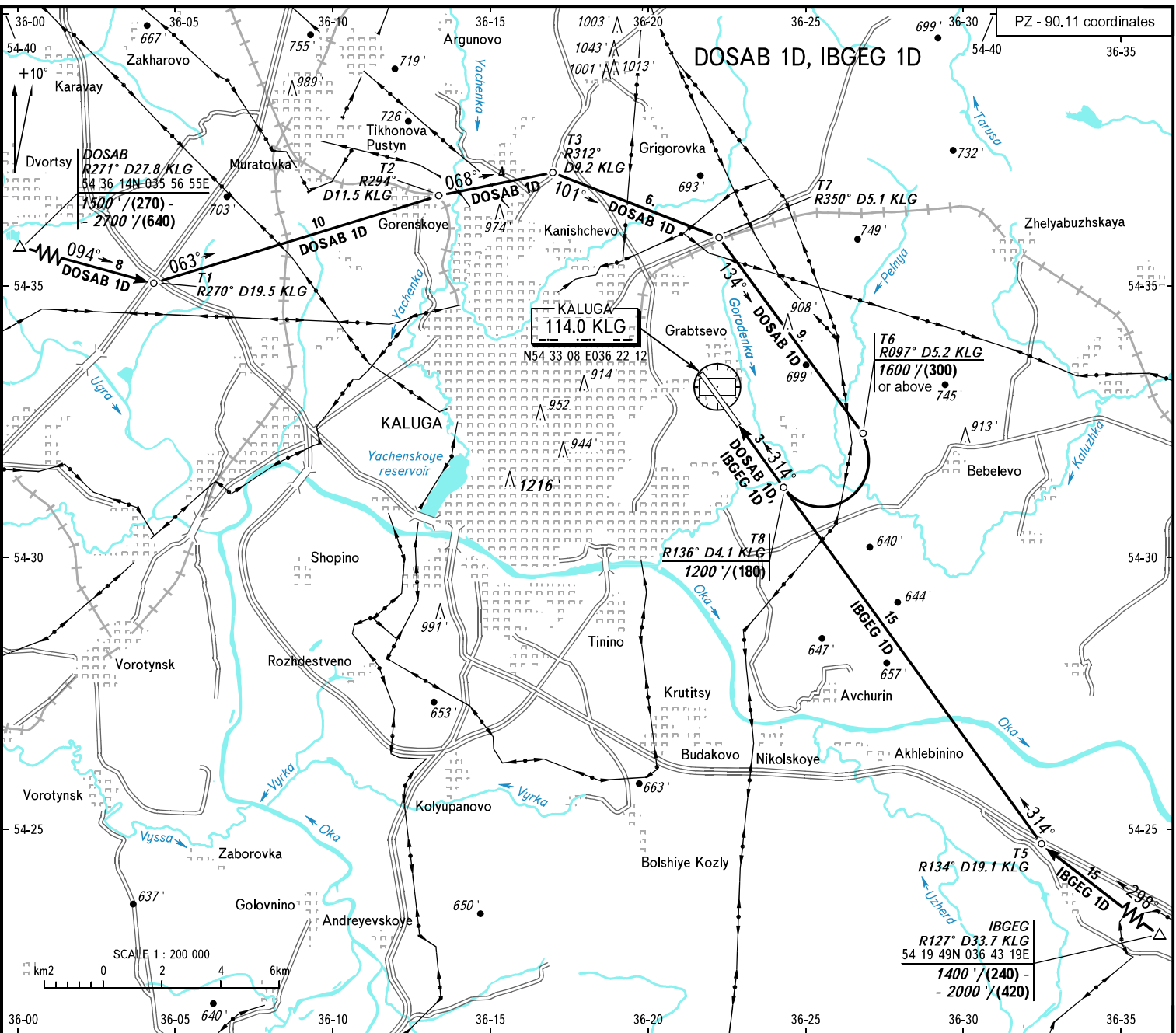


VFR
ARRIVAL
CHART

TRANSITION
LEVEL: 1

KALUGA, RUSSIA
GRABITSEVO
RWY 31



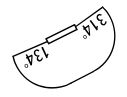
1 TRANSITION LEVEL:

- FLO60 when QNH is 1013 hPa (760mm mercury column) or above;
- FLO70 when QNH is 977 hPa (733mm mercury column) or above, but less than 1013 hPa (760mm mercury column);
- FLO80 when QNH is less than 977 hPa (733mm mercury column).

WARNING
Visual manoeuvring WEST of AD is PROHIBITED.

BEARINGS AND TRACKS ARE MAGNETIC
ALTITUDES AND ELEVATIONS IN FEET
DISTANCES IN KILOMETRES

All set: -QNH(QFE on req);
-Pa(mm on req).



CHANGE: New chart