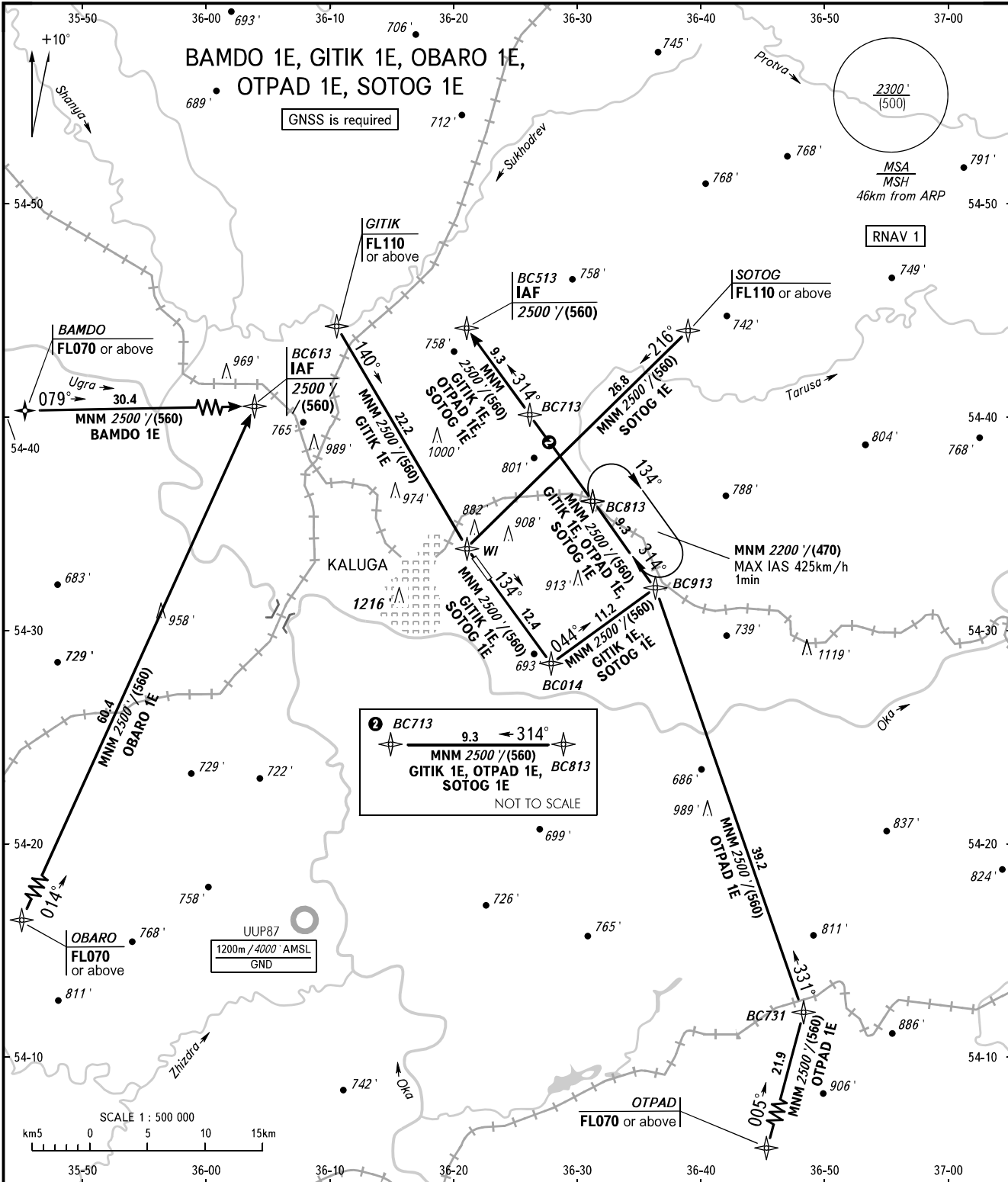


STANDARD ARRIVAL CHART
INSTRUMENT (STAR) - ICAO

KALUGA, RUSSIA
GRABTSEVO
RNAV RWY 13

TRANSITION
LEVEL: 1



2 BC713
9.3 → 314°
MNM 2500'/(560)
GITIK 1E, OBARO 1E,
SOTOG 1E
NOT TO SCALE

- 1 TRANSITION LEVEL:
- FL060 when QNH is 1013 hPa (760mm mercury column) or above;
 - FL070 when QNH is 977 hPa (733mm mercury column) or above, but less than 1013 hPa (760mm mercury column);
 - FL080 when QNH is less than 977 hPa (733mm mercury column).

BEARINGS AND TRACKS ARE MAGNETIC
ALTITUDES AND ELEVATIONS IN FEET
DISTANCES IN KILOMETRES

Alt set: -QNH(QFE on req);
-hPa(mm on req).

CHANGE: UUR214 withdrawn