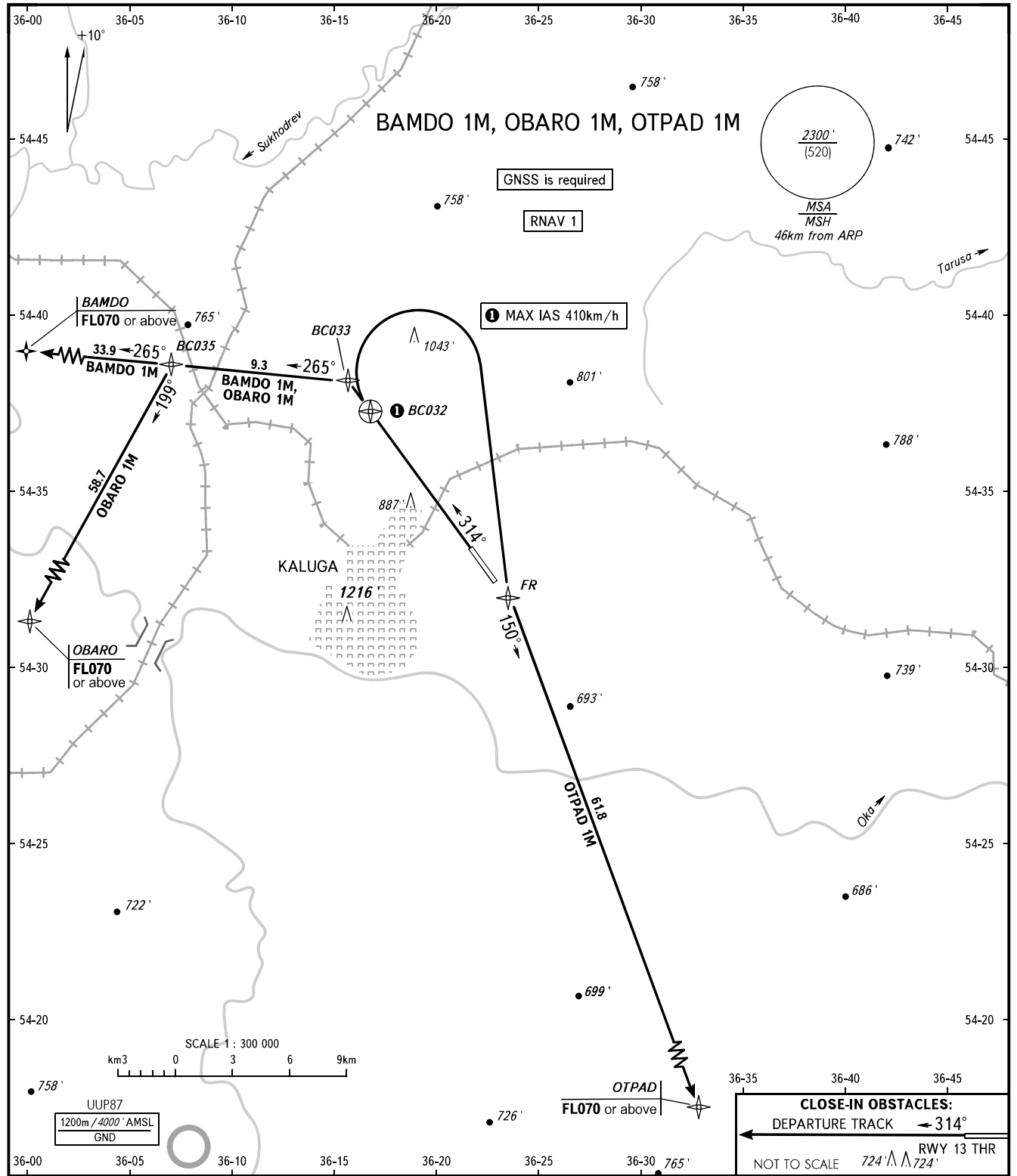


STANDARD DEPARTURE CHART
INSTRUMENT (SID) - ICAO

KALUGA, RUSSIA
GRABTSEVO
RNAV RWY 31

TRANSITION ALT: 5000'
TRANSITION HGT: (1340)



CLOSE-IN OBSTACLES:
 DEPARTURE TRACK ← 314°
 NOT TO SCALE 724' MSL / 724' AGL RWY 13 THR

KALUGA TOWER 120.300

WARNING
There are close-in obstacles.

BEARINGS AND TRACKS ARE MAGNETIC
ALTITUDES AND ELEVATIONS IN FEET
DISTANCES IN KILOMETRES

Alt set: -QNH(QFE on req);
-hPa(mm on req).

CHANGE: UUR214 withdrawn