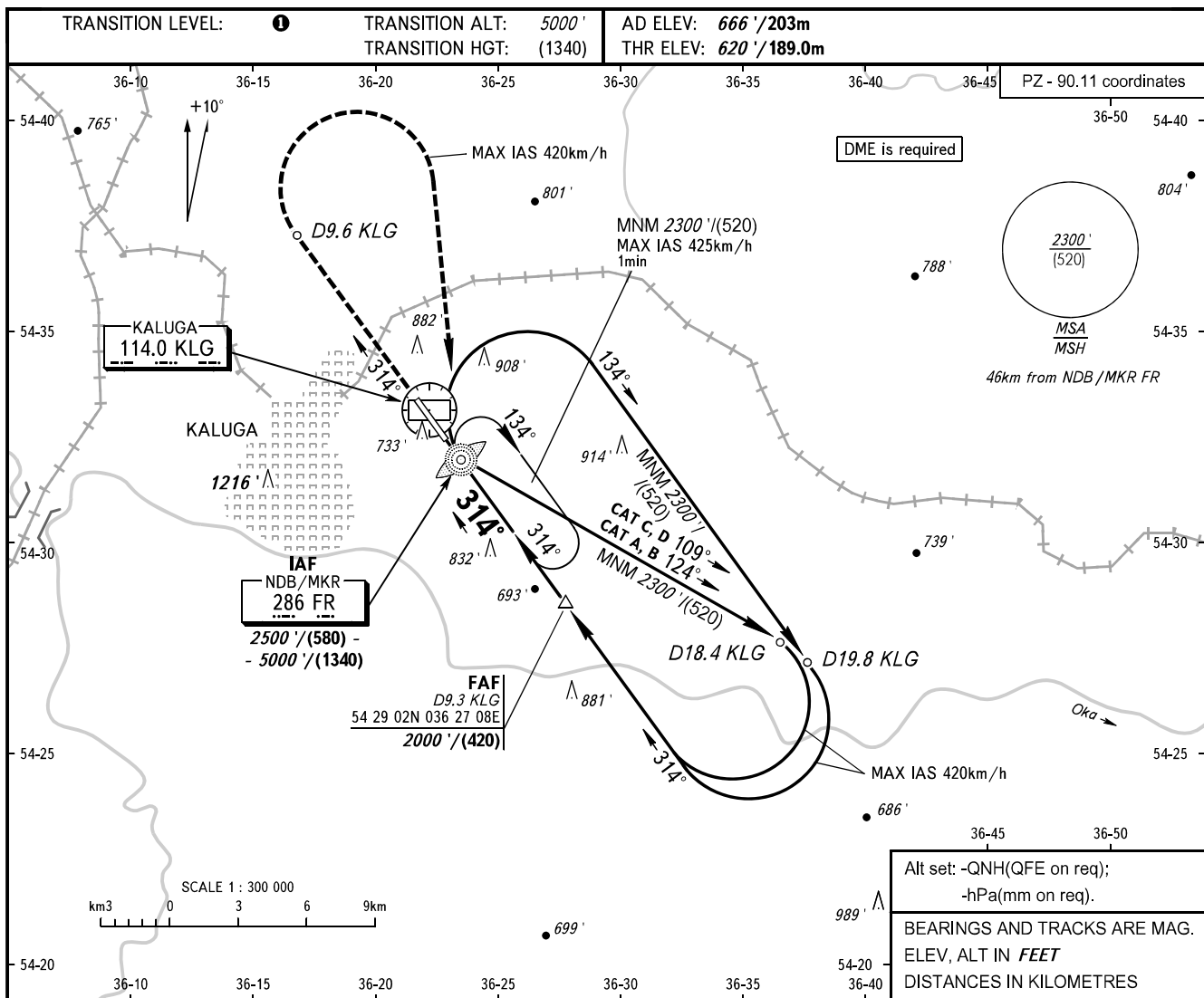


**INSTRUMENT
APPROACH
CHART - ICAO**

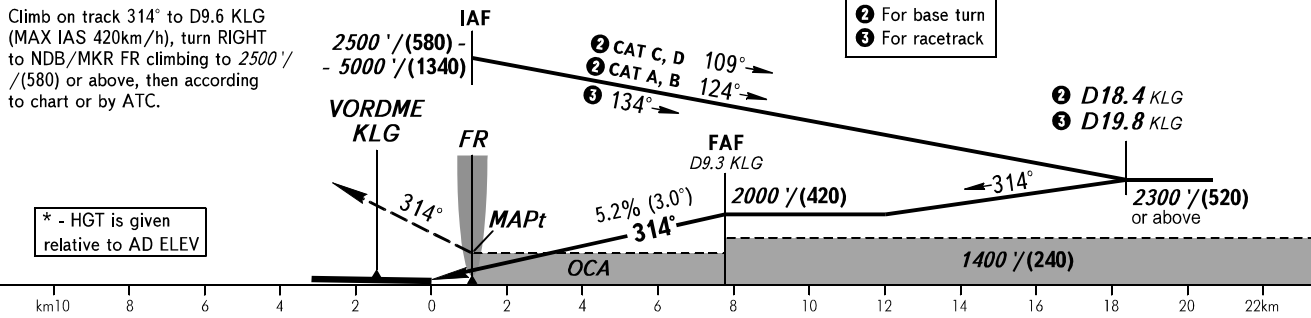
KALUGA TOWER 120.300

**KALUGA, RUSSIA
GRABTSEVO
NDB X RWY 31**



MISSED APPROACH

Climb on track 314° to D9.6 KLG (MAX IAS 420km/h), turn RIGHT to NDB/MKR FR climbing to 2500' / (580) or above, then according to chart or by ATC.



OCA(H)	A	B	C	D
Straight-in Approach	1080' (460') / (145)	1080' (460') / (145)	1080' (460') / (145)	1080' (460') / (145)
Circling	1180' (520') / (160)*	1210' (550') / (170)*	1310' (650') / (200)*	1360' (700') / (220)*

① TRANSITION LEVEL:
- FL060 when QNH is 1013 hPa (760mm mercury column) or above;
- FL070 when QNH is 977 hPa (733mm mercury column) or above, but less than 1013 hPa (760mm mercury column);
- FL080 when QNH is less than 977 hPa (733mm mercury column).

WARNING:
1. Visual manoeuvring WEST of AD is PROHIBITED.
2. MAPt at NDB/MKR FR. Timing not authorized for defining MAPt.

GROUND SPEED	km/h	150	180	210	240	270	300	330	360	390
RATE OF DESCENT	m/s	2.2	2.6	3.0	3.5	3.9	4.3	4.8	5.2	5.6
RATE OF DESCENT	ft/min	427	512	597	682	768	853	938	1024	1109