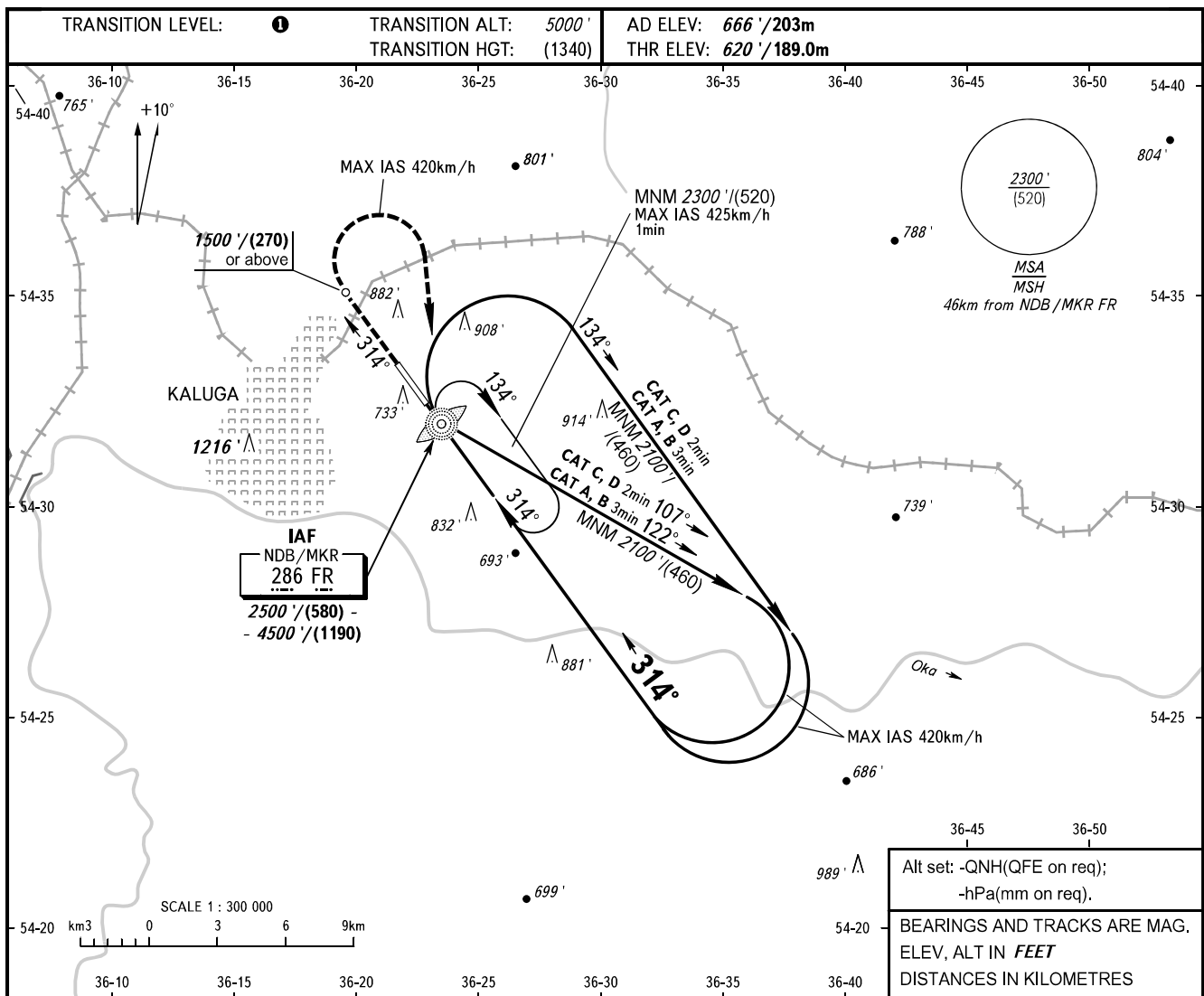


**INSTRUMENT
APPROACH
CHART - ICAO**

KALUGA TOWER 120.300

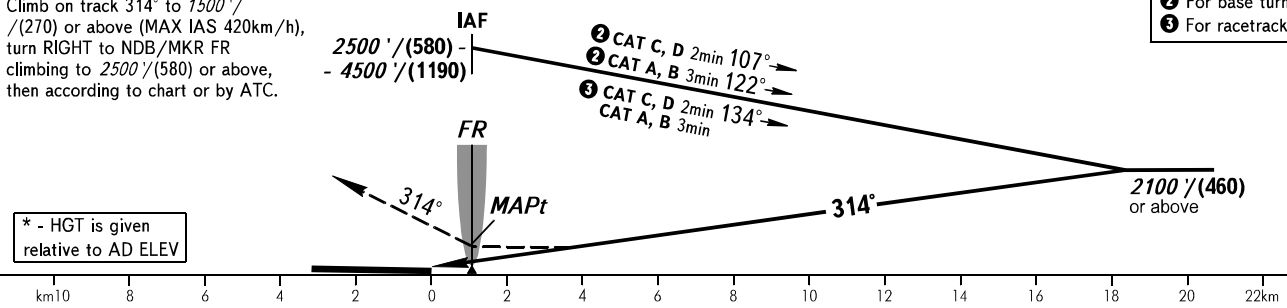
KALUGA, RUSSIA
GRABTSEVO
NDB Y RWY 31



MISSED APPROACH

Climb on track 314° to 1500' / (270) or above (MAX IAS 420km/h), turn RIGHT to NDB/MKR FR climbing to 2500' / (580) or above, then according to chart or by ATC.

* - HGT is given relative to AD ELEV



- ② For base turn
- ③ For racetrack

OCA(H)		A	B	C	D
Straight-in Approach		1180' (560') / (170)	1180' (560') / (170)	1290' (670') / (205)	1290' (670') / (205)
Circling		1180' (520') / (160)*	1210' (550') / (170)*	1310' (650') / (200)*	1360' (700') / (220)*

- ① TRANSITION LEVEL:
- FL060 when QNH is 1013 hPa (760mm mercury column) or above;
- FL070 when QNH is 977 hPa (733mm mercury column) or above, but less than 1013 hPa (760mm mercury column);
- FL080 when QNH is less than 977 hPa (733mm mercury column).

- WARNING:**
1. Visual manoeuvring WEST of AD is PROHIBITED.
2. MAPt at NDB/MKR FR. Timing not authorized for defining MAPt.

