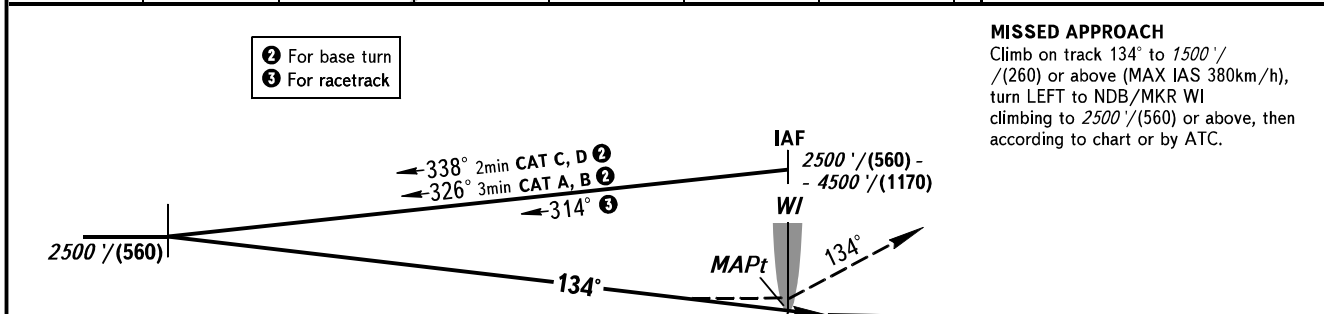
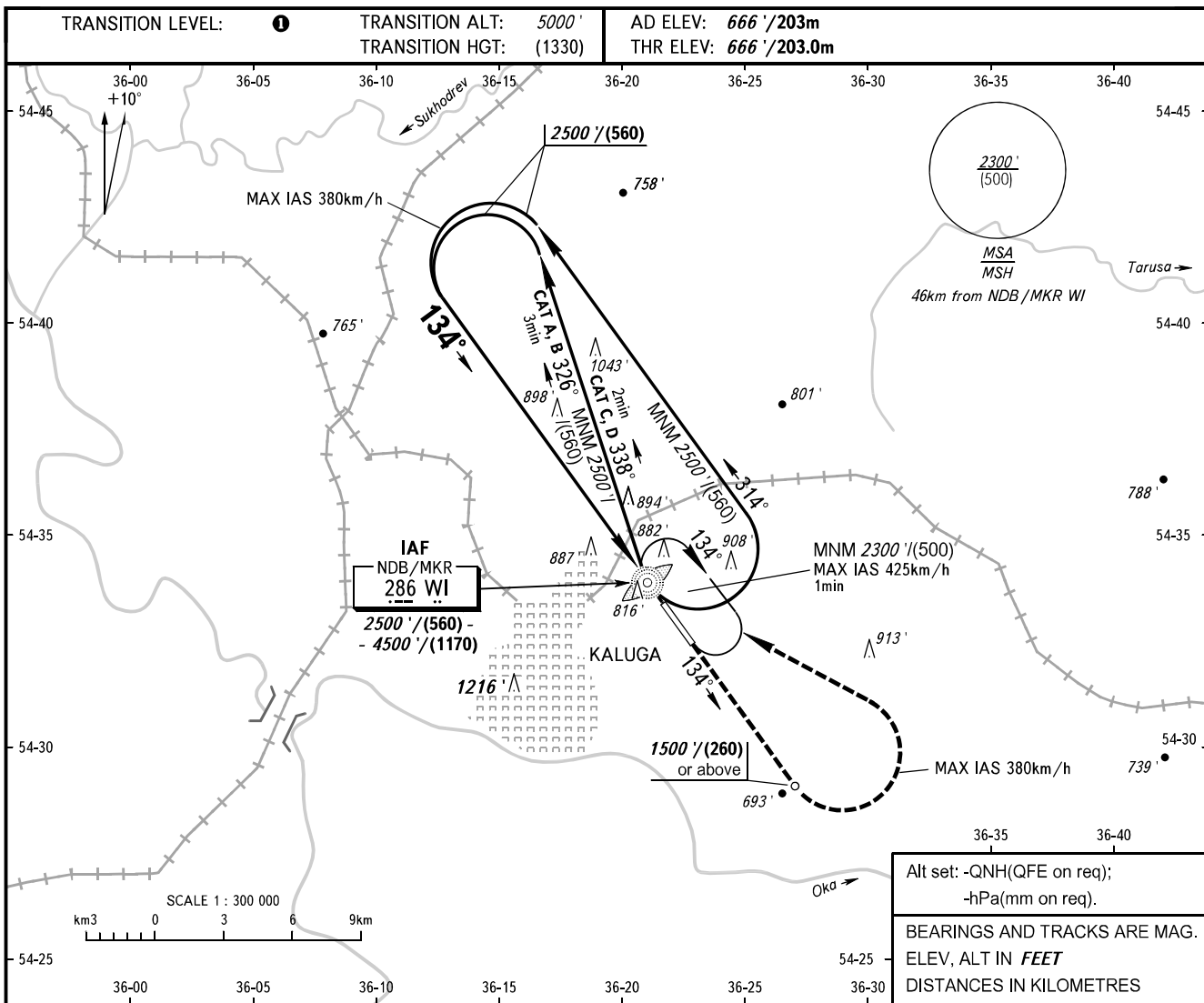


**INSTRUMENT
APPROACH
CHART - ICAO**

KALUGA TOWER 120.300

KALUGA, RUSSIA
GRABTSEVO
NDB Y RWY 13



OCA(H)		A	B	C	D
Straight-in Approach		1200' (530') / (170)	1200' (530') / (170)	1200' (530') / (170)	1200' (530') / (170)
Circling		1180' (520') / (160)*	1210' (550') / (170)*	1310' (650') / (200)*	1360' (700') / (220)*

① TRANSITION LEVEL:
- FL060 when QNH is 1013 hPa (760mm mercury column) or above;
- FL070 when QNH is 977 hPa (733mm mercury column) or above, but less than 1013 hPa (760mm mercury column);
- FL080 when QNH is less than 977 hPa (733mm mercury column).

WARNING:
1. Visual manoeuvring WEST of AD is PROHIBITED.
2. MAPt at NDB/MKR WI. Timing not authorized for defining MAPt.

* - HGT is given relative to AD ELEV

