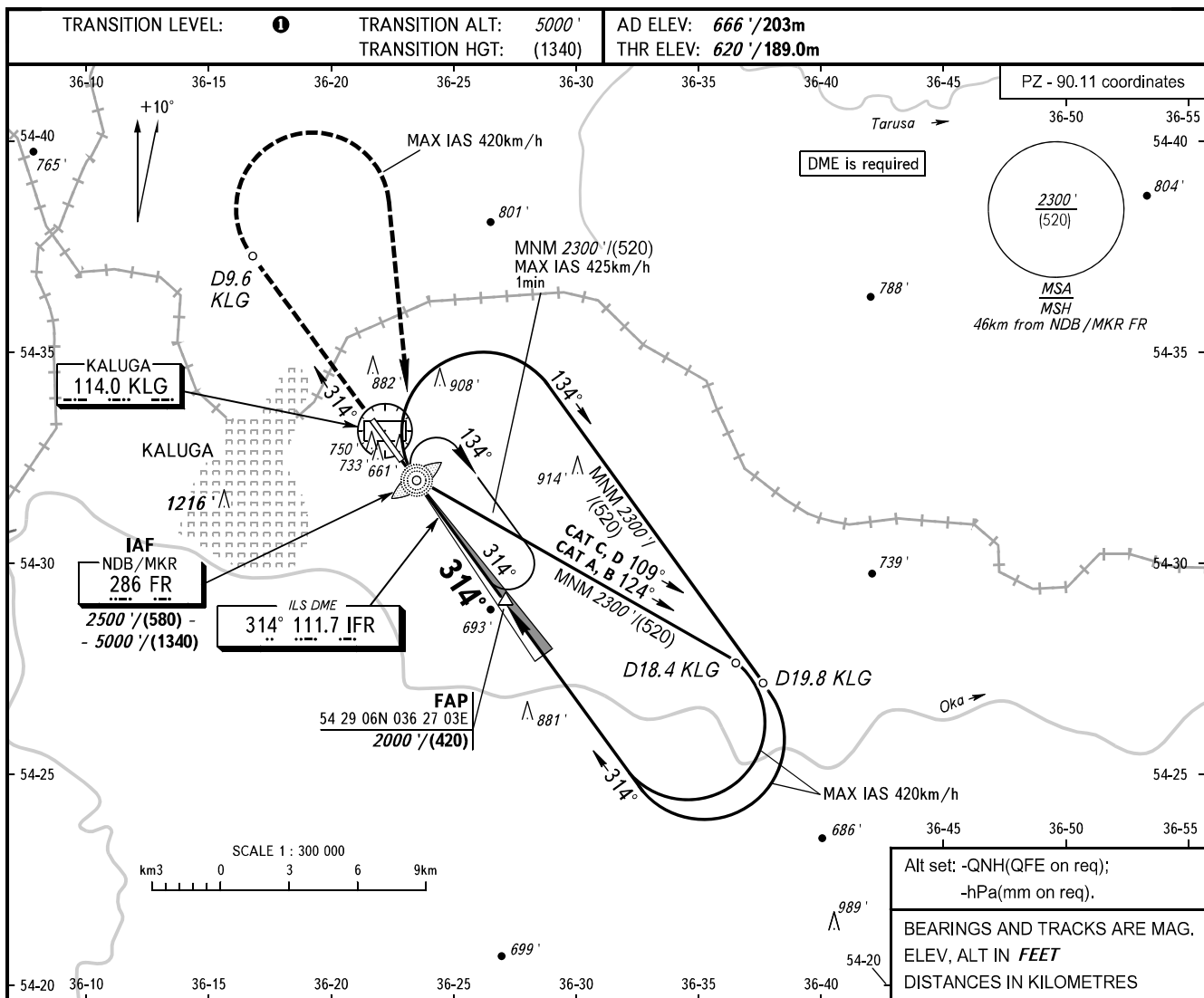


**INSTRUMENT
APPROACH
CHART - ICAO**

KALUGA TOWER 120.300

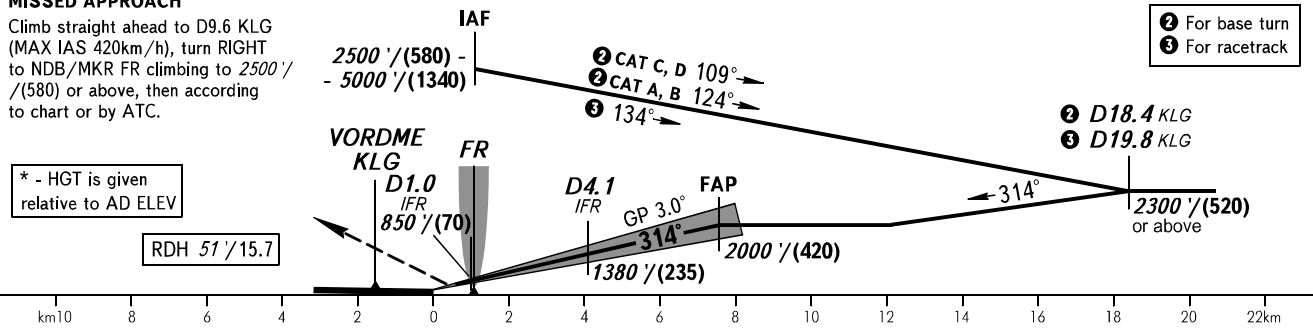
**KALUGA, RUSSIA
GRABTSEVO
ILS Y CAT I RWY 31**



MISSED APPROACH

Climb straight ahead to D9.6 KLG (MAX IAS 420km/h), turn RIGHT to NDB/MKR FR climbing to 2500' / (580) or above, then according to chart or by ATC.

* - HGT is given relative to AD ELEV



OCA(H)		A	B	C	D
Straight-in Approach	CAT I	761' (141') / (45)	773' (153') / (50)	783' (163') / (50)	797' (177') / (55)
Circling		1180' (520') / (160)*	1210' (550') / (170)*	1310' (650') / (200)*	1360' (700') / (220)*

① **TRANSITION LEVEL:**
 - FL060 when QNH is 1013 hPa (760mm mercury column) or above;
 - FL070 when QNH is 977 hPa (733mm mercury column) or above, but less than 1013 hPa (760mm mercury column);
 - FL080 when QNH is less than 977 hPa (733mm mercury column).

WARNING:
 1. Visual manoeuvring WEST of AD is PROHIBITED.
 2. Zero range of DME IFR is indicated at RWY 31 THR.

GROUND SPEED	km/h	150	180	210	240	270	300	330	360	390
RATE OF DESCENT	m/s	2.2	2.6	3.0	3.5	3.9	4.3	4.8	5.2	5.6
RATE OF DESCENT	ft/min	427	512	597	682	768	853	938	1024	1109