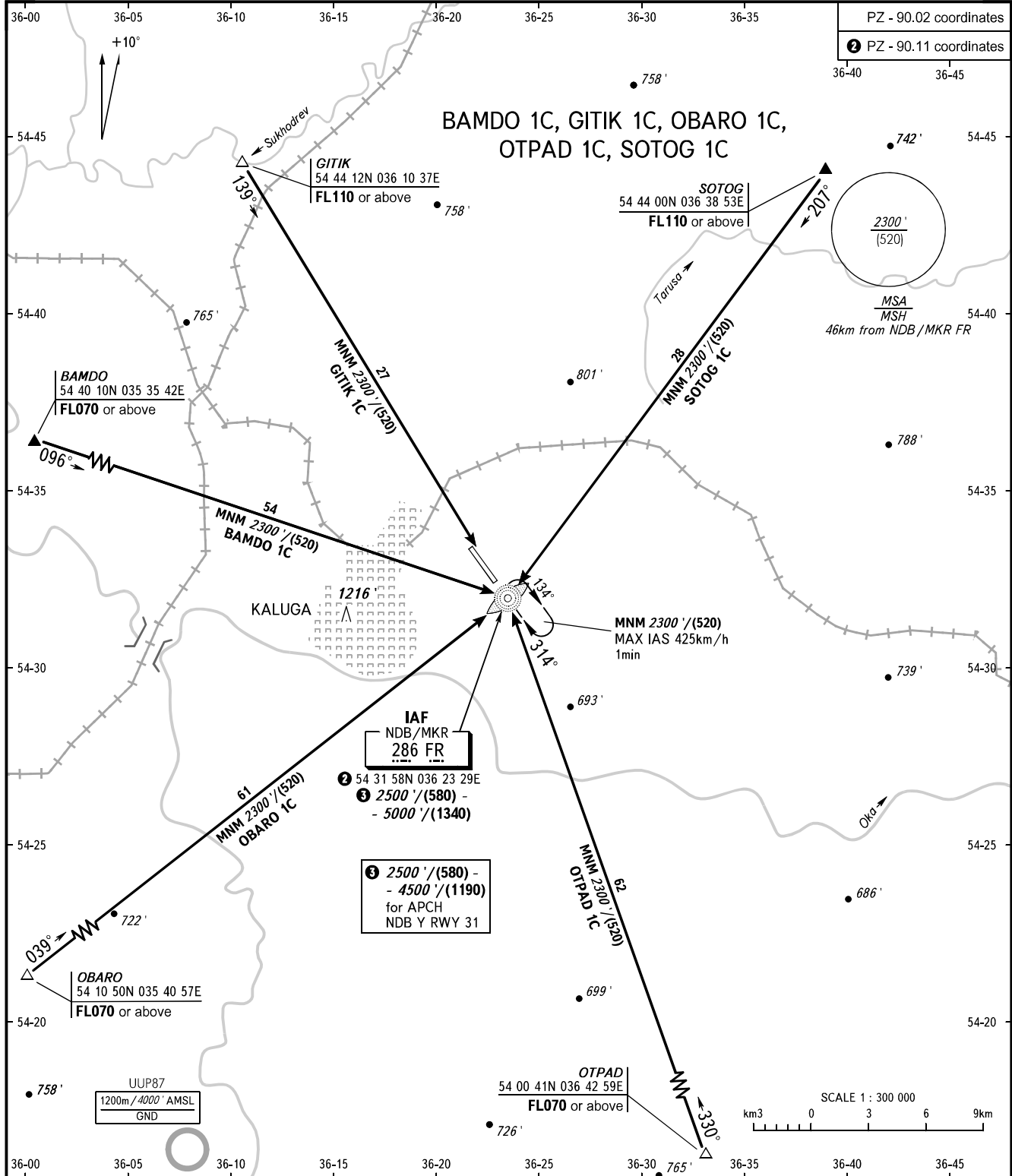


KALUGA, RUSSIA
GRABTSEVO
RWY 31

**STANDARD ARRIVAL CHART
INSTRUMENT (STAR) - ICAO**

TRANSITION
LEVEL: **1**



PZ - 90.02 coordinates
2 PZ - 90.11 coordinates

**BAMDO 1C, GITIK 1C, OBARO 1C,
OTPAD 1C, SOTOG 1C**

KALUGA

IAF
NDB/MKR
286 FR
2 54 31 58N 036 23 29E
3 2500'/(580) -
- 5000'/(1340)

3 2500'/(580) -
- 4500'/(1190)
for APCH
NDB Y RWY 31

MNM 2300'/(520)
MAX IAS 425km/h
1min

SCALE 1 : 300 000
km 0 3 6 9

KALUGA TOWER **120.300**

1 TRANSITION LEVEL:
- FL060 when QNH is 1013 hPa (760mm mercury column) or above;
- FL070 when QNH is 977 hPa (733mm mercury column) or above,
but less than 1013 hPa (760mm mercury column);
- FL080 when QNH is less than 977 hPa (733mm mercury column).

BEARINGS AND TRACKS ARE MAGNETIC
ALTITUDES AND ELEVATIONS IN FEET
DISTANCES IN KILOMETRES

Alt set: -QNH(QFE on req);
-hPa(mm on req).