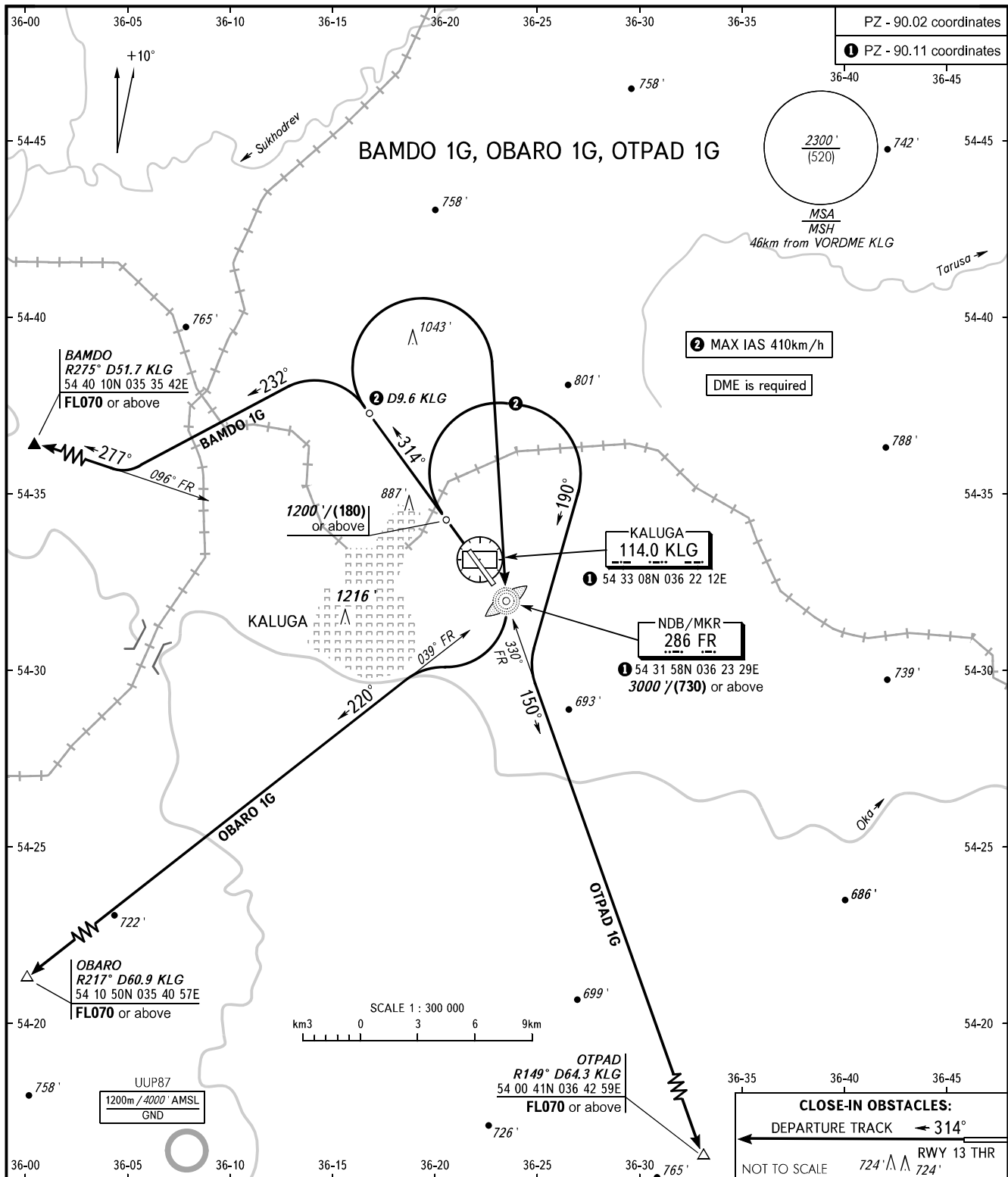


STANDARD DEPARTURE CHART  
INSTRUMENT (SID) - ICAO

KALUGA, RUSSIA  
GRABTSEVO  
RWY 31

TRANSITION ALT: 5000'  
TRANSITION HGT: (1340)



2 MAX IAS 410km/h

DME is required

**CLOSE-IN OBSTACLES:**  
DEPARTURE TRACK ← 314°  
NOT TO SCALE 724' Λ 724'  
RWY 13 THR

KALUGA TOWER 120.300

**WARNING**  
There are close-in obstacles.

BEARINGS AND TRACKS ARE MAGNETIC  
ALTITUDES AND ELEVATIONS IN FEET  
DISTANCES IN KILOMETRES

Alt set: -QNH(QFE on req);  
-hPa(mm on req).