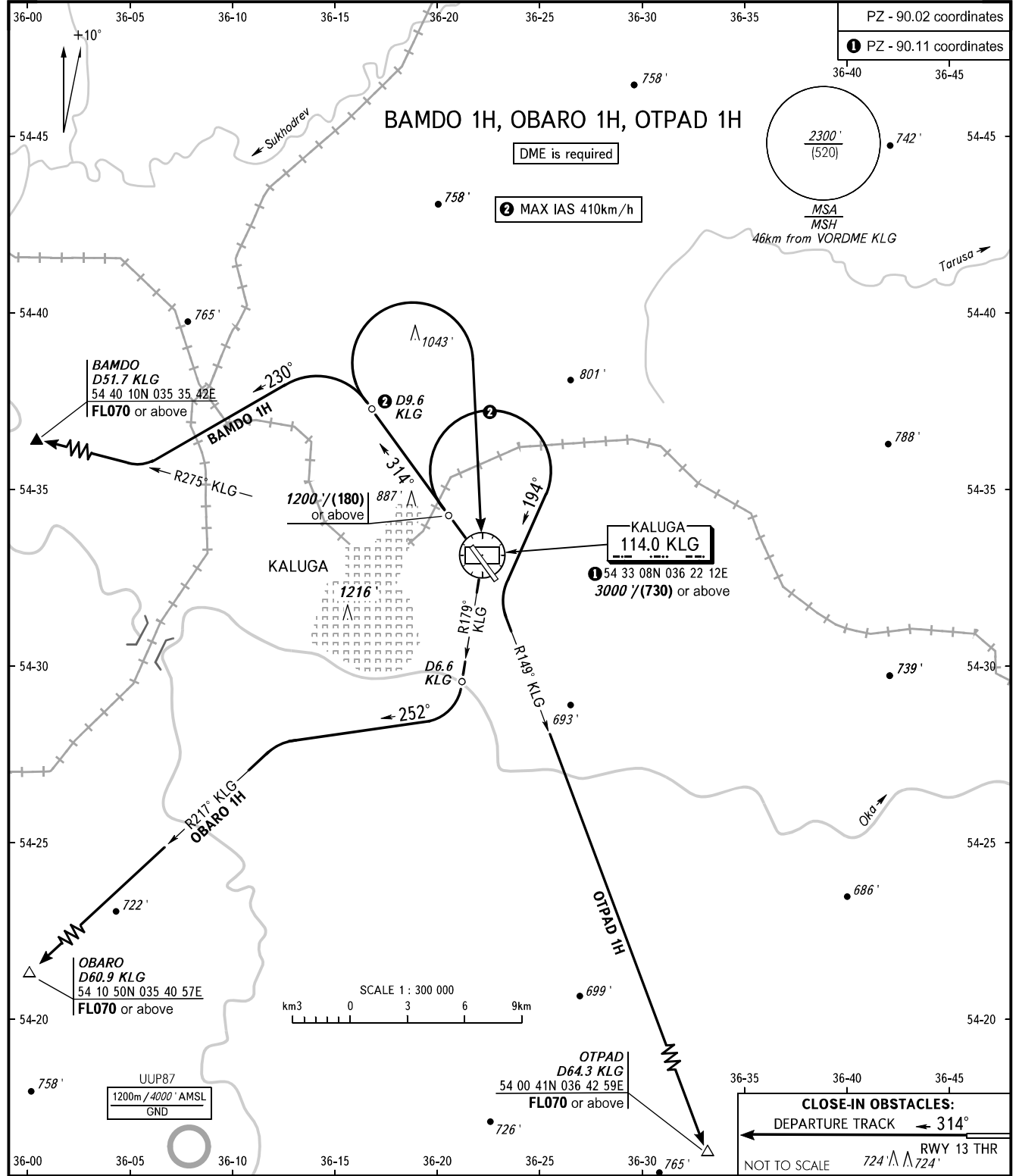


STANDARD DEPARTURE CHART
INSTRUMENT (SID) - ICAO

TRANSITION ALT: 5000'
TRANSITION HGT: (1340)

KALUGA, RUSSIA
GRABTSEVO
RWY 31



KALUGA TOWER 120.300

WARNING
There are close-in obstacles.

CLOSE-IN OBSTACLES:
DEPARTURE TRACK ← 314°
RWY 13 THR
NOT TO SCALE 724' / 724'

BEARINGS AND TRACKS ARE MAGNETIC
ALTITUDES AND ELEVATIONS IN FEET
DISTANCES IN KILOMETRES

Alt set: -QNH(QFE on req);
-hPa(mm on req).