

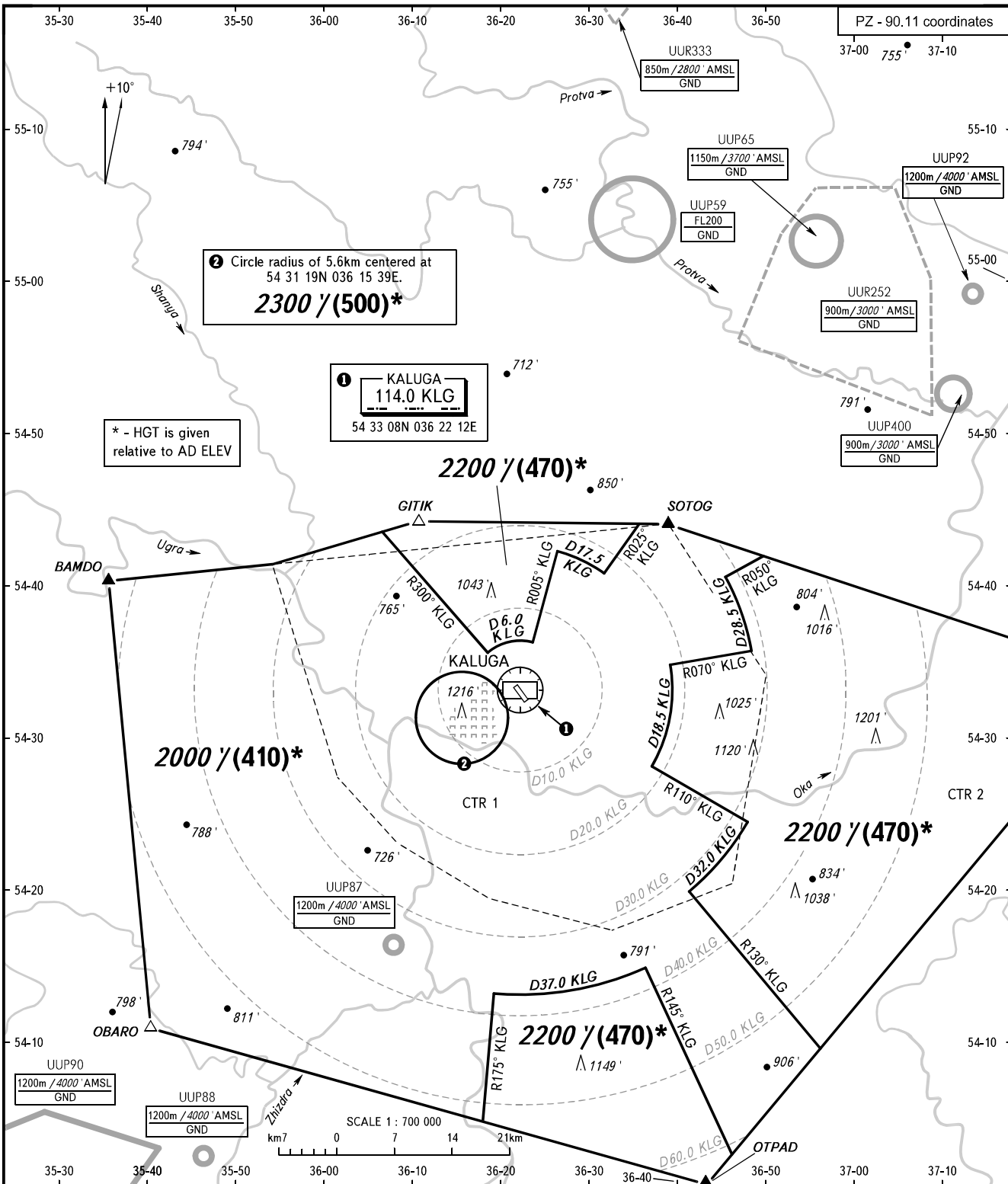
ATC SURVEILLANCE MINIMUM
ALTITUDE CHART- ICAO

ELEV
666'

TRANSITION ALT: **5000'**
TRANSITION HGT: **(1330)***

KALUGA, RUSSIA

GRABTSEVO



② Circle radius of 5.6km centered at
54 31 19N 036 15 39E.
2300 / (500)*

① KALUGA
114.0 KLG
54 33 08N 036 22 12E

* - HGT is given
relative to AD ELEV

KALUGA TOWER **120.300**

WARNING:
1. The chart may only be used for cross-checking of altitudes assigned while the aircraft is identified under radar control.
2. TEMPERATURE CORRECTION:
The altitude value of sectors is calculated for ISA conditions (15°C).
When vectoring is executed at a temperature of 0° C or below, the minimum vectoring altitudes must be corrected by altimeter temperature correction.
3. COMMUNICATION FAILURE: As in accordance with the procedures described in AIP.

BEARINGS AND TRACKS ARE MAGNETIC
ALTITUDES AND ELEVATIONS IN FEET
DISTANCES IN KILOMETRES

Alt set: -QNH(QFE on req);
-hPa(mm on req).

CHANGE: Sectors boundaries