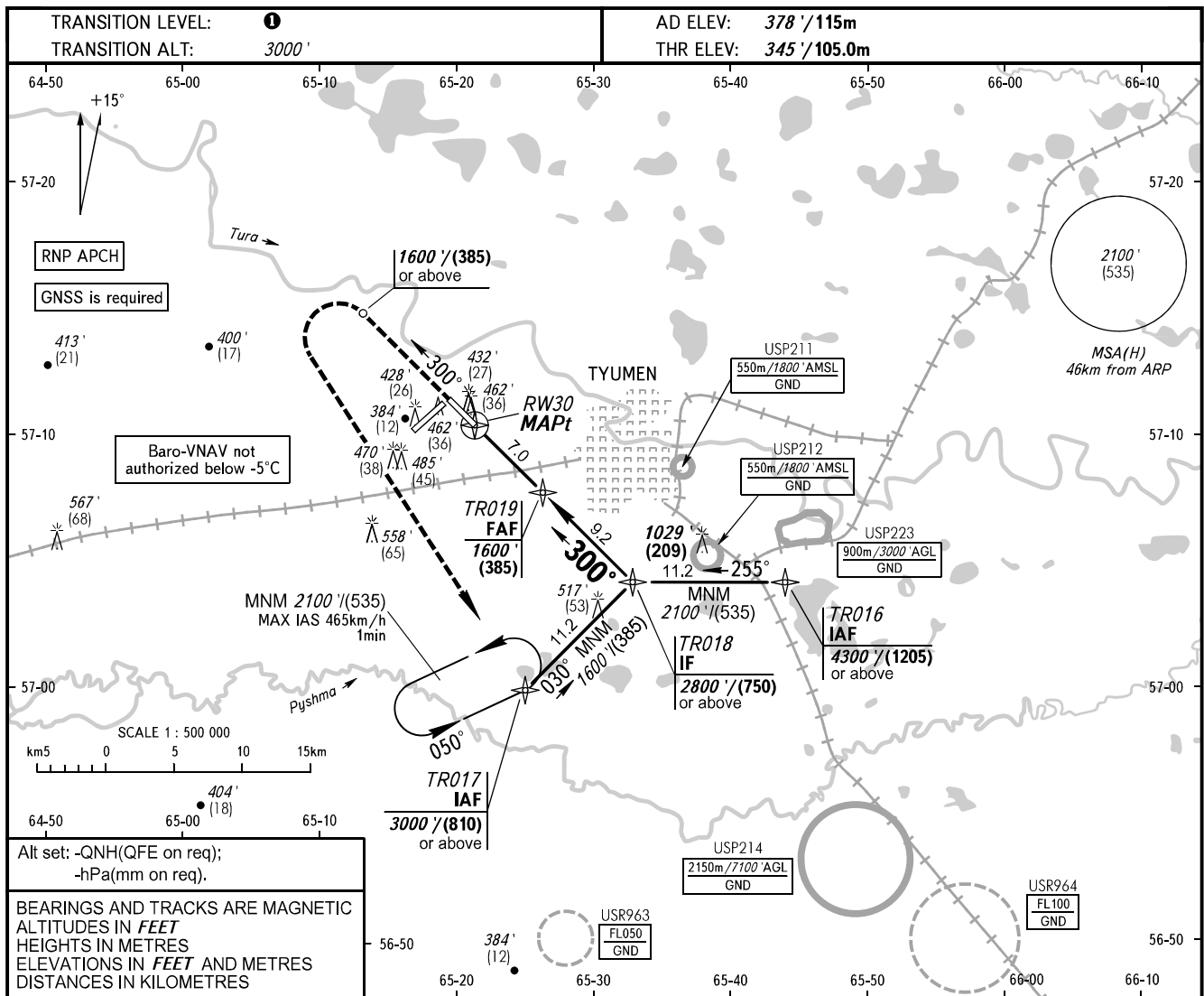


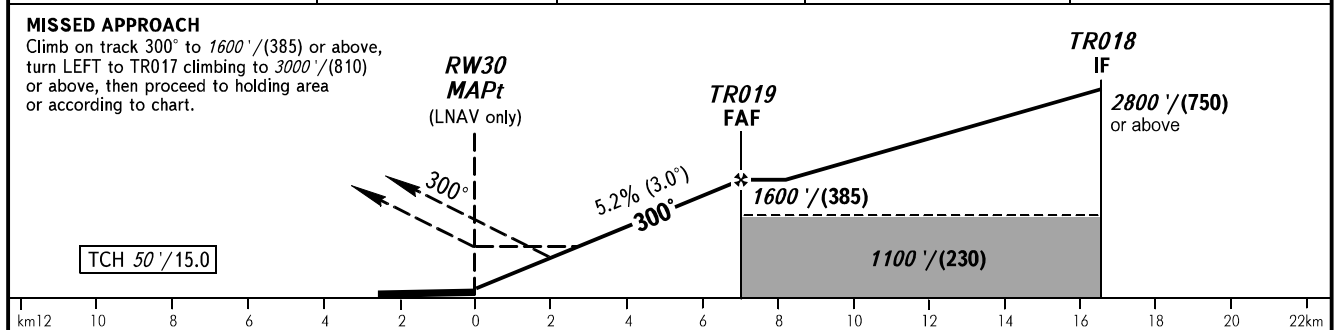
**INSTRUMENT
APPROACH
CHART - ICAO**

RADAR **126.100**
START **118.200**

TYUMEN, RUSSIA
ROSHCHINO
RNP RWY 30



DIST to RW30	2.0	4.0	6.0	7.0
ALTITUDE	740'	1080'	1420'	1600'



OCA(H)		A	B	C	D	① TRANSITION LEVEL:							
Straight-in Approach	LNAV	720' (380') (115)	720' (380') (115)	720' (380') (115)	720' (380') (115)	- FL040 when QNH is 1013 hPa (760mm mercury column) or above;							
	LNAV/VNAV	610' (260') (85)	620' (270') (85)	630' (280') (90)	640' (290') (90)	- FL050 when QNH is 977 hPa (733mm mercury column) or above, but less than 1013 hPa (760mm mercury column);							
Circling		780' (410') (125)	870' (500') (150)	970' (600') (185)	1070' (690') (215)	- FL060 when QNH is less than 977 hPa (733mm mercury column).							
GROUND SPEED		km/h	150	180	210	240	270	300	330	360	390	420	450
RATE OF DESCENT		m/s	2.2	2.6	3.0	3.5	3.9	4.3	4.8	5.2	5.6	6.1	6.5
		ft/min	427	512	597	640	682	768	853	938	1024	1103	1182

CHANGE: Heading