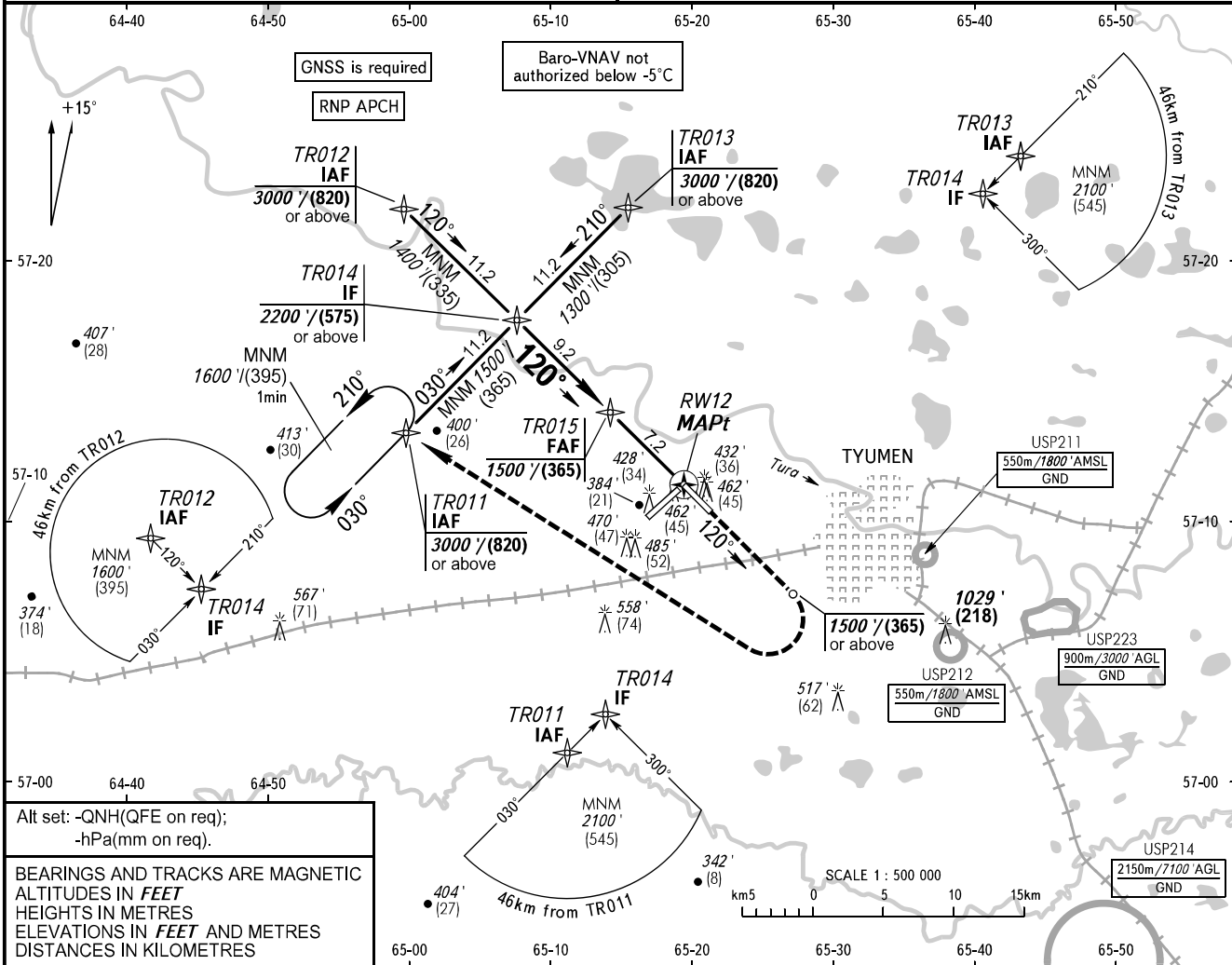


**INSTRUMENT
APPROACH
CHART - ICAO**

RADAR **126.100**
START **118.200**

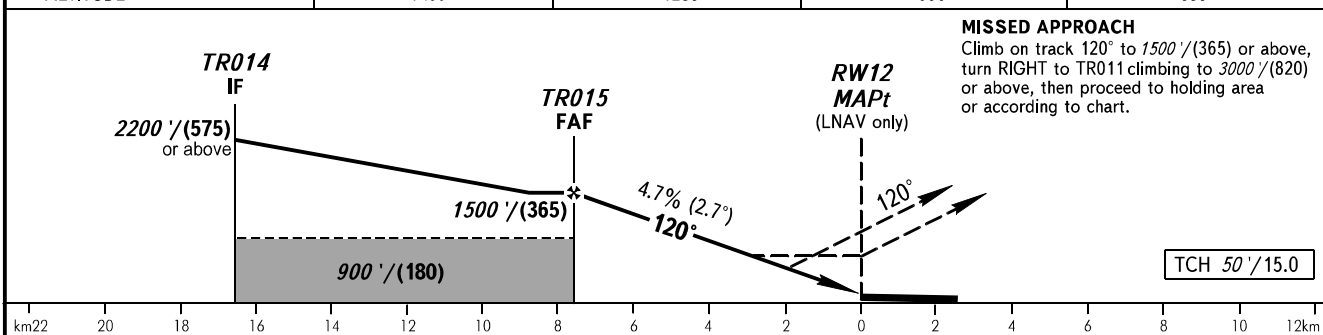
TYUMEN, RUSSIA
ROSHCHINO
RNP RWY 12

TRANSITION LEVEL: **3000'**
TRANSITION ALT: **3000'**
AD ELEV: **378' / 115m**
THR ELEV: **315' / 96.0m**



Alt set: -QNH(QFE on req);
-hPa(mm on req).
BEARINGS AND TRACKS ARE MAGNETIC
ALTITUDES IN FEET
HEIGHTS IN METRES
ELEVATIONS IN FEET AND METRES
DISTANCES IN KILOMETRES

DIST to RW12	7.0	6.0	4.0	2.0
ALTITUDE	1450'	1230'	990'	680'



OCA(H)		A	B	C	D	① TRANSITION LEVEL:							
Straight-in Approach	LNAV	660' (350') (110)	660' (350') (110)	660' (350') (110)	660' (350') (110)	- FL040 when QNH is 1013 hPa (760mm mercury column) or above;							
	LNAV/VNAV	540' (220') (70)	550' (240') (75)	560' (240') (75)	580' (260') (85)	- FL050 when QNH is 977 hPa (733mm mercury column) or above, but less than 1013 hPa (760mm mercury column);							
Circling		780' (410') (125)	870' (500') (150)	970' (600') (185)	1070' (690') (215)	- FL060 when QNH is less than 977 hPa (733mm mercury column).							
GROUND SPEED		km/h	150	180	210	240	270	300	330	360	390	420	450
RATE OF DESCENT		m/s	2.0	2.4	2.7	3.1	3.5	3.9	4.3	4.7	5.1	5.5	5.9
		ft/min	385	463	540	617	694	771	848	925	1002	1079	1156