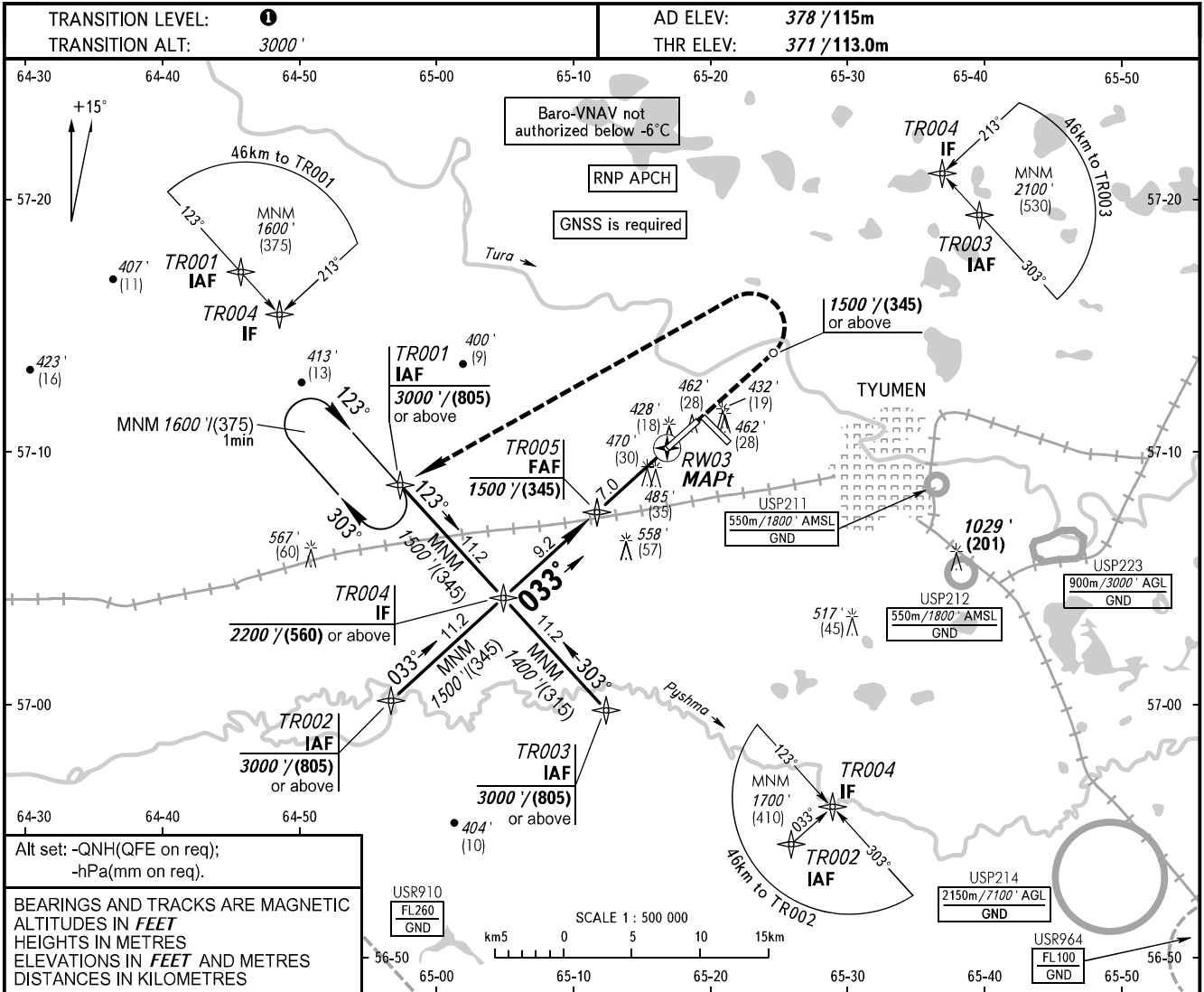


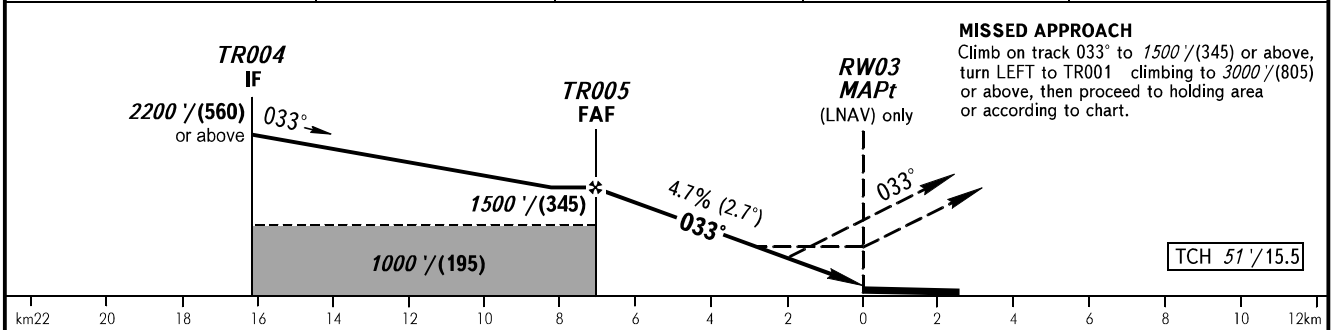
**INSTRUMENT
APPROACH
CHART - ICAO**

RADAR **126.100**
START **118.200**

**TYUMEN, RUSSIA
ROSHCHINO
RNP RWY 03**



DIST to RW03	7.0	6.0	4.0	2.0
ALTITUDE	1500'	1350'	1040'	730'



OCA(H)		A	B	C	D	TRANSITION LEVEL: - FL040 when QNH is 1013 hPa (760mm mercury column) or above; - FL050 when QNH is 977 hPa (733mm mercury column) or above, but less than 1013 hPa (760mm mercury column); - FL060 when QNH is less than 977 hPa (733mm mercury column). WARNING Turn before MAPt is PROHIBITED.							
Straight-in Approach	LNAV	710' (330') (104)	710' (330') (104)	710' (330') (104)	710' (330') (104)								
	LNAV/VNAV	590' (220') (70)	600' (230') (70)	610' (240') (75)	620' (250') (80)								
Circling		780' (410') (125)	870' (500') (150)	970' (600') (185)	1070' (690') (215)								
GROUND SPEED		km/h	150	180	210	240	270	300	330	360	390	420	450
RATE OF DESCENT		m/s	2.0	2.4	2.7	3.1	3.5	3.9	4.3	4.7	5.1	5.5	5.9
		ft/min	385	463	540	617	694	771	848	925	1002	1079	1156