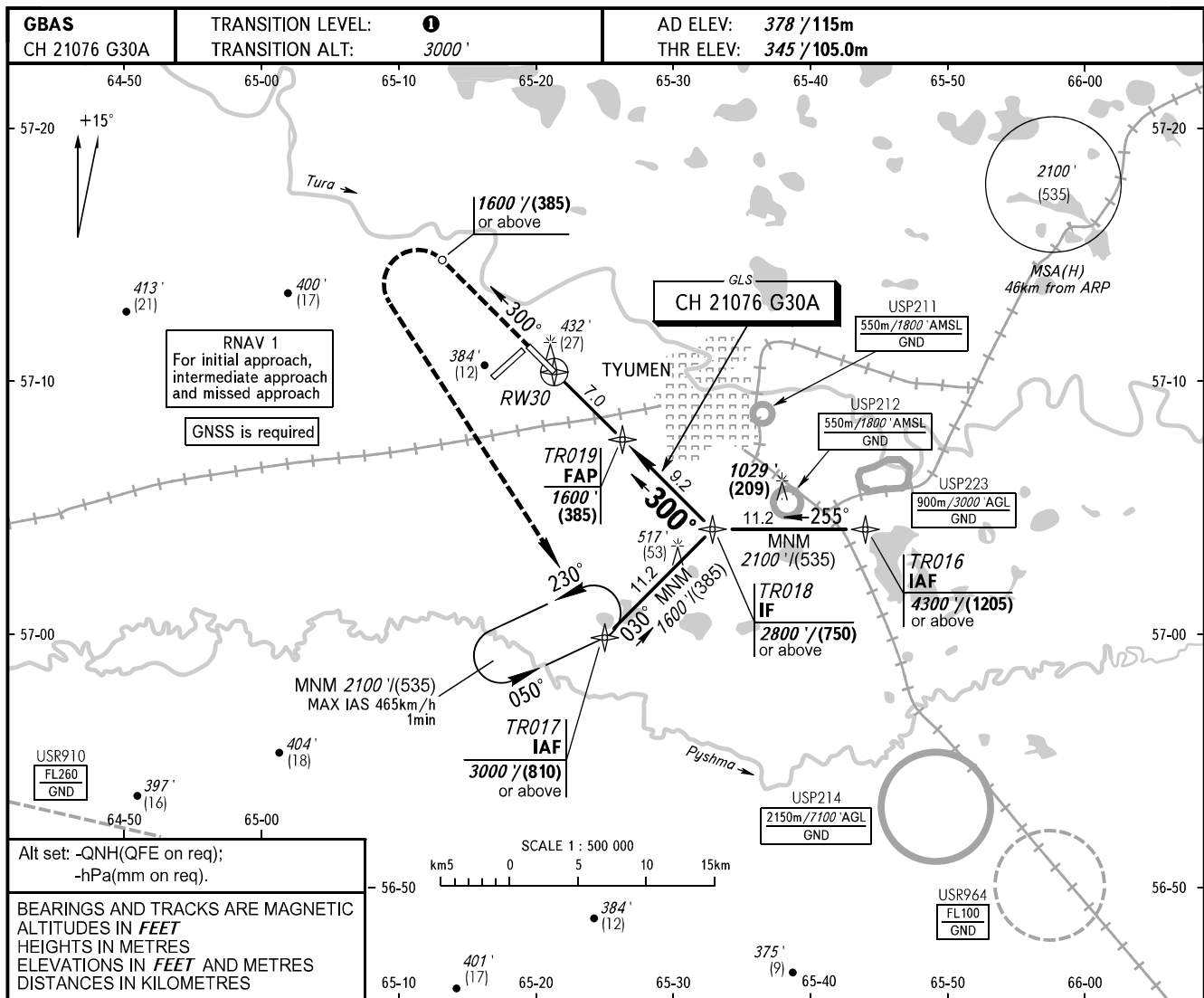


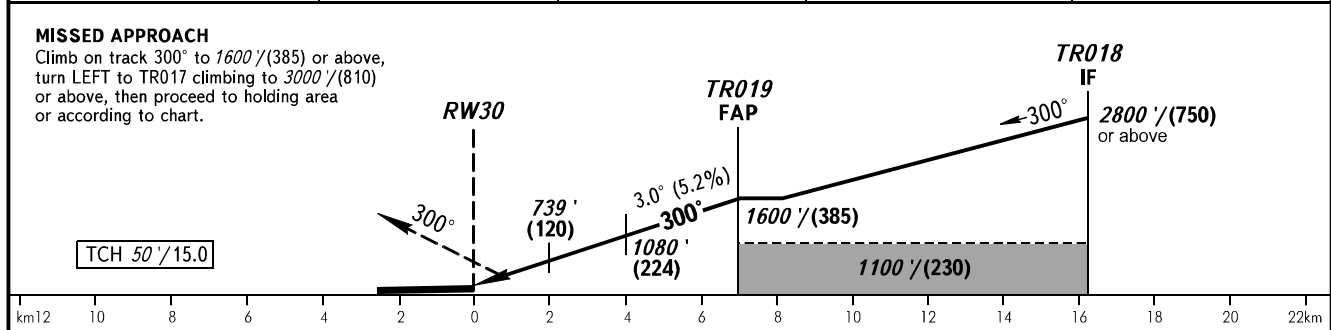
**INSTRUMENT
APPROACH
CHART - ICAO**

RADAR **126.100**
START **118.200**

TYUMEN, RUSSIA
ROSHCHINO
GLS RWY 30



DIST to RW30	2.0	4.0	6.0	7.0
ALTITUDE	739'	1080'	1419'	1591'



OCA(H)		A	B	C	D	① TRANSITION LEVEL:							
Straight-in Approach	CAT I	530' (180') (55)	540' (190') (60)	580' (240') (75)	600' (250') (78)	- FL040 when QNH is 1013 hPa (760mm mercury column) or above;							
		- FL050 when QNH is 977 hPa (733mm mercury column) or above, but less than 1013 hPa (760mm mercury column);											
Circling		780' (410') (125)	870' (500') (150)	970' (600') (185)	1070' (690') (215)	- FL060 when QNH is less than 977 hPa (733mm mercury column).							
GROUND SPEED		km/h	150	180	210	240	270	300	330	360	390	420	450
RATE OF DESCENT		m/s	2.2	2.6	3.0	3.5	3.9	4.3	4.8	5.2	5.6	6.1	6.5
		ft/min	427	512	597	640	682	768	853	938	1024	1103	1182