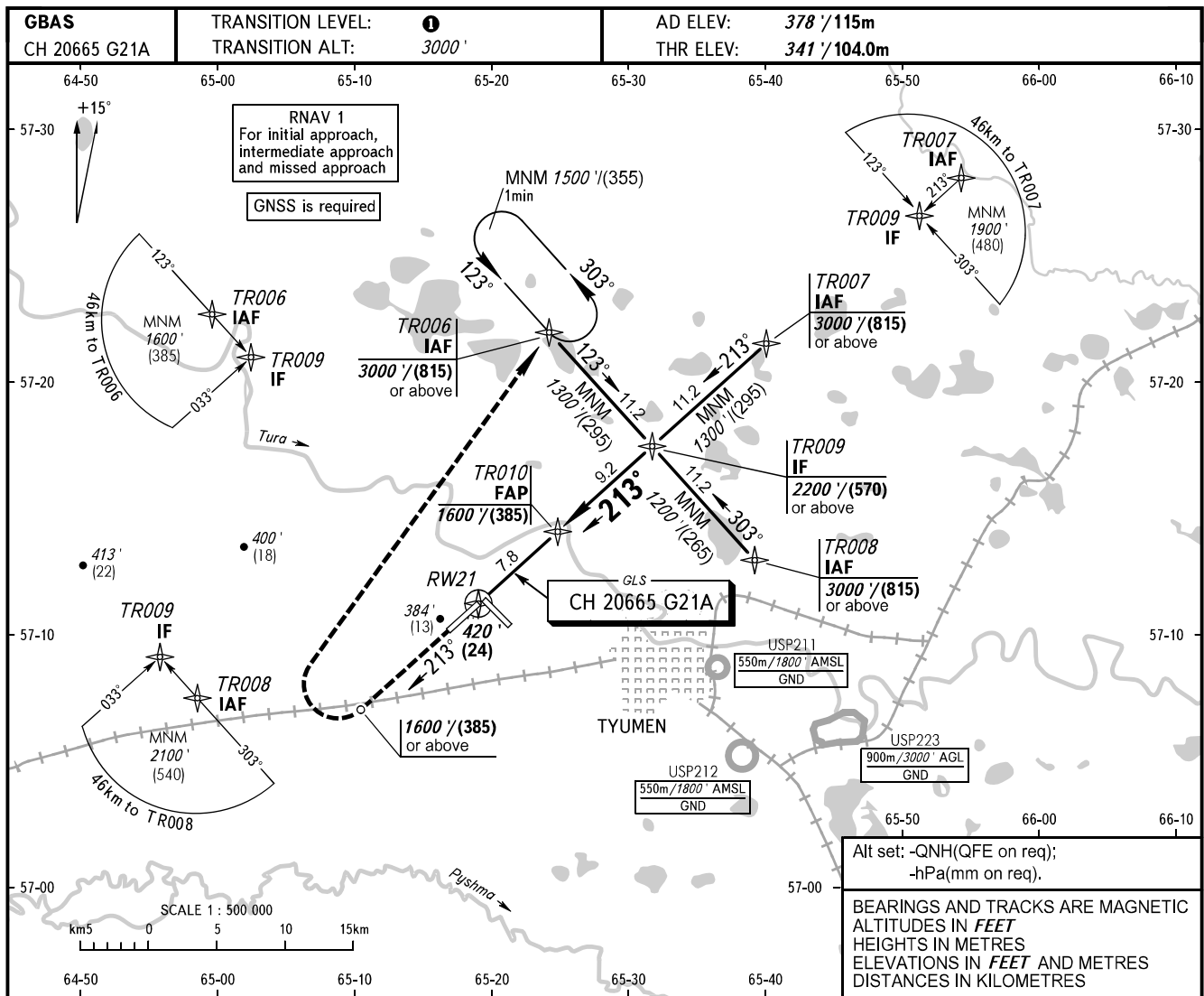


**INSTRUMENT
APPROACH
CHART - ICAO**

**TYUMEN, RUSSIA
ROSHCHINO
GLS RWY 21**

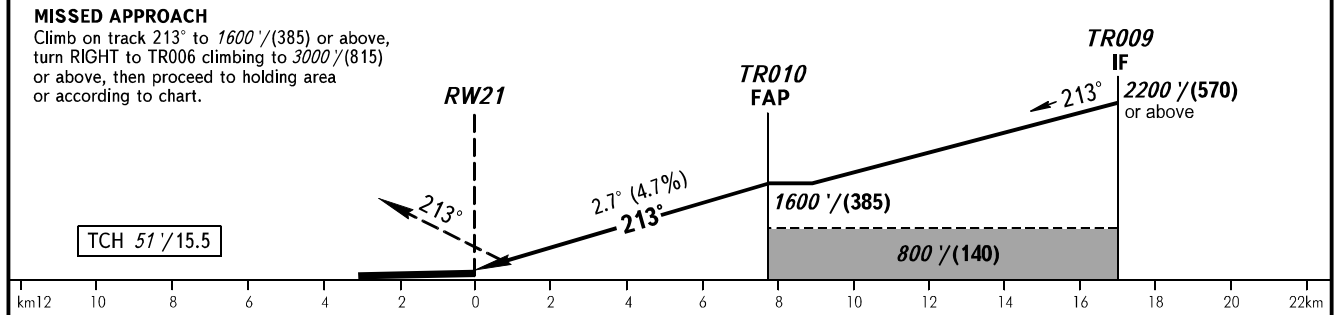
RADAR	126.100
START	118.200



Alt set: -QNH(QFE on req);
-hPa(mm on req).

BEARINGS AND TRACKS ARE MAGNETIC
ALTITUDES IN FEET
HEIGHTS IN METRES
ELEVATIONS IN FEET AND METRES
DISTANCES IN KILOMETRES

DIST to RW21	2.0	4.0	6.0	8.0
ALTITUDE	701'	1009'	1317'	1600'



MISSED APPROACH													
Climb on track 213° to 1600' (385) or above, turn RIGHT to TR006 climbing to 3000' (815) or above, then proceed to holding area or according to chart.													
OCA(H)		A	B	C	D	① TRANSITION LEVEL:							
Straight-in Approach	CAT I	537' (196')	549' (208')	558' (217')	567' (226')	- FL040 when QNH is 1013 hPa (760mm mercury column) or above;							
		(60)	(64)	(67)	(69)	- FL050 when QNH is 977 hPa (733mm mercury column) or above, but less than 1013 hPa (760mm mercury column);							
Circling		780' (410')	870' (500')	970' (600')	1070' (690')	- FL060 when QNH is less than 977 hPa (733mm mercury column).							
		(125)	(150)	(185)	(215)								
GROUND SPEED		km/h	150	180	210	240	270	300	330	360	390	420	450
RATE OF DESCENT		m/s	2.0	2.4	2.7	3.1	3.5	3.9	4.3	4.7	5.1	5.5	5.9
		ft/min	385	463	540	617	694	771	848	925	1002	1079	1156