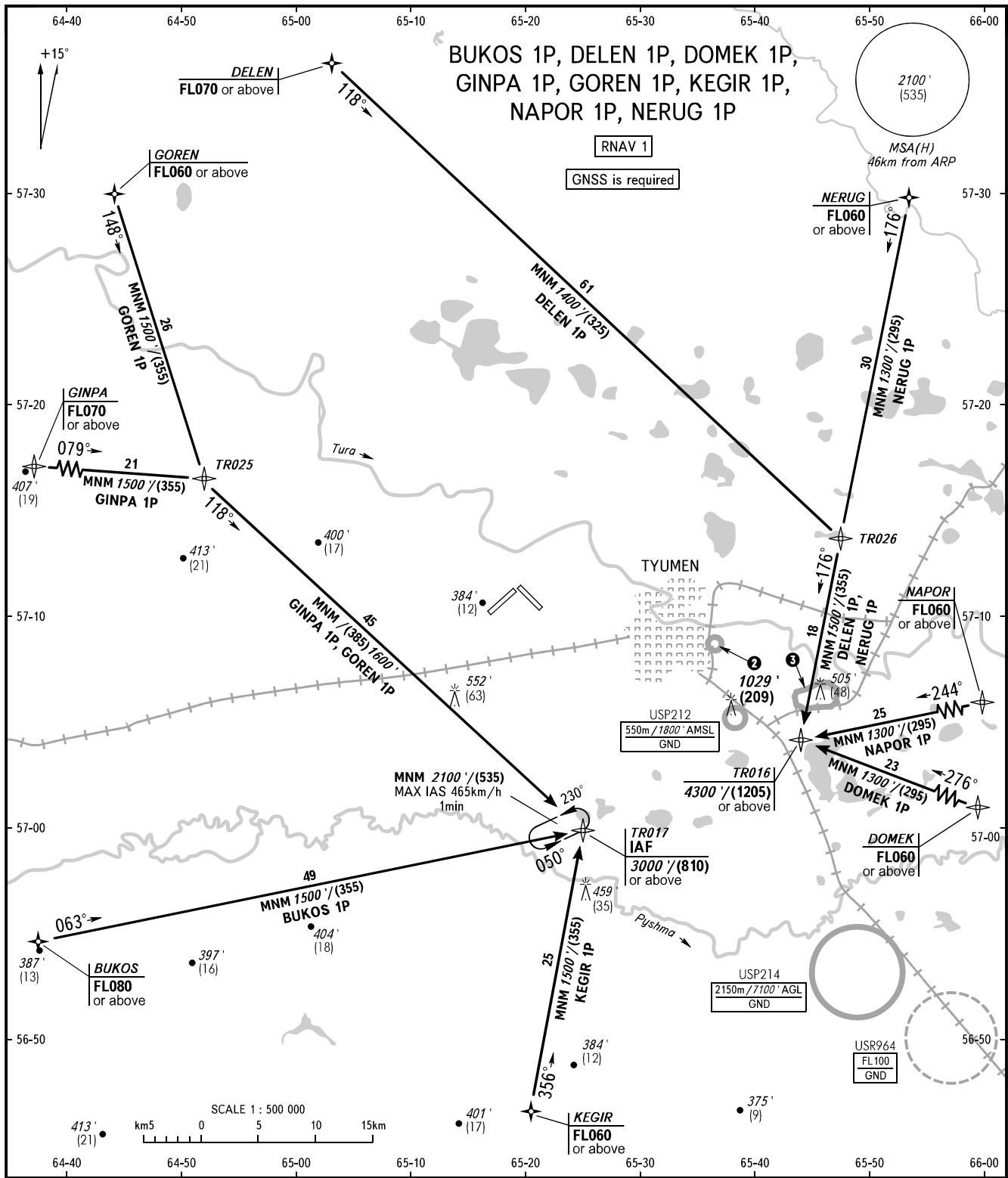


STANDARD ARRIVAL CHART
INSTRUMENT (STAR) - ICAO

TYUMEN, RUSSIA
ROSHCHINO
RNAV RWY 30

TRANSITION
LEVEL: ①



RADAR 126.100
START 118.200

- ① TRANSITION LEVEL:
- FL040 when QNH is 1013 hPa (760mm mercury column) or above;
 - FL050 when QNH is 977 hPa (733mm mercury column) or above, but less than 1013 hPa (760mm mercury column);
 - FL060 when QNH is less than 977 hPa (733mm mercury column).

② USP211
550m / 1800' AMSL
GND

③ USP223
900m / 3000' AGL
GND

BEARINGS AND TRACKS ARE MAGNETIC	Alt set: -QNH(QFE on req);
ALTITUDES IN FEET	-hPa(mm on req).
HEIGHTS IN METRES	
ELEVATION IN FEET AND METRES	
DISTANCES IN KILOMETRES	