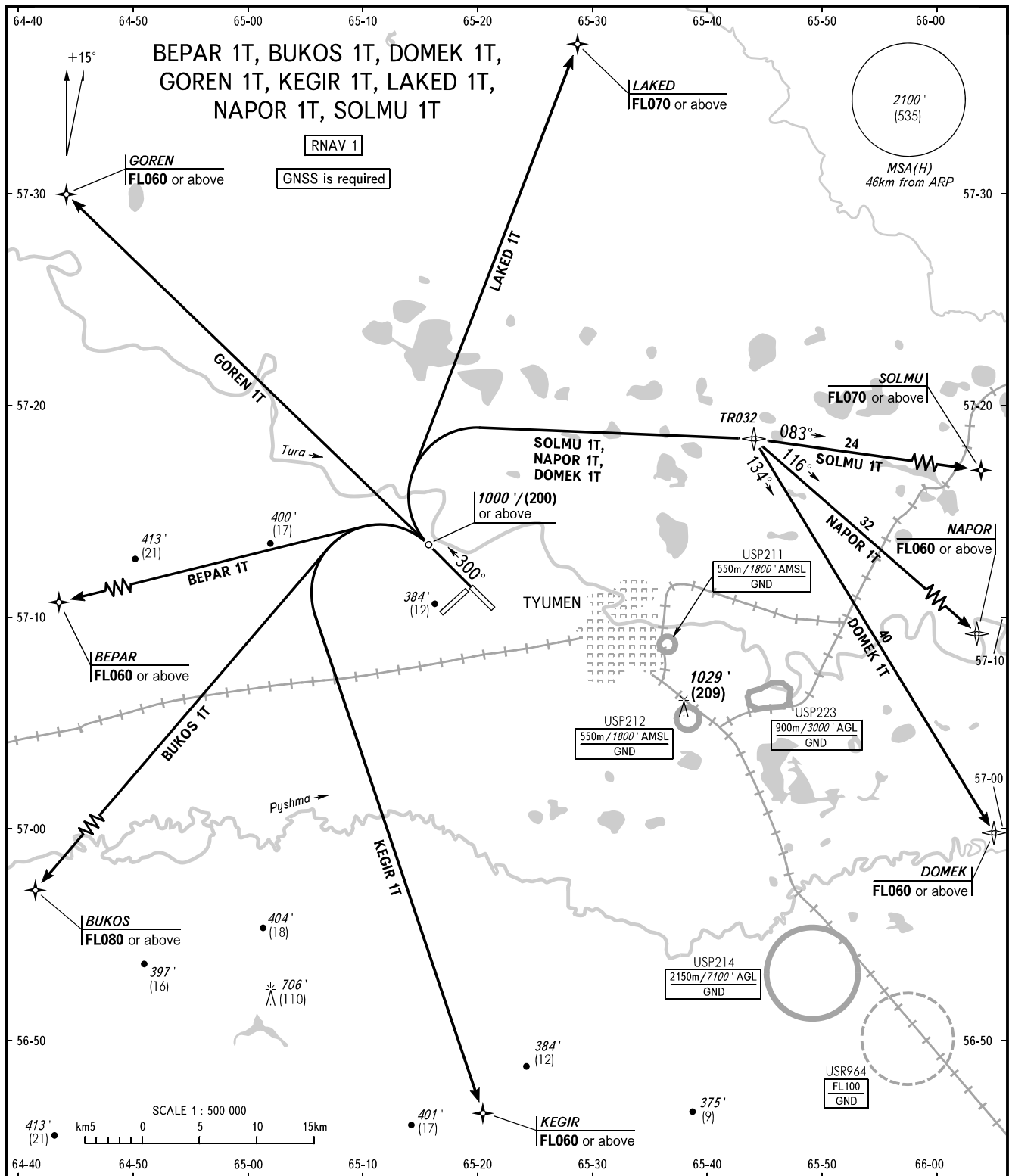


STANDARD DEPARTURE CHART
INSTRUMENT (SID) - ICAO

TRANSITION
ALTITUDE: 3000'

TYUMEN, RUSSIA
ROSHCHINO
RNAV RWY 30



START 118.200
RADAR 126.100

WARNING:

1. Turn before passing DER is PROHIBITED.
2. The minimum climb gradients (required due to the airspace structure only) are as follows:
 - 3.8% up to FL080 for SID BUKOS 1T;
 - 3.5% up to FL060 for SID GOREN 1T;
 - 3.9% up to FL070 for SID LAKED 1T.

BEARINGS AND TRACKS ARE MAGNETIC
ALTITUDES IN FEET
HEIGHTS IN METRES
ELEVATION IN FEET AND METRES
DISTANCES IN KILOMETRES

Alt set: -QNH(QFE on req);
-hPa(mm on req).