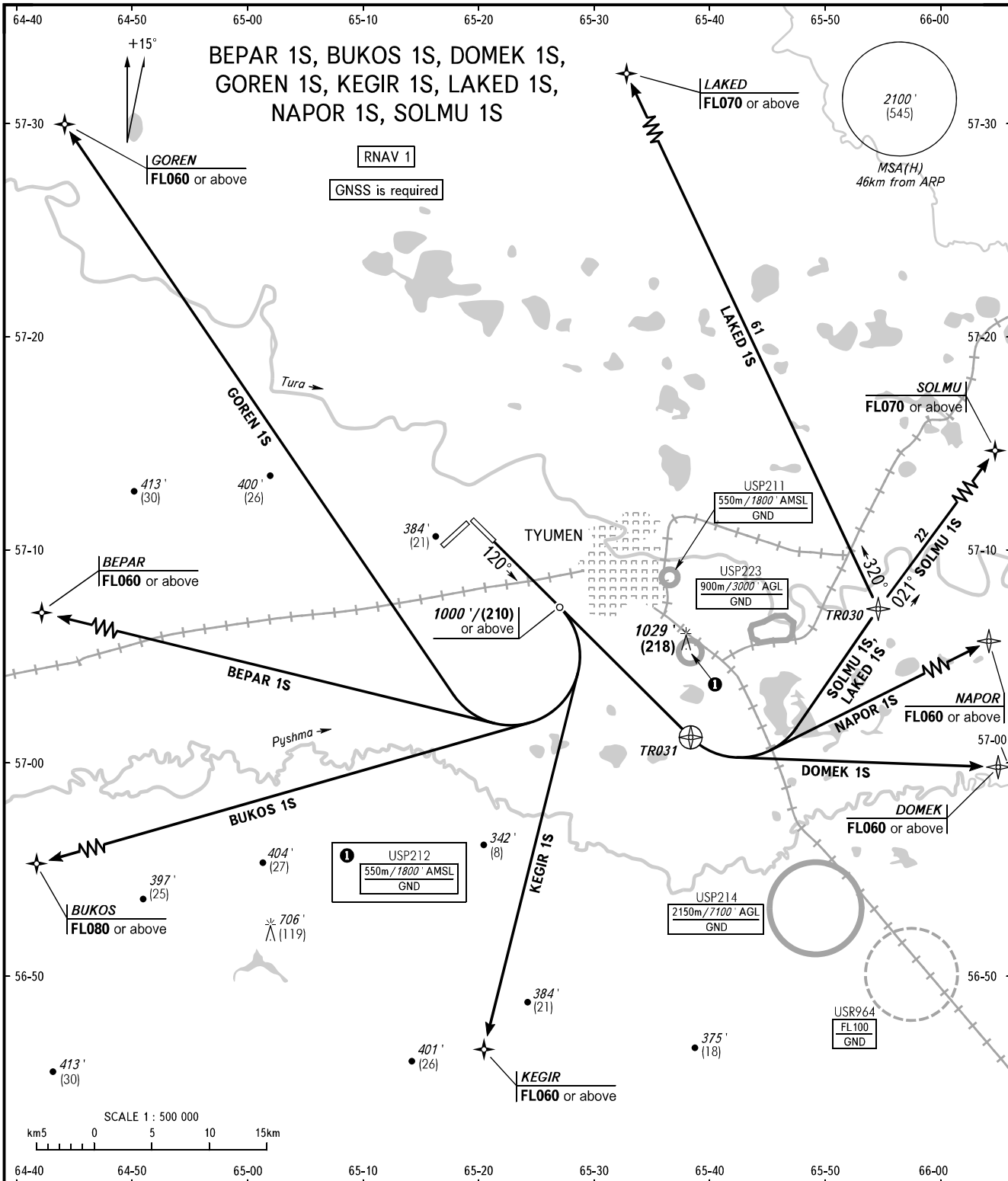


STANDARD DEPARTURE CHART
INSTRUMENT (SID) - ICAO

TRANSITION
ALTITUDE: 3000'

TYUMEN, RUSSIA
ROSHCHINO
RNAV RWY 12



START 118.200
RADAR 126.100

WARNING:

1. Turn before passing DER is PROHIBITED.
2. The minimum climb gradients (required due to the airspace structure only) are as follows:
 - 4.0% up to FL040 for SID LAKED 1S, NAPOR 1S, SOLMU 1S;
 - 3.7% up to FL060 for SID KEGIR 1S;
 - 3.5% up to FL080 for SID BUKOS 1S.

BEARINGS AND TRACKS ARE MAGNETIC
ALTITUDES IN **FEET**
HEIGHTS IN METRES
ELEVATION IN **FEET** AND METRES
DISTANCES IN KILOMETRES

Alt set: -QNH(QFE on req);
-hPa(mm on req).

CHANGE: MSA(H)