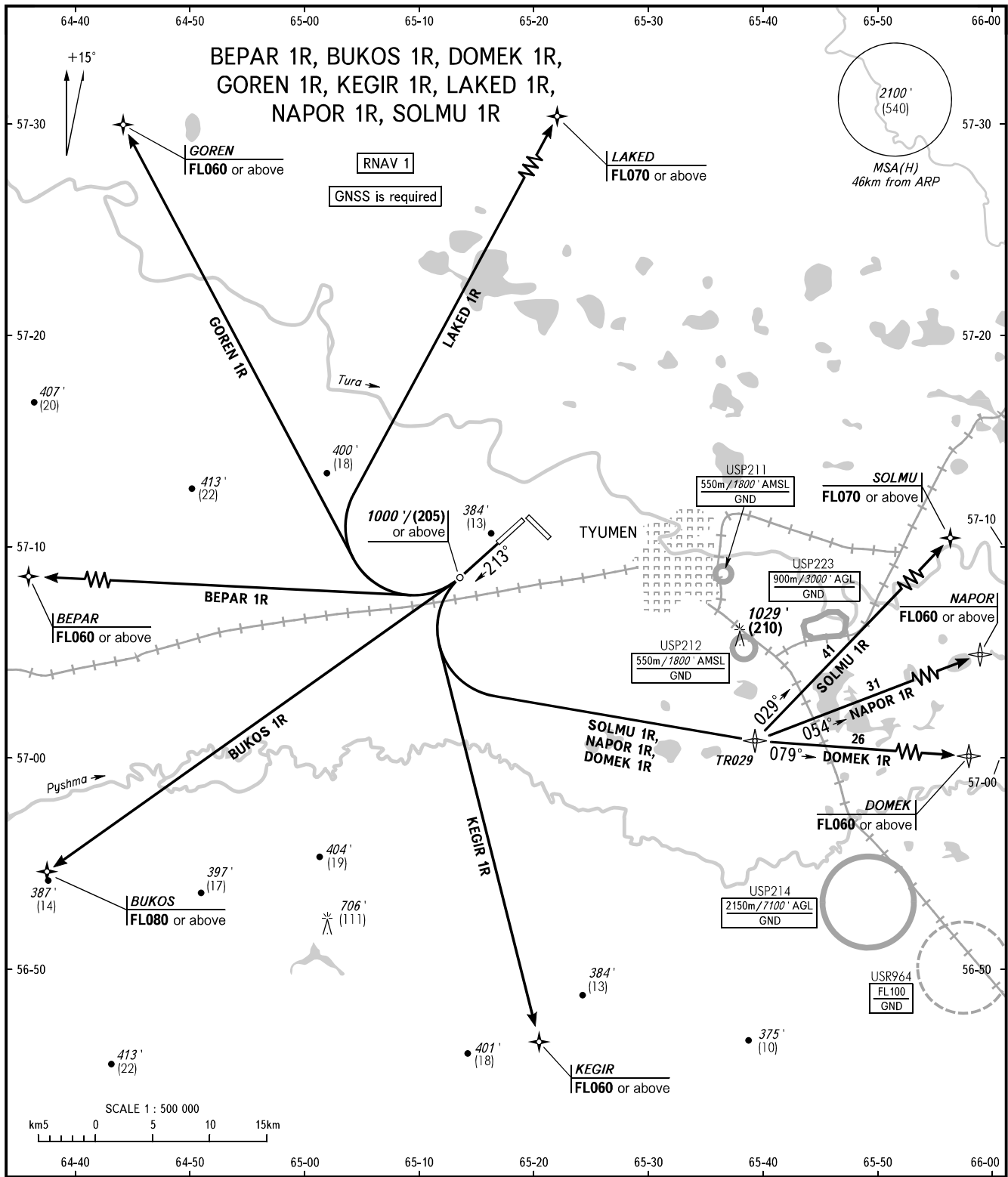


STANDARD DEPARTURE CHART
INSTRUMENT (SID) - ICAO

TRANSITION
ALTITUDE: 3000'

TYUMEN, RUSSIA
ROSHCHINO
RNAV RWY 21



START	118.200	WARNING: 1. Turn before DER is PROHIBITED. 2. There are close-in obstacles (trees) located to the right of take-off heading at DIST 263 - 649m from DER with MAX ELEV 450'. 3. The minimum climb gradients required due to the airspace structure only are as follows: - 3.6% up to FL060 for SID KEGIR 1R; - 4.8% up to FL080 for SID BEPAR 1R.
RADAR	126.100	
BEARINGS AND TRACKS ARE MAGNETIC ALTITUDES IN FEET HEIGHTS IN METRES ELEVATION IN FEET AND METRES DISTANCES IN KILOMETRES		Alt set: -QNH(QFE on req); -hPa(mm on req).

CHANGE: Heading