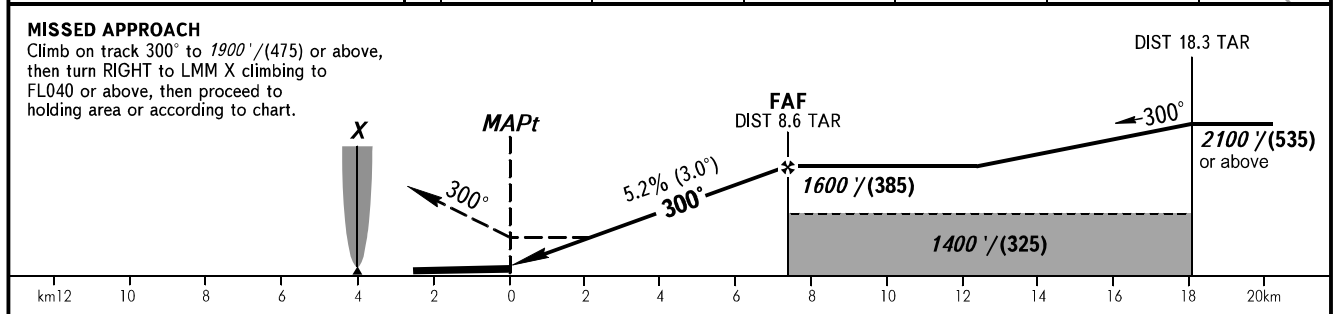
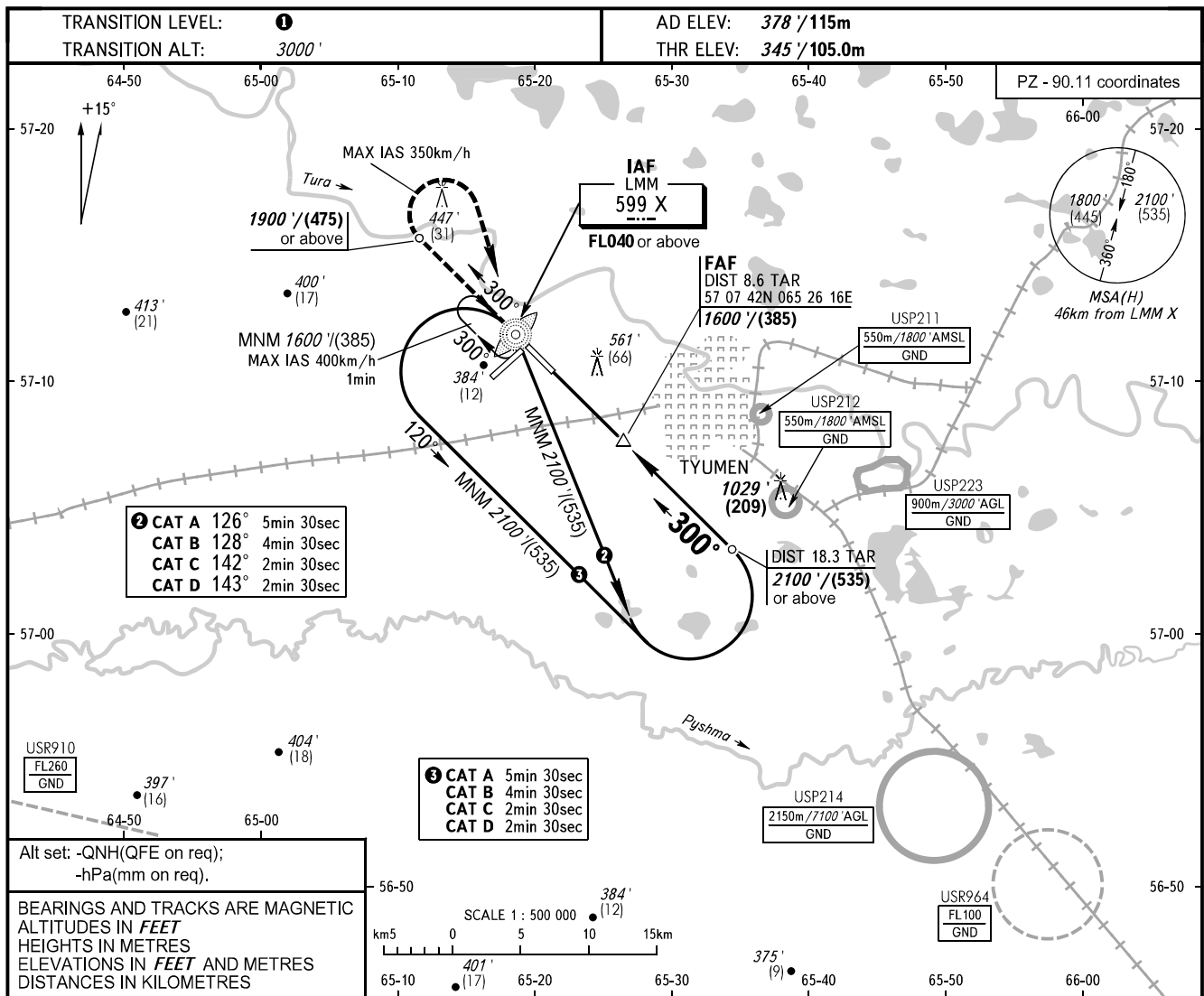


**INSTRUMENT  
APPROACH  
CHART - ICAO**

**TYUMEN, RUSSIA  
ROSHCHINO  
NDB RWY 30**

RADAR **126.100**  
START **118.200**



OCA(H)	A	B	C	D								
Straight-in Approach	810' (470') (142)	810' (470') (142)	810' (470') (142)	810' (470') (142)								
Circling	810' (470') (142)	870' (500') (150)	970' (600') (185)	1070' (690') (215)								
GROUND SPEED	km/h	150	180	210	240	270	300	330	360	390	420	450
FAF - MAPt 7009m	min:sec	2:48	2:20	2:00	1:45	1:33	1:24	1:16	1:10	1:05	1:00	0:56
RATE OF DESCENT	m/s	2.2	2.6	3.0	3.5	3.9	4.3	4.8	5.2	5.6	6.1	6.5
	ft/min	427	512	597	640	682	768	853	938	1024	1103	1182

① **TRANSITION LEVEL:**  
- FL040 when QNH is 1013 hPa (760mm mercury column) or above;  
- FL050 when QNH is 977 hPa (733mm mercury column) or above, but less than 1013 hPa (760mm mercury column);  
- FL060 when QNH is less than 977 hPa (733mm mercury column).

**WARNING**  
Turn before MAPt is PROHIBITED.

CHANGE: OCA(H)