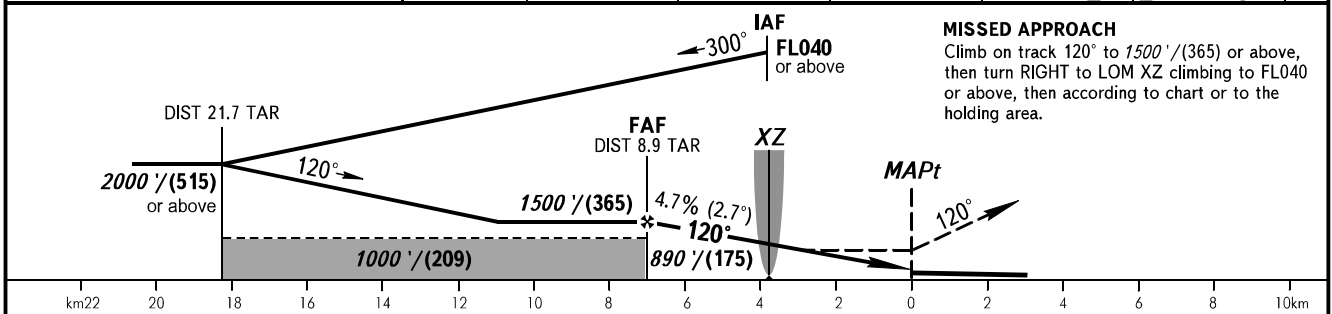
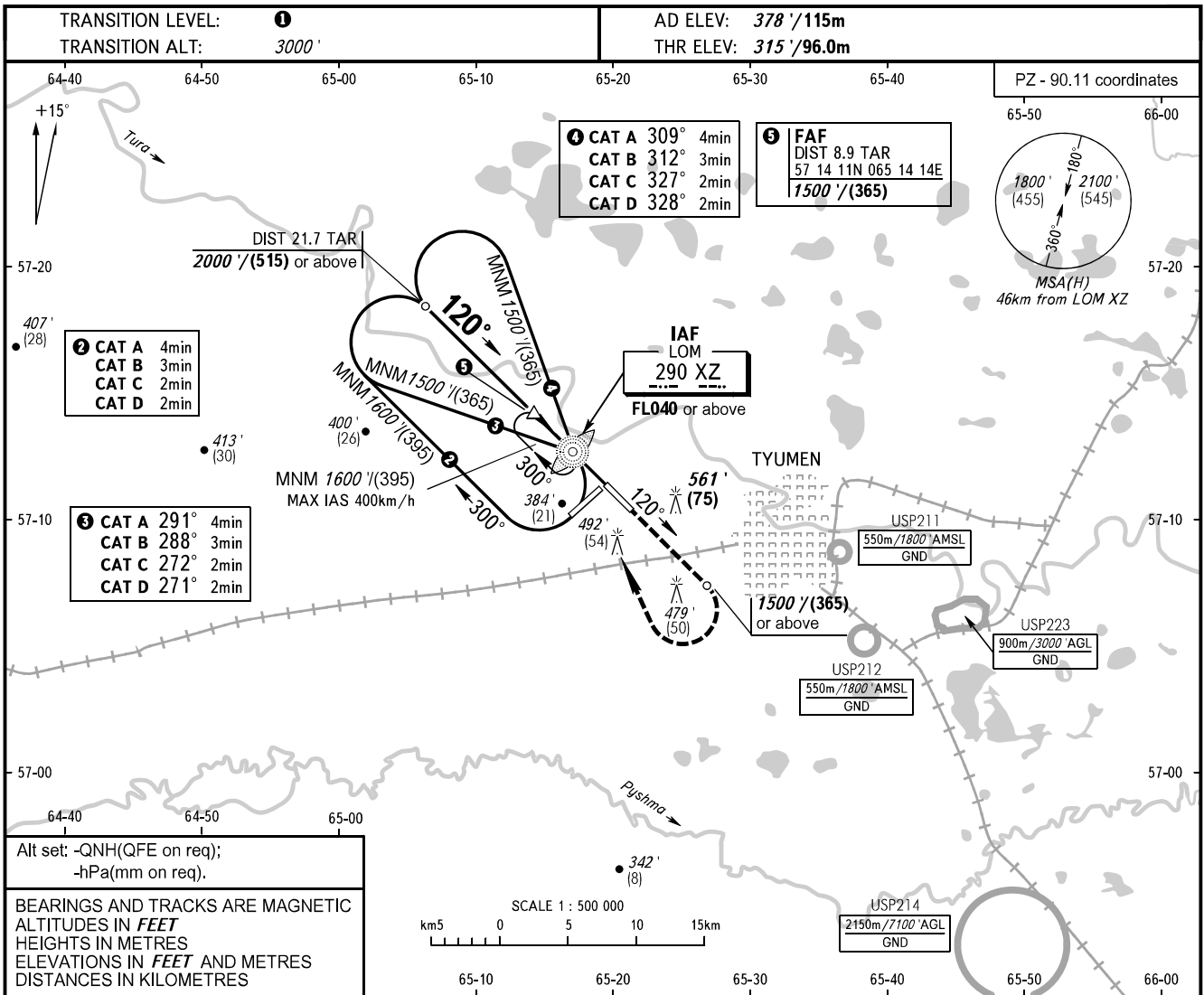


**INSTRUMENT
APPROACH
CHART - ICAO**

RADAR 126.100
START 118.200

**TYUMEN, RUSSIA
ROSHCHINO
NDB RWY 12**



OCA(H)	A	B	C	D	① TRANSITION LEVEL: - FL040 when QNH is 1013 hPa (760mm mercury column) or above; - FL050 when QNH is 977 hPa (733mm mercury column) or above, but less than 1013 hPa (760mm mercury column); - FL060 when QNH is less than 977 hPa (733mm mercury column).							
Straight-in Approach	680' (370') (112)	680' (370') (112)	680' (370') (112)	680' (370') (112)								
Circling	780' (410') (125)	870' (500') (150)	970' (600') (185)	1070' (690') (215)	NOTE Turn before MAPt is PROHIBITED.							
GROUND SPEED	km/h	150	180	210	240	270	300	330	360	390	420	450
FAF - MAPt 7360m	min:sec	2:57	2:27	2:06	1:50	1:39	1:28	1:20	1:14	1:08	1:03	0:59
RATE OF DESCENT	m/s	2.0	2.4	2.7	3.1	3.5	3.9	4.3	4.7	5.1	5.5	5.9
	ft/min	385	463	540	617	694	771	848	925	1002	1079	1156

CHANGE: NIL