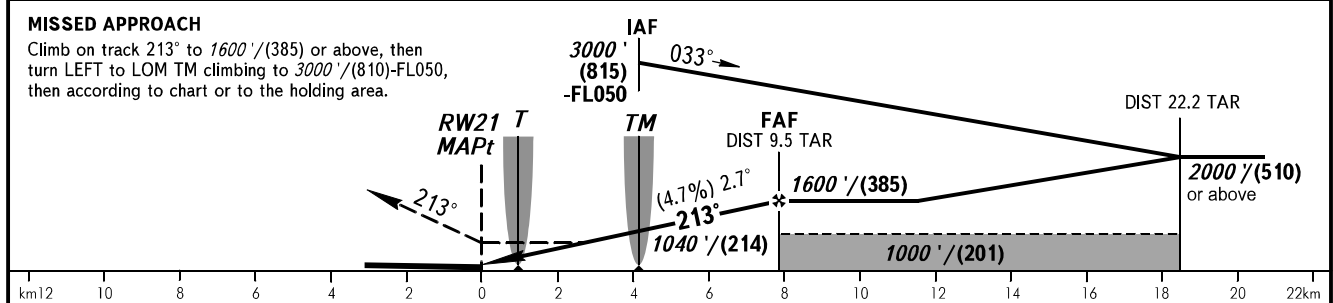
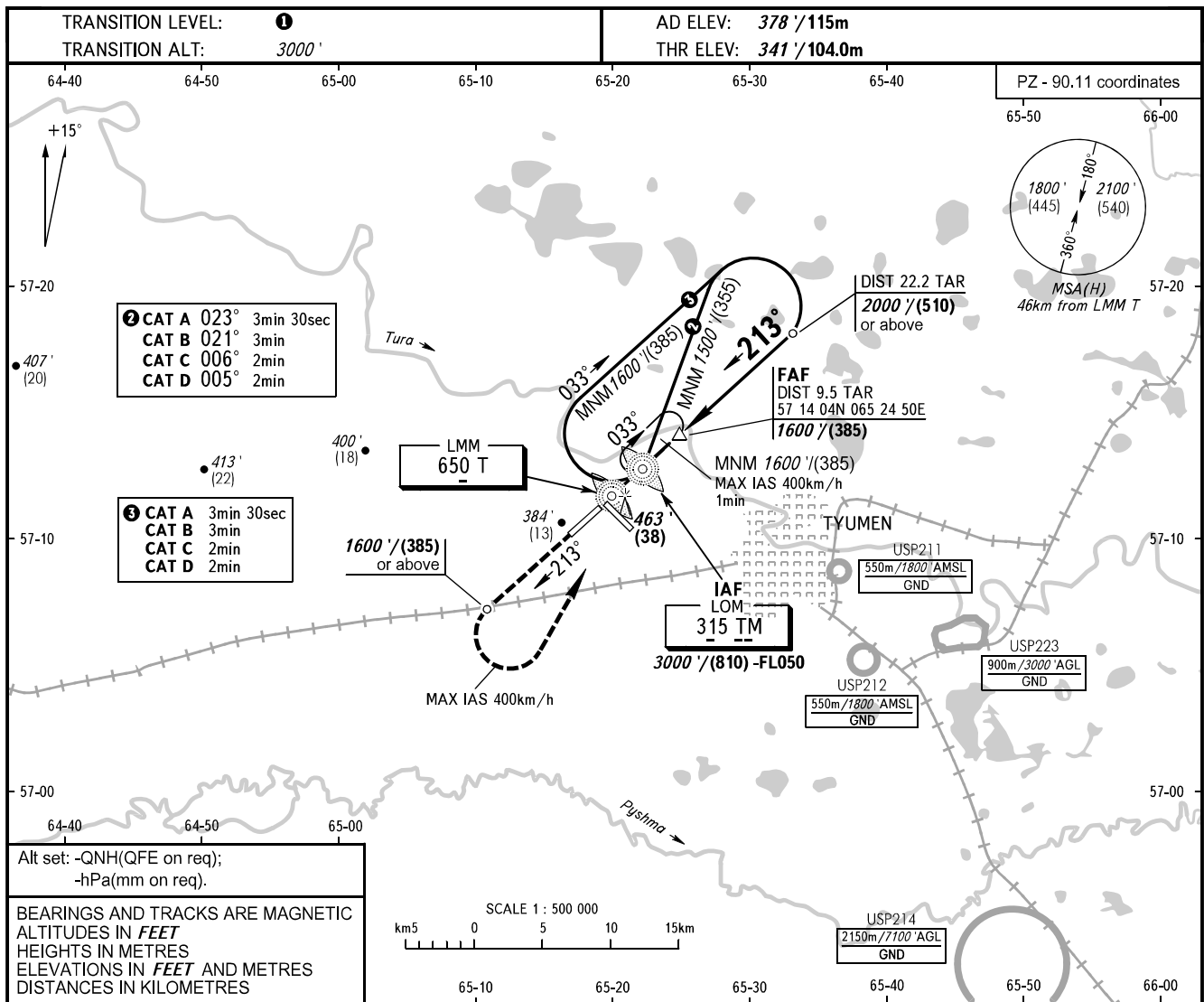


**INSTRUMENT
APPROACH
CHART - ICAO**

**TYUMEN, RUSSIA
ROSHCHINO
NDB RWY 21**

RADAR 126.100
START 118.200



OCA(H)	A	B	C	D	1 TRANSITION LEVEL: - FL040 when QNH is 1013 hPa (760mm mercury column) or above; - FL050 when QNH is 977 hPa (733mm mercury column) or above, but less than 1013 hPa (760mm mercury column); - FL060 when QNH is less than 977 hPa (733mm mercury column). WARNING Turn before MAPt is PROHIBITED.							
Straight-in Approach	710' (370') (115)	710' (370') (115)	710' (370') (115)	710' (370') (115)								
Circling	780' (410') (125)	870' (500') (150)	970' (600') (185)	1070' (690') (215)								
GROUND SPEED	km/h	150	180	210	240	270	300	330	360	390	420	450
FAF - MAPt 7840m	min:sec	3:08	2:37	2:14	1:58	1:45	1:34	1:24	1:18	1:12	1:07	1:03
RATE OF DESCENT	m/s	2.0	2.4	2.7	3.1	3.5	3.9	4.3	4.7	5.1	5.5	5.9
	ft/min	385	463	540	617	694	771	848	925	1002	1079	1156