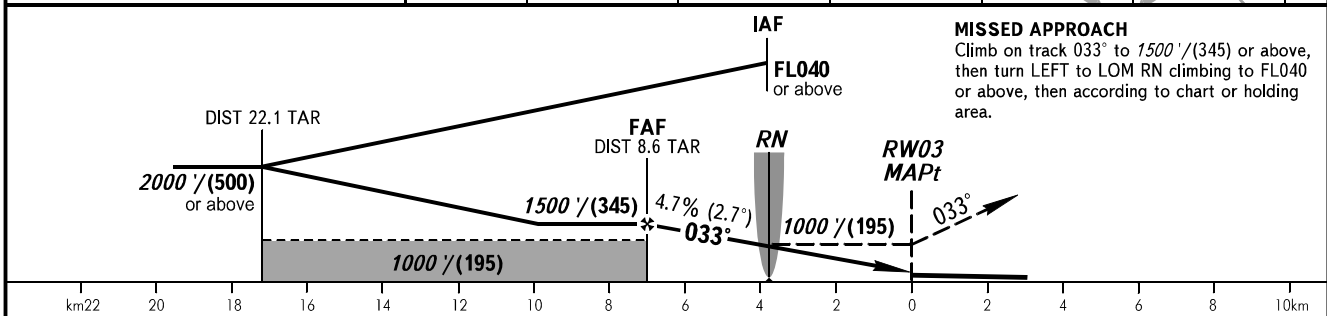
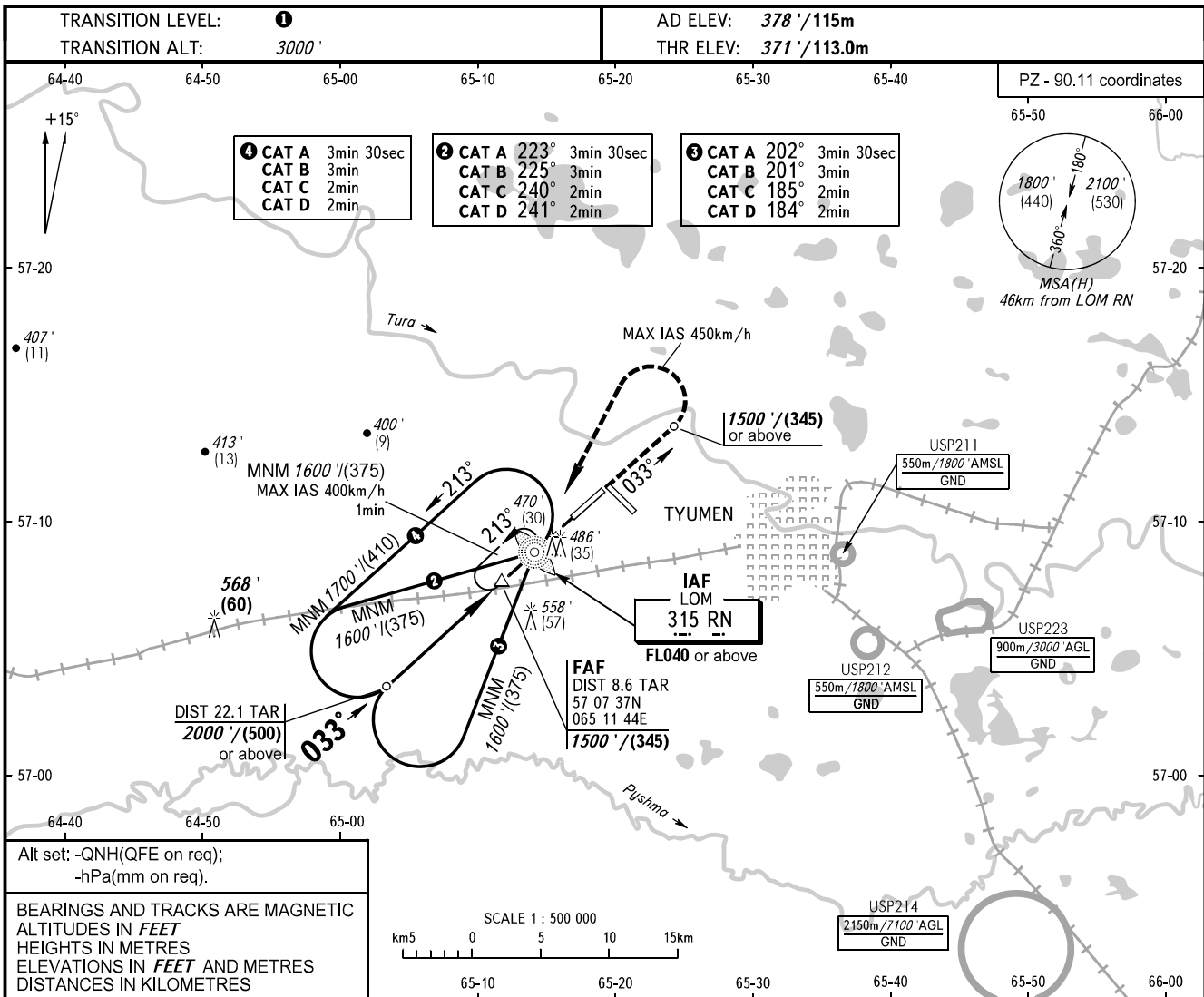


**INSTRUMENT
APPROACH
CHART - ICAO**

RADAR 126.100
START 118.200

**TYUMEN, RUSSIA
ROSHCHINO
NDB RWY 03**



OCA(H)		A	B	C	D	① TRANSITION LEVEL:											
Straight-in Approach		720' (350') (107)	720' (350') (107)	720' (350') (107)	720' (350') (107)	- FL040 when QNH is 1013 hPa (760mm mercury column) or above;											
						- FL050 when QNH is 977 hPa (733mm mercury column) or above, but less than 1013 hPa (760mm mercury column);											
Circling		780' (410') (125)	870' (500') (150)	970' (600') (185)	1070' (690') (215)	- FL060 when QNH is less than 977 hPa (733mm mercury column).											
GROUND SPEED		km/h	150	180	210	240	270	300	330	360	390	420	450				
FAF - MAPt 7000m		min:sec	2:48	2:20	2:00	1:45	1:33	1:24	1:16	1:10	1:05	1:00	0:56				
RATE OF DESCENT		m/s	2.0	2.4	2.7	3.1	3.5	3.9	4.3	4.7	5.1	5.5	5.9				
		ft/min	385	463	540	617	694	771	848	925	1002	1079	1156				

WARNING
Turn before MAPt is PROHIBITED.