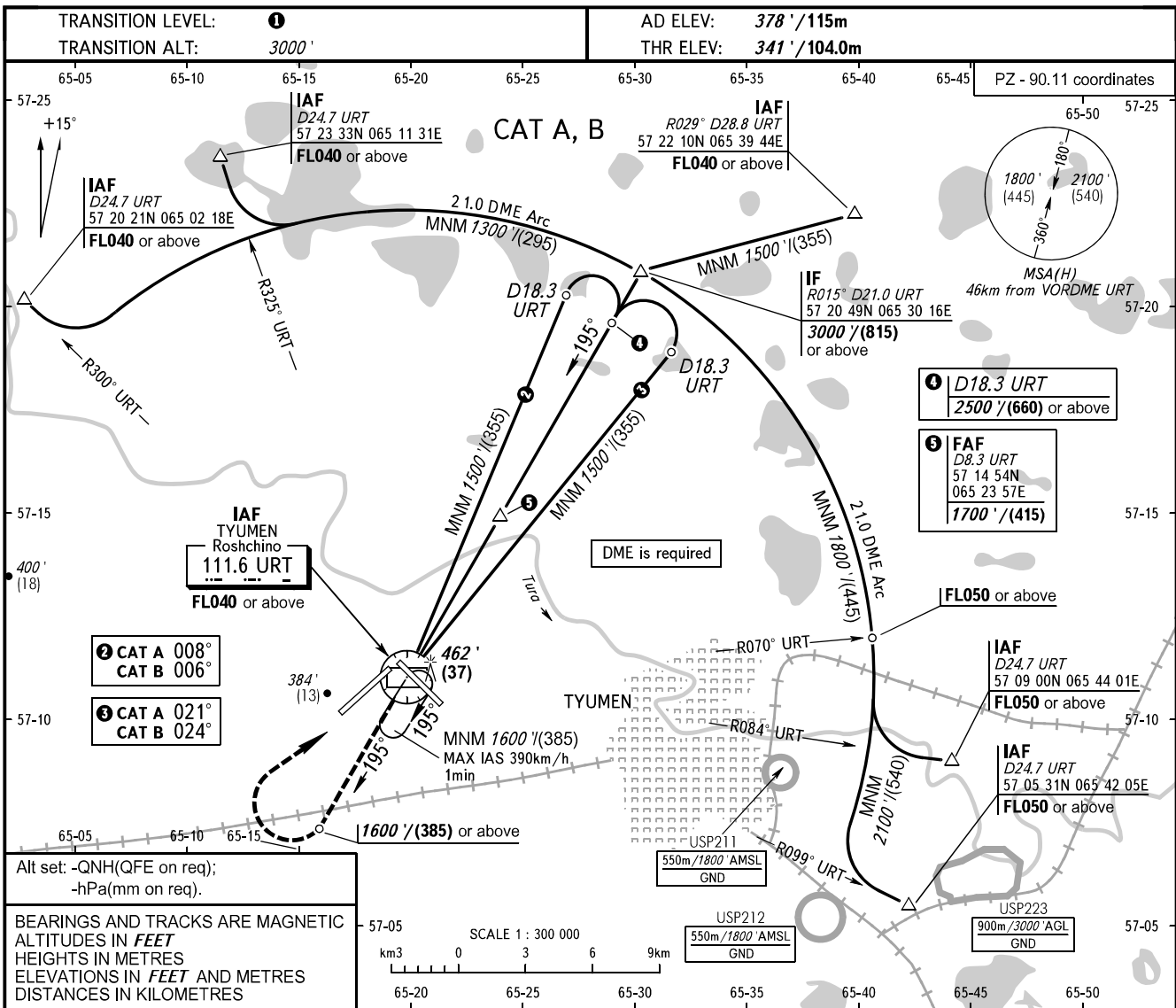


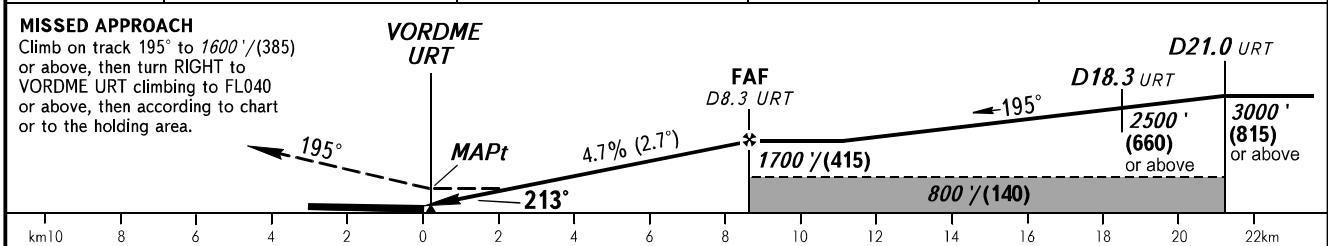
**INSTRUMENT
APPROACH
CHART - ICAO**

RADAR	126.100
START	118.200

**TYUMEN, RUSSIA
ROSHCHINO
VOR RWY 21**



DME URT	2.0	4.0	6.0	8.0
ALTITUDE	410'	820'	1230'	1640'



OCA(H)		A	B	C	D								
Straight-in Approach		730' (380') (120)	760' (410') (130)										
	Circling	780' (410') (125)	870' (500') (150)										
GROUND SPEED		km/h	150	180	210	240	270	300	330	360	390	420	450
RATE OF DESCENT		m/s	2.0	2.4	2.7	3.1	3.5	3.9	4.3	4.7	5.1	5.5	5.9
		ft/min	385	463	540	617	694	771	848	925	1002	1079	1156

1 TRANSITION LEVEL:
 - FL040 when QNH is 1013 hPa (760mm mercury column) or above;
 - FL050 when QNH is 977 hPa (733mm mercury column) or above, but less than 1013 hPa (760mm mercury column);
 - FL060 when QNH is less than 977 hPa (733mm mercury column).
WARNING:
 1. Turn before MAPt is prohibited.
 2. Final approach track is offset by 18° from the RCL.