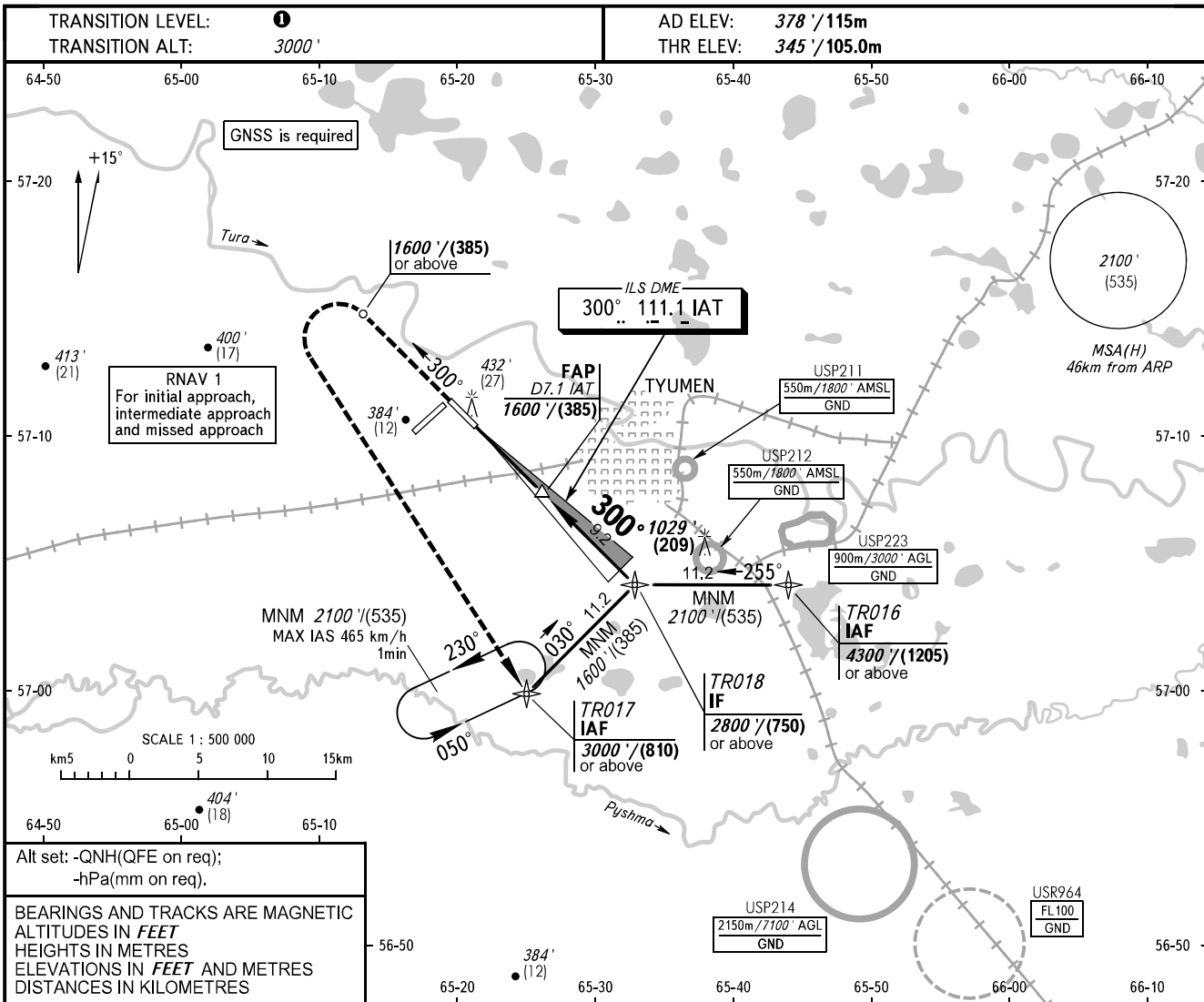


**INSTRUMENT
APPROACH
CHART - ICAO**

RADAR **126.100**
START **118.200**

**TYUMEN, RUSSIA
ROSHCHINO
ILS Z CAT I RWY 30**



DME IAT	2.0	4.0	6.0	7.0
ALTITUDE	739'	1080'	1421'	1593'

MISSED APPROACH
Climb on track 300° to 1600'/(385) or above, turn LEFT to TR017 climbing to 3000'/(810) or above, then proceed to holding area or according to chart.

WARNING
Zero range of DME IAT is indicated at RWY 30 THR.

RDH 53/16.0

OCA(H)		A	B	C	D	TRANSITION LEVEL: - FL040 when QNH is 1013 hPa (760mm mercury column) or above; - FL050 when QNH is 977 hPa (733mm mercury column) or above, but less than 1013 hPa (760mm mercury column); - FL060 when QNH is less than 977 hPa (733mm mercury column).							
Straight-in Approach	CAT I	523' (178')	535' (190')	580' (235')	592' (245')								
		(55)	(58)	(72)	(76)								
Circling		780' (410')	870' (500')	970' (600')	1070' (690')								
GROUND SPEED		km/h	150	180	210	240	270	300	330	360	390	420	450
RATE OF DESCENT		m/s	2.2	2.6	3.0	3.5	3.9	4.3	4.8	5.2	5.6	6.1	6.5
		ft/min	427	512	597	640	682	768	853	938	1024	1103	1182

CHANGE: MSA(H)