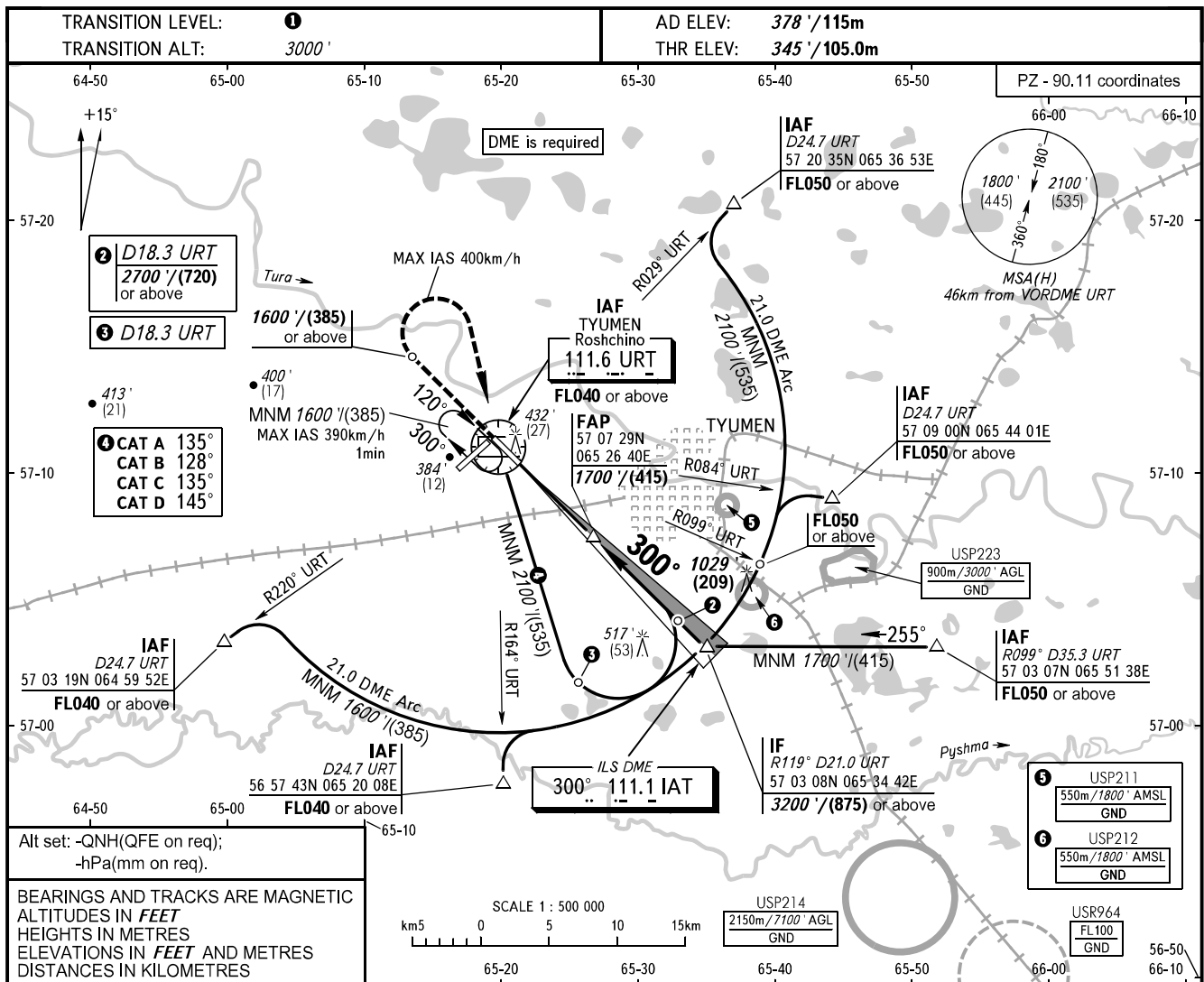


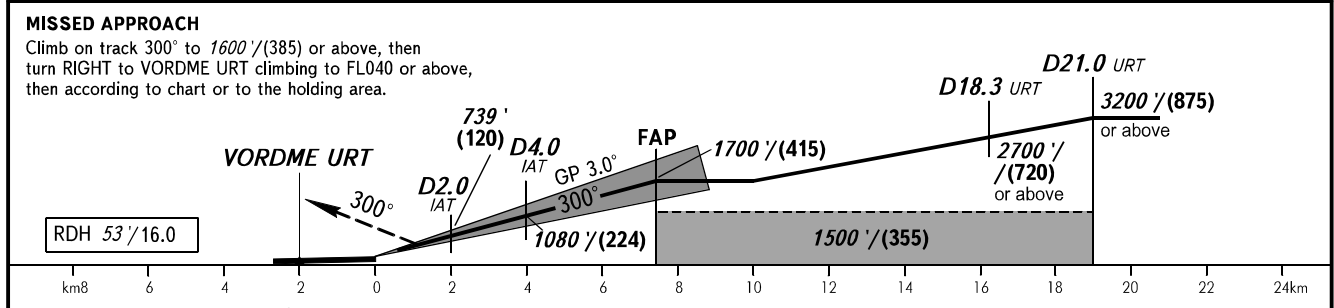
**INSTRUMENT  
APPROACH  
CHART - ICAO**

RADAR **126.100**  
START **118.200**

**TYUMEN, RUSSIA  
ROSHCHINO  
ILS Y CAT I RWY 30**



DME URT	2.0	4.0	6.0	7.0
ALTITUDE	739'	1080'	1421'	1593'



OCA(H)		A	B	C	D	<b>1</b> TRANSITION LEVEL: - FL040 when QNH is 1013 hPa (760mm mercury column) or above; - FL050 when QNH is 977 hPa (733mm mercury column) or above, but less than 1013 hPa (760mm mercury column); - FL060 when QNH is less than 977 hPa (733mm mercury column).  <b>WARNING</b> Zero range of DME IAT is indicated at RWY 30 THR.						
Straight-in Approach	CAT I	523' (178') (55)	535' (190') (58)	580' (235') (72)	592' (245') (76)							
	Circling	780' (410') (125)	870' (500') (150)	970' (600') (185)	1070' (690') (215)							
GROUND SPEED	km/h	150	180	210	240	270	300	330	360	390	420	450
RATE OF DESCENT	m/s	2.2	2.6	3.0	3.5	3.9	4.3	4.8	5.2	5.6	6.1	6.5
	ft/min	427	512	597	640	682	768	853	938	1024	1103	1182