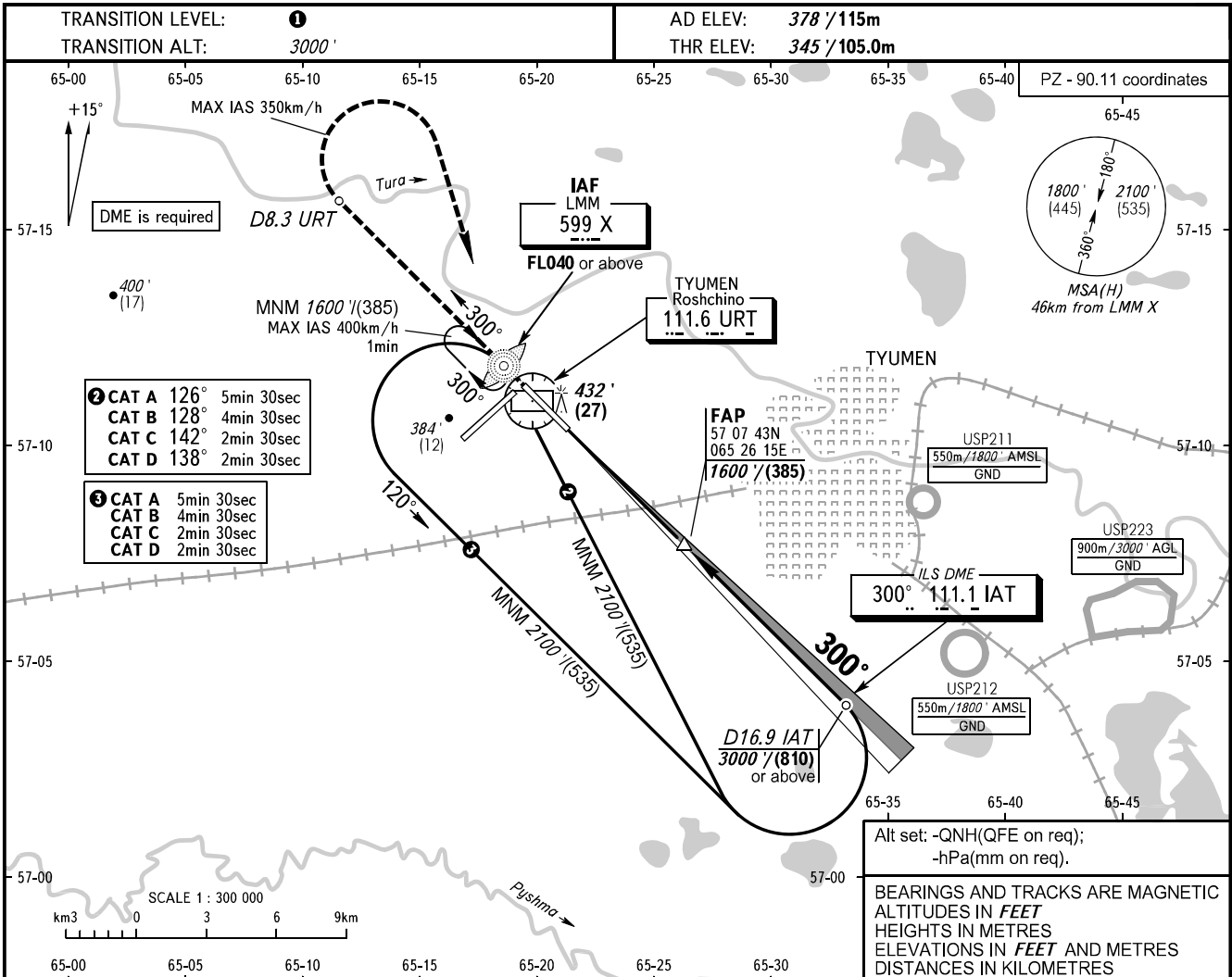


**INSTRUMENT  
APPROACH  
CHART - ICAO**

**TYUMEN, RUSSIA  
ROSHCHINO  
ILS X CAT I RWY 30**

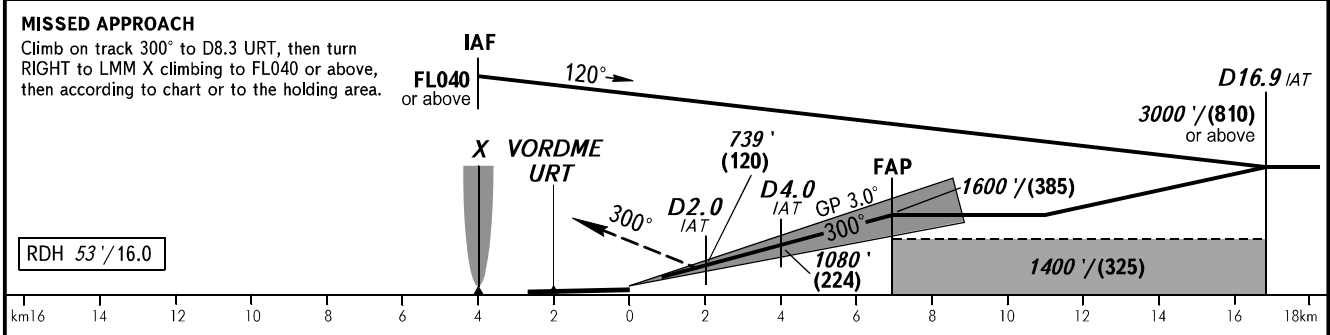
RADAR **126.100**  
START **118.200**



Alt set: -QNH(QFE on req);  
-hPa(mm on req).

BEARINGS AND TRACKS ARE MAGNETIC  
ALTITUDES IN FEET  
HEIGHTS IN METRES  
ELEVATIONS IN FEET AND METRES  
DISTANCES IN KILOMETRES

DME IAT	2.0	4.0	6.0	7.0
ALTITUDE	739'	1080'	1421'	1593'



OCA(H)		A	B	C	D	① TRANSITION LEVEL: - FL040 when QNH is 1013 hPa (760mm mercury column) or above; - FL050 when QNH is 977 hPa (733mm mercury column) or above, but less than 1013 hPa (760mm mercury column); - FL060 when QNH is less than 977 hPa (733mm mercury column).													
Straight-in Approach	CAT I	523' (178')	535' (190')	580' (235')	592' (245')	<b>WARNING</b> Zero range of DME IAT is indicated at RWY 30 THR.													
		(55)	(58)	(72)	(76)														
Circling		780' (410')	870' (500')	970' (600')	1070' (690')														
GROUND SPEED		km/h	150	180	210	240	270	300	330	360	390	420	450						
RATE OF DESCENT		m/s	2.2	2.6	3.0	3.5	3.9	4.3	4.8	5.2	5.6	6.1	6.5						
		ft/min	427	512	597	640	682	768	853	938	1024	1103	1182						