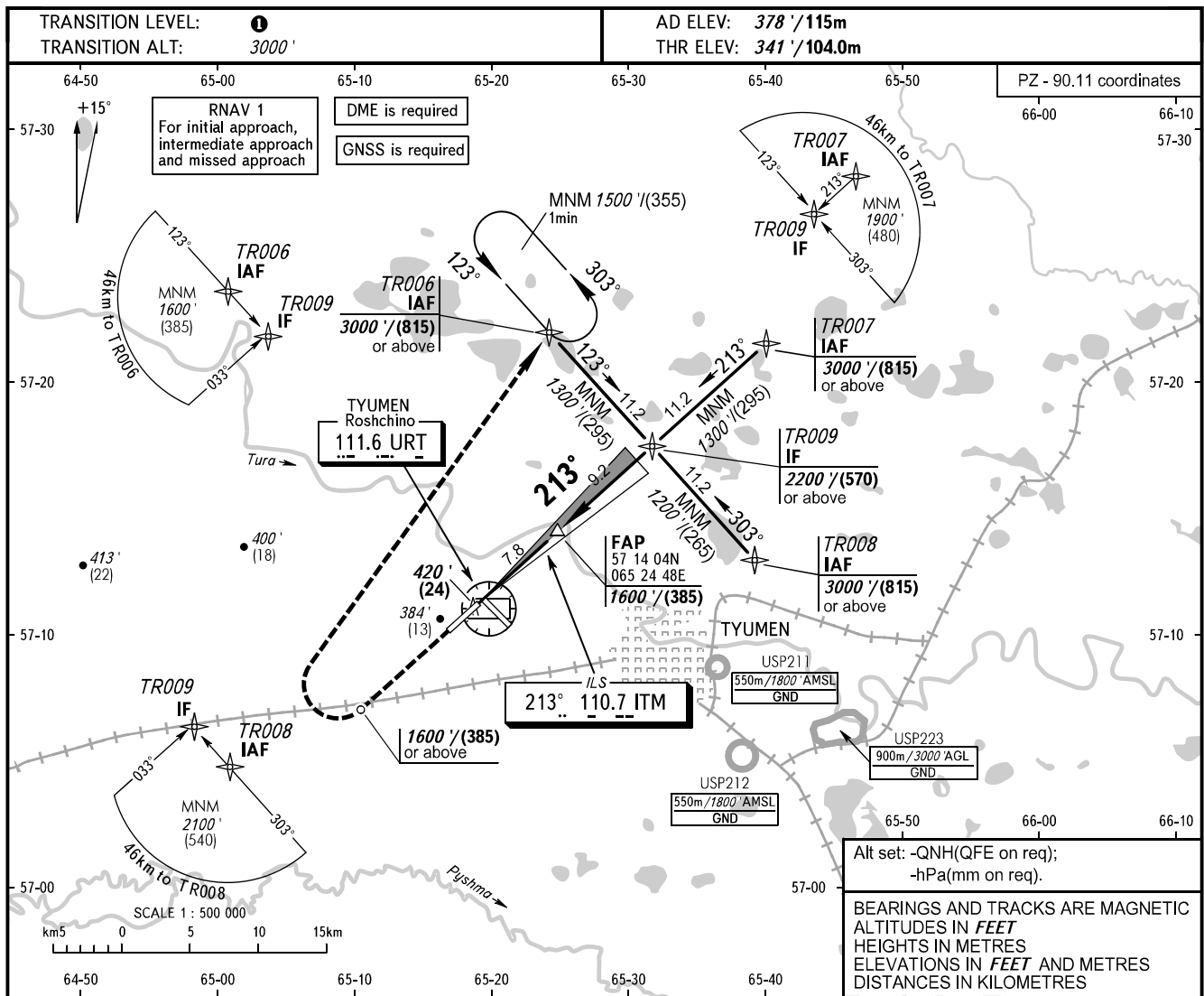


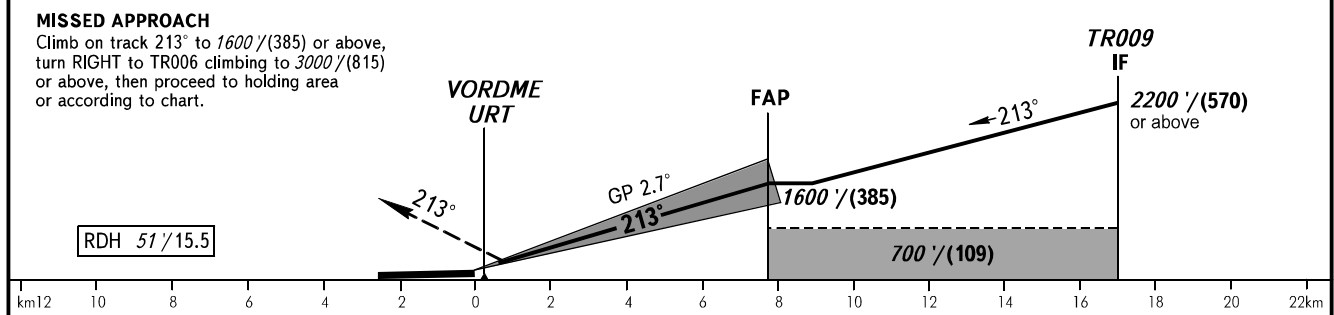
**INSTRUMENT
APPROACH
CHART - ICAO**

RADAR **126.100**
START **118.200**

TYUMEN, RUSSIA
ROSHCHINO
ILS Z CAT I RWY 21



DME URT	2.0	4.0	6.0	7.0
ALTITUDE	449'	891'	1319'	1533'



OCA(H)		A	B	C	D	TRANSITION LEVEL: - FL040 when QNH is 1013 hPa (760mm mercury column) or above; - FL050 when QNH is 977 hPa (733mm mercury column) or above, but less than 1013 hPa (760mm mercury column); - FL060 when QNH is less than 977 hPa (733mm mercury column).									
Straight-in Approach	CAT I	537' (196') (60)	549' (208') (64)	558' (217') (67)	567' (226') (69)										
	Circling	780' (410') (125)	870' (500') (150)	970' (600') (185)	1070' (690') (215)										
GROUND SPEED		km/h	150	180	210	240	270	300	330	360	390	420	450		
RATE OF DESCENT		m/s	2.0	2.4	2.7	3.1	3.5	3.9	4.3	4.7	5.1	5.5	5.9		
		ft/min	385	463	540	617	694	771	848	925	1002	1079	1156		