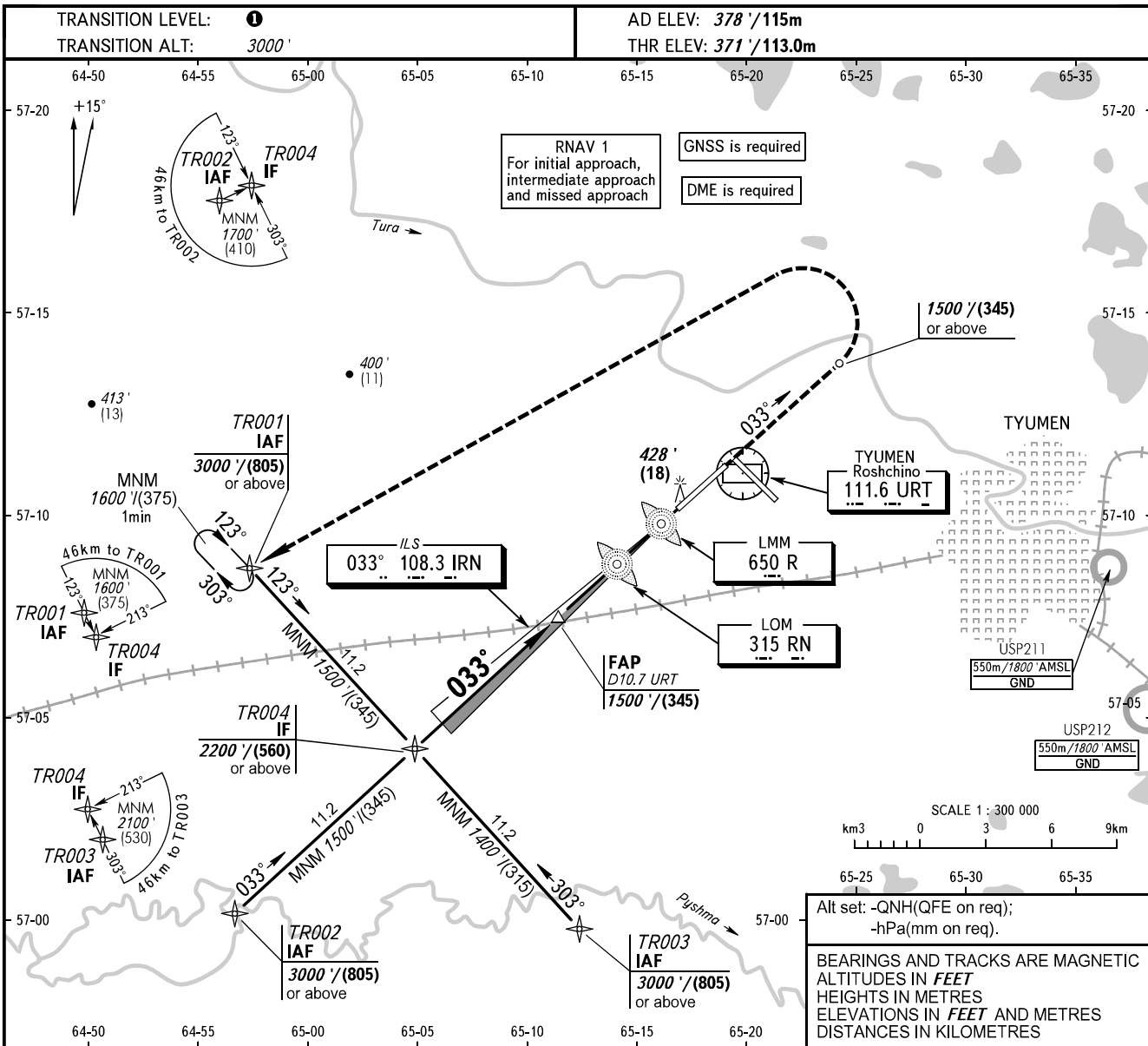


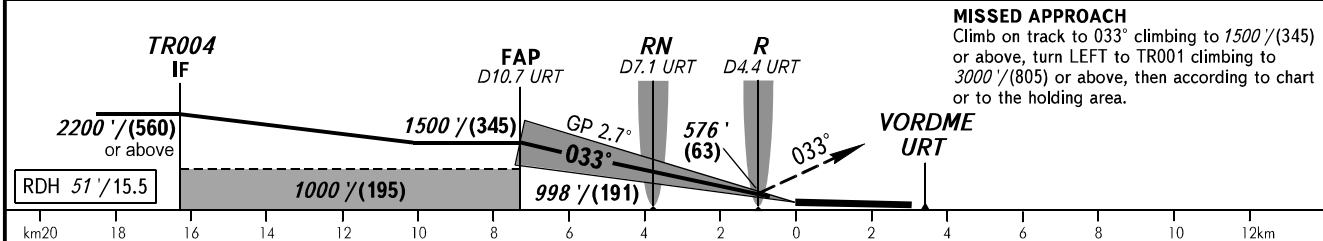
**INSTRUMENT
APPROACH
CHART - ICAO**

RADAR **126.100**
START **118.200**

**TYUMEN, RUSSIA
ROSHCHINO
ILS Z CAT I RWY 03**



DME URT	9.0	7.0	5.0
ALTITUDE	1311'	1020'	728'



OCA(H)		A	B	C	D	TRANSITION LEVEL: - FL040 when QNH is 1013 hPa (760mm mercury column) or above; - FL050 when QNH is 977 hPa (733mm mercury column) or above, but less than 1013 hPa (760mm mercury column); - FL060 when QNH is less than 977 hPa (733mm mercury column).						
Straight-in Approach	CAT I	558' (188') (58)	570' (200') (61)	578' (208') (64)	589' (219') (67)							
	Circling	780' (410') (125)	870' (500') (150)	970' (600') (185)	1070' (690') (215)							
GROUND SPEED	km/h	150	180	210	240	270	300	330	360	390	420	450
RATE OF DESCENT	m/s	2.0	2.4	2.7	3.1	3.5	3.9	4.3	4.7	5.1	5.5	5.9
	ft/min		385	463	540	617	694	771	848	925	1002	1079