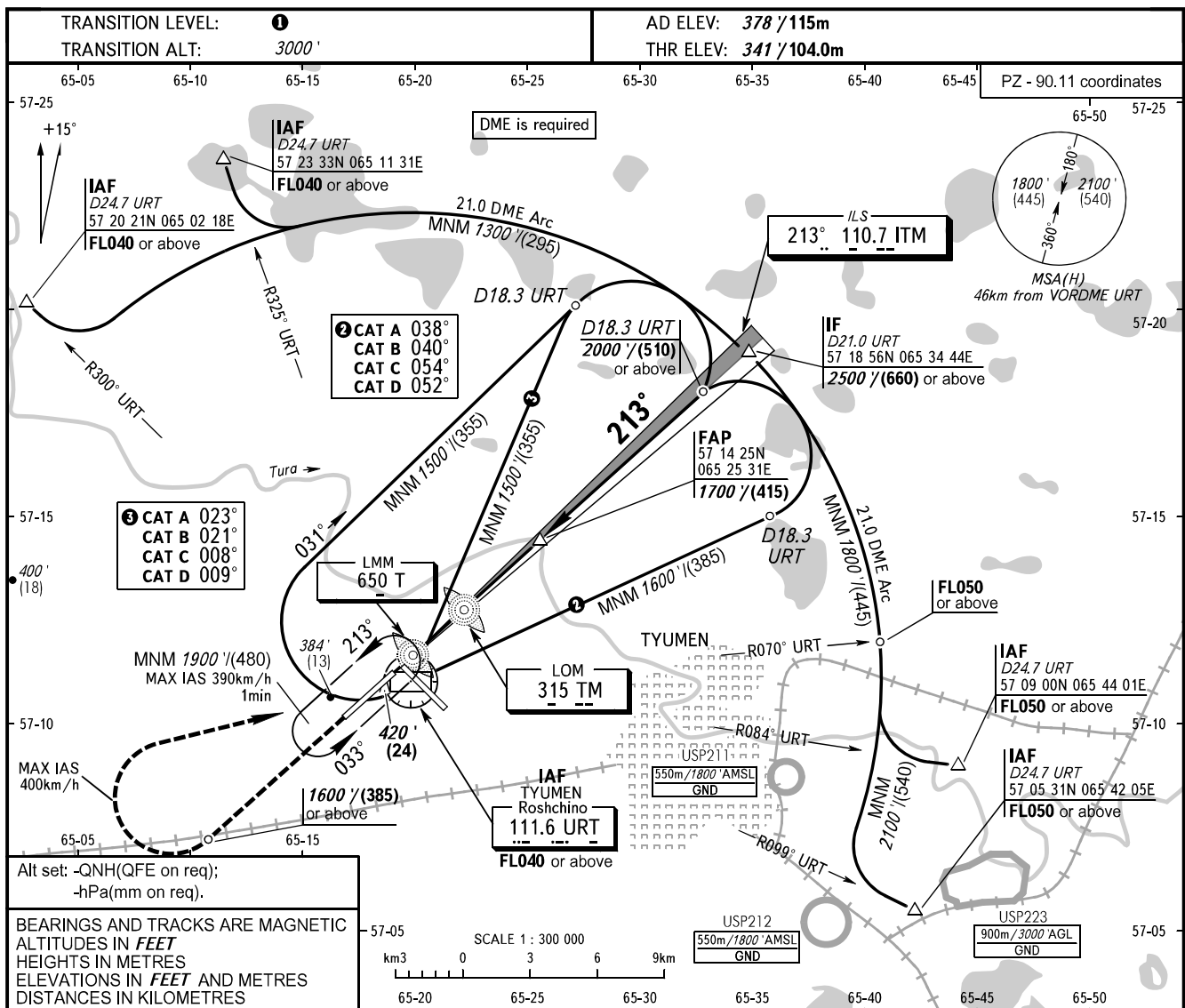


**INSTRUMENT  
APPROACH  
CHART - ICAO**

RADAR **126.100**  
START **118.200**

**TYUMEN, RUSSIA  
ROSHCHINO  
ILS Y CAT I RWY 21**



**MISSED APPROACH**  
Climb on track 213° to 1600' / (385) or above, then turn RIGHT to VORDME URT climbing to FL040 or above, then according to chart or to the holding area.

