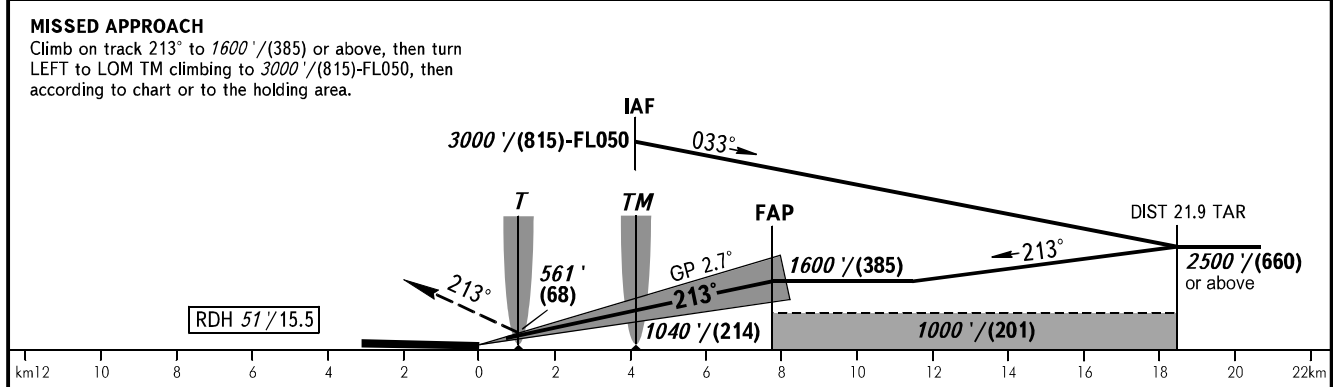
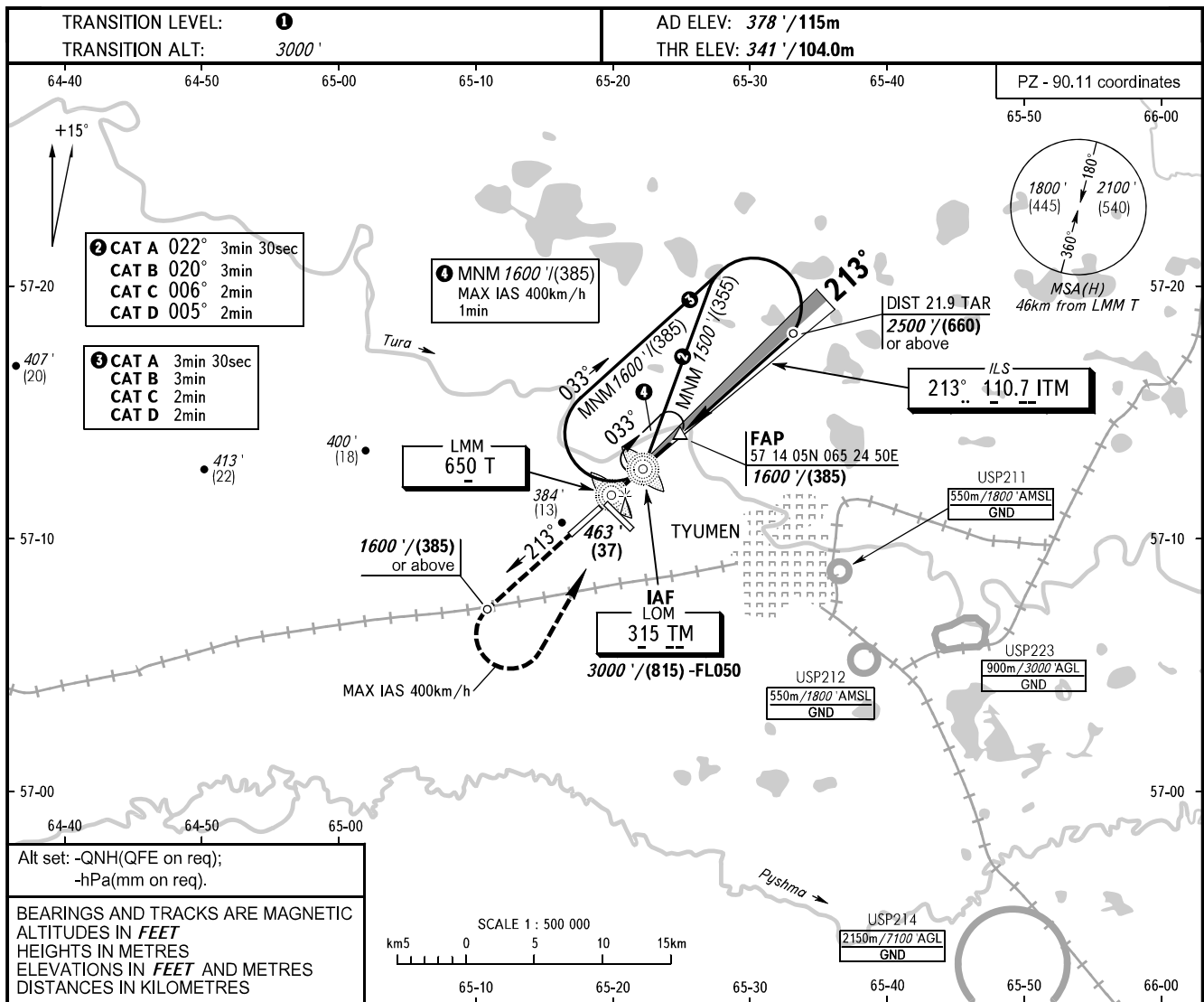


**INSTRUMENT
APPROACH
CHART - ICAO**

RADAR **126.100**
START **118.200**

TYUMEN, RUSSIA
ROSHCHINO
ILS X CAT I RWY 21



OCA(H)		A	B	C	D	① TRANSITION LEVEL: - FL040 when QNH is 1013 hPa (760mm mercury column) or above; - FL050 when QNH is 977 hPa (733mm mercury column) or above, but less than 1013 hPa (760mm mercury column); - FL060 when QNH is less than 977 hPa (733mm mercury column).							
Straight-in Approach	CAT I	537' (196') (60)	549' (208') (64)	558' (217') (67)	567' (226') (69)								
		Circling											780' (410') (125)
GROUND SPEED		km/h	150	180	210	240	270	300	330	360	390	420	450
RATE OF DESCENT		m/s	2.0	2.4	2.7	3.1	3.5	3.9	4.3	4.7	5.1	5.5	5.9
		ft/min	385	463	540	617	694	771	848	925	1002	1079	1156