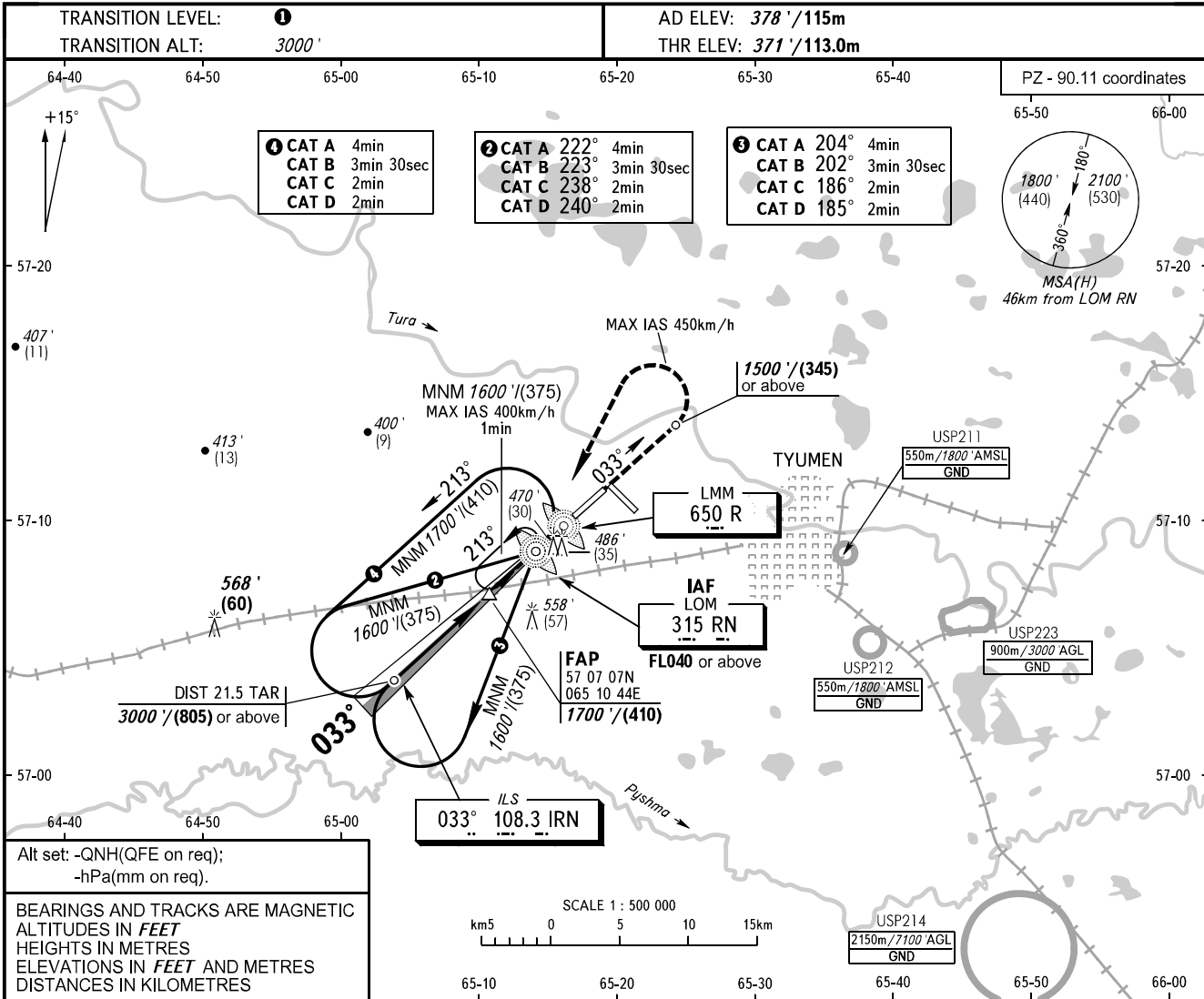


**INSTRUMENT
APPROACH
CHART - ICAO**

**TYUMEN, RUSSIA
ROSHCHINO
ILS X CAT I RWY 03**

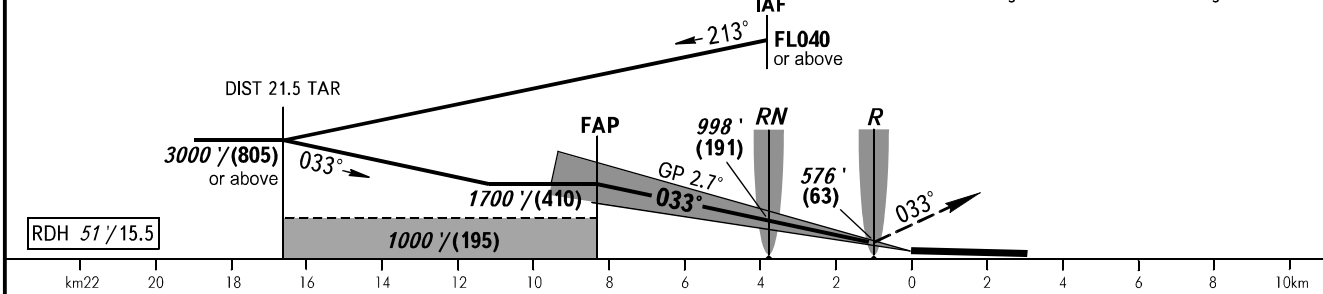
RADAR **126.100**
START **118.200**



Alt set: -QNH(QFE on req);
-hPa(mm on req).

BEARINGS AND TRACKS ARE MAGNETIC
ALTITUDES IN **FEET**
HEIGHTS IN METRES
ELEVATIONS IN **FEET** AND METRES
DISTANCES IN KILOMETRES

MISSED APPROACH
Climb on track 033° to 1500' (345) or above, then turn LEFT to LOM RN climbing to FL040 or above, then according to chart or to the holding area.



OCA(H)		A	B	C	D
Straight-in Approach	CAT I	558' (188')	570' (200')	578' (208')	589' (219')
		(58)	(61)	(64)	(67)
Circling		780' (410')	870' (500')	970' (600')	1070' (690')
		(125)	(150)	(185)	(215)

① TRANSITION LEVEL:
- FL040 when QNH is 1013 hPa (760mm mercury column) or above;
- FL050 when QNH is 977 hPa (733mm mercury column) or above, but less than 1013 hPa (760mm mercury column);
- FL060 when QNH is less than 977 hPa (733mm mercury column).

GROUND SPEED	km/h	150	180	210	240	270	300	330	360	390	420	450
RATE OF DESCENT	m/s	2.0	2.4	2.7	3.1	3.5	3.9	4.3	4.7	5.1	5.5	5.9
	ft/min	385	463	540	617	694	771	848	925	1002	1079	1156

CHANGE: Heading