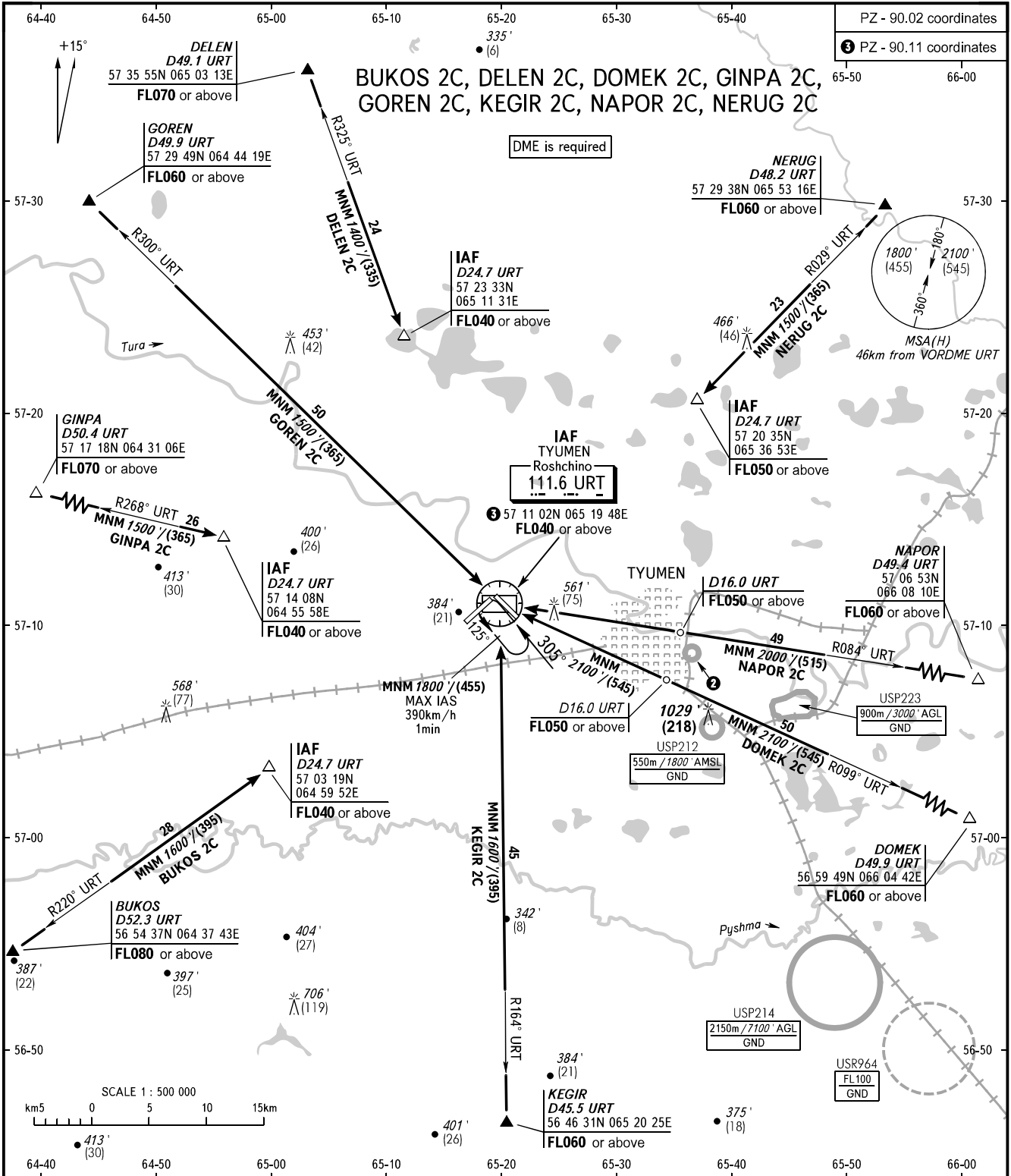


STANDARD ARRIVAL CHART
INSTRUMENT (STAR) - ICAO

TYUMEN, RUSSIA
ROSHCHINO
RWY 12

TRANSITION
LEVEL : ①



PZ - 90.02 coordinates
② PZ - 90.11 coordinates

DME is required

IAF TYUMEN Roshchino 111.6 URT
③ 57 11 02N 065 19 48E
FL040 or above

MSA(H) 46km from VORDME URT
1800' (455)
2100' (545)
360'

NAPOR D49.4 URT
57 06 53N 066 08 10E
FL060 or above

USP223
900m / 3000' AGL
GND

USP212
550m / 1800' AMSL
GND

USP214
2150m / 7100' AGL
GND

USR964
FL100
GND

- ① TRANSITION LEVEL:
- FL040 when QNH is 1013 hPa (760mm mercury column) or above;
 - FL050 when QNH is 977 hPa (733mm mercury column) or above, but less than 1013 hPa (760mm mercury column);
 - FL060 when QNH is less than 977 hPa (733mm mercury column).

② USP211
550m / 1800' AMSL
GND

RADAR 126.100
START 118.200

BEARINGS AND TRACKS ARE MAGNETIC
ALTITUDES IN FEET
HEIGHTS IN METRES
ELEVATION IN FEET AND METRES
DISTANCES IN KILOMETRES

Alt set: -QNH(QFE on req);
-hPa(mm on req).

CHANGE: Heading