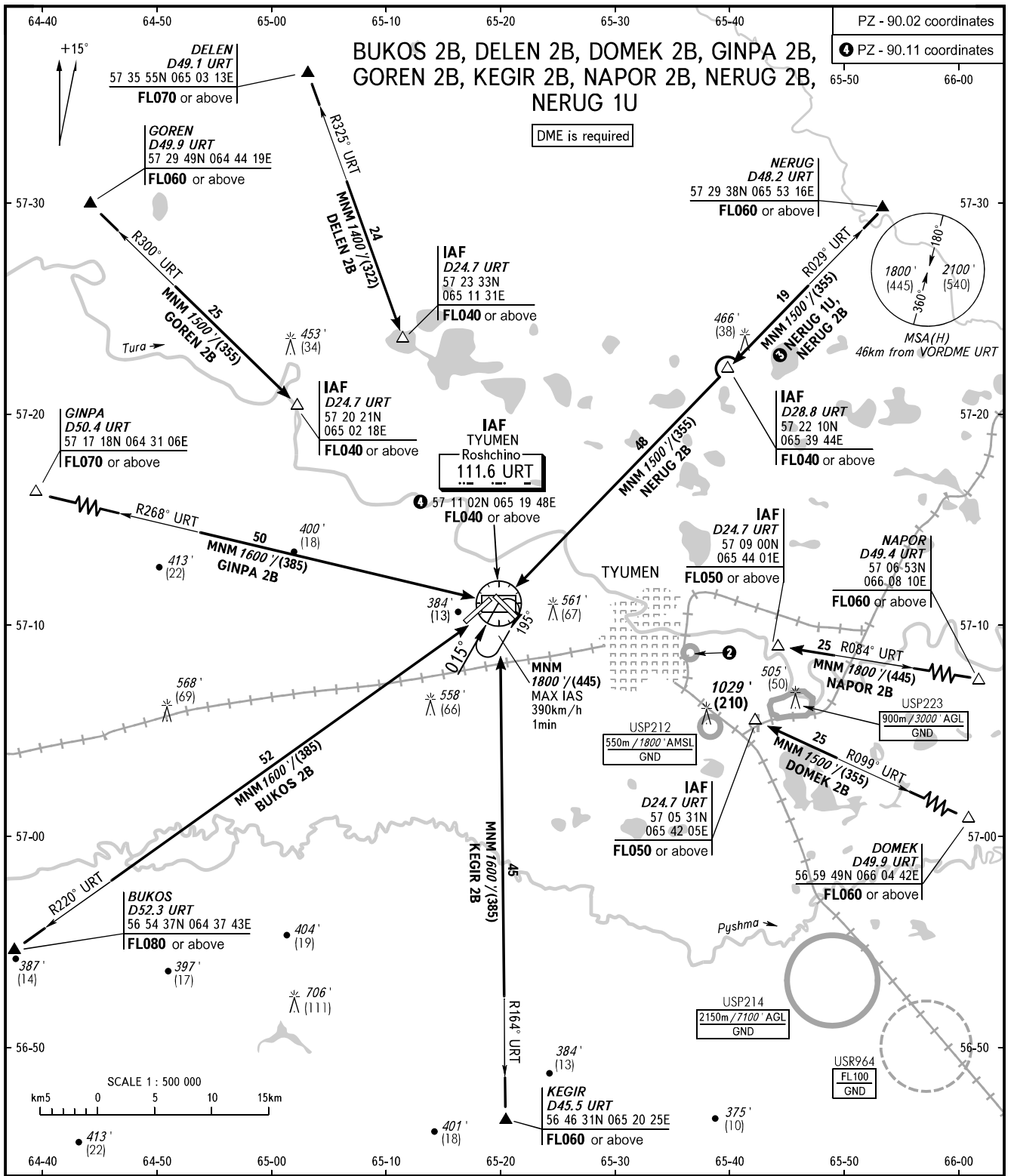


STANDARD ARRIVAL CHART  
INSTRUMENT (STAR) - ICAO

TYUMEN, RUSSIA  
ROSHCHINO  
RWY 21

TRANSITION  
LEVEL : ①



RADAR 126.100  
START 118.200

① TRANSITION LEVEL:  
- FL040 when QNH is 1013 hPa (760mm mercury column) or above;  
- FL050 when QNH is 977 hPa (733mm mercury column) or above, but less than 1013 hPa (760mm mercury column);  
- FL060 when QNH is less than 977 hPa (733mm mercury column).

② USP211  
550m / 1800' AMSL  
GND

NOTE  
③ STAR NERUG 1U is AVBL for VORDME approach.

BEARINGS AND TRACKS ARE MAGNETIC  
ALTITUDES IN FEET  
HEIGHTS IN METRES  
ELEVATION IN FEET AND METRES  
DISTANCES IN KILOMETRES

Alt set: -QNH(QFE on req);  
-hPa(mm on req).