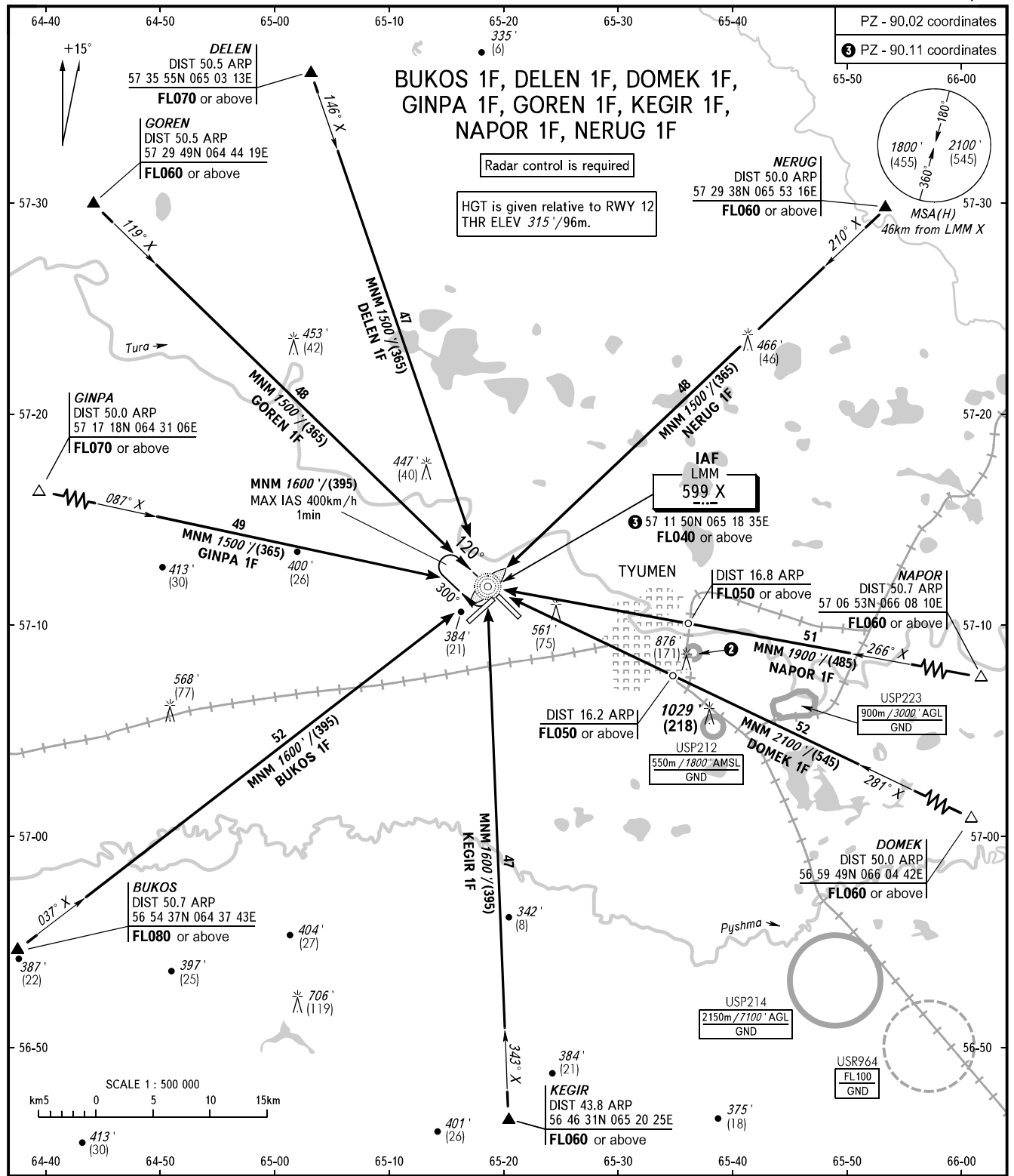


STANDARD ARRIVAL CHART
INSTRUMENT (STAR) - ICAO

TYUMEN, RUSSIA
ROSHCHINO
RWY 12/30

TRANSITION
LEVEL : **1**



RADAR
START **126.100**
118.200

1 TRANSITION LEVEL:
- FL040 when QNH is 1013 hPa (760mm mercury column) or above;
- FL050 when QNH is 977 hPa (733mm mercury column) or above,
but less than 1013 hPa (760mm mercury column);
- FL060 when QNH is less than 977 hPa (733mm mercury column).

2 USP211
550m / 1800' AMSL
GND

BEARINGS AND TRACKS ARE MAGNETIC ALTITUDES IN FEET HEIGHTS IN METRES ELEVATION IN FEET AND METRES DISTANCES IN KILOMETRES	Alt set: -QNH(QFE on req); -hPa(mm on req).
---	--

CHANGE: Heading