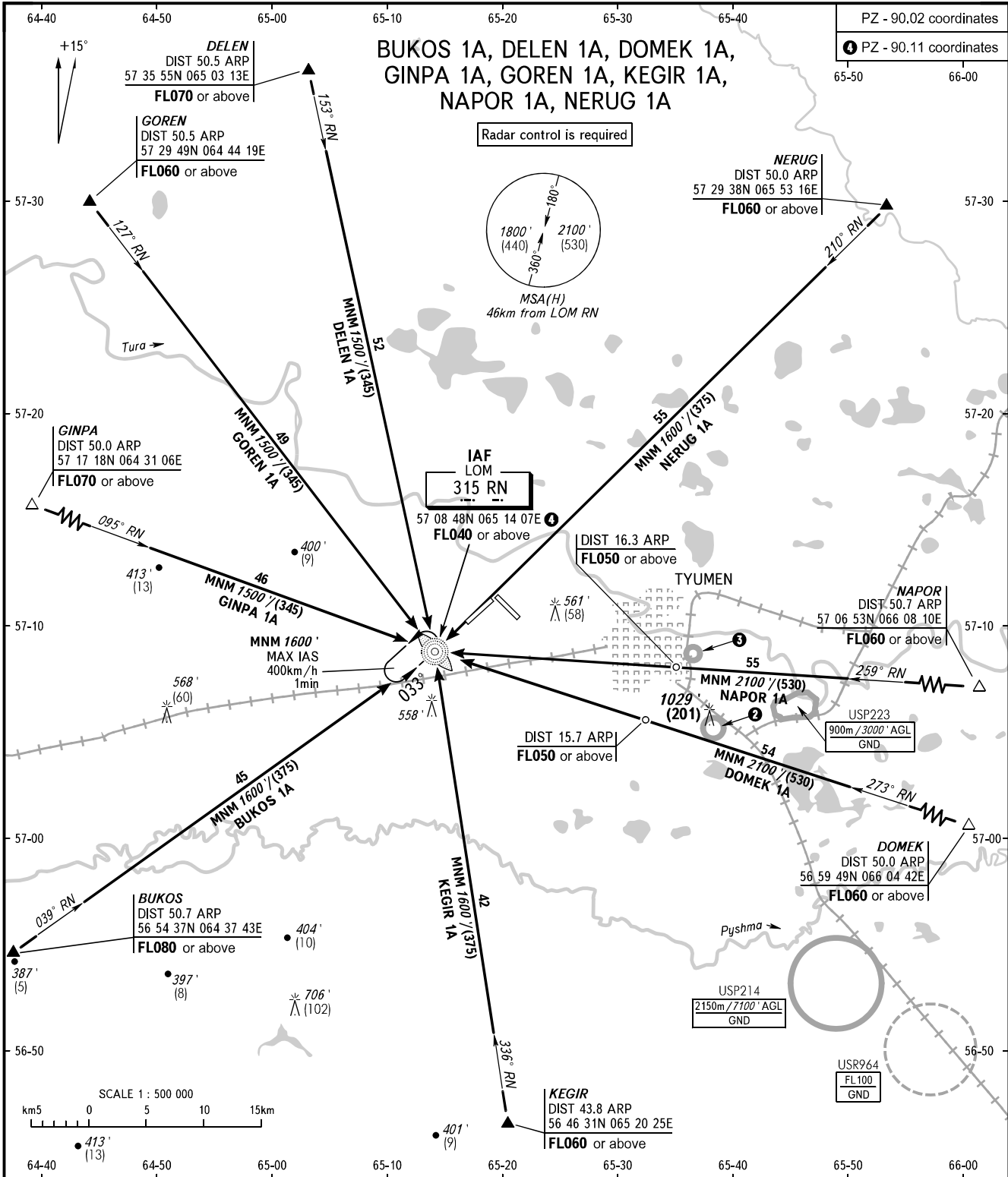


STANDARD ARRIVAL CHART
INSTRUMENT (STAR) - ICAO

TYUMEN, RUSSIA
ROSHCHINO
RWY 03

TRANSITION
LEVEL : ①



RADAR 126.100
START 118.200

- ① TRANSITION LEVEL:
- FL040 when QNH is 1013 hPa (760mm mercury column) or above;
 - FL050 when QNH is 977 hPa (733mm mercury column) or above, but less than 1013 hPa (760mm mercury column);
 - FL060 when QNH is less than 977 hPa (733mm mercury column).

BEARINGS AND TRACKS ARE MAGNETIC
ALTITUDES IN FEET
HEIGHTS IN METRES
ELEVATION IN FEET AND METRES
DISTANCES IN KILOMETRES

Alt set: -QNH(QFE on req);
-hPa(mm on req).

CHANGE: NIL